

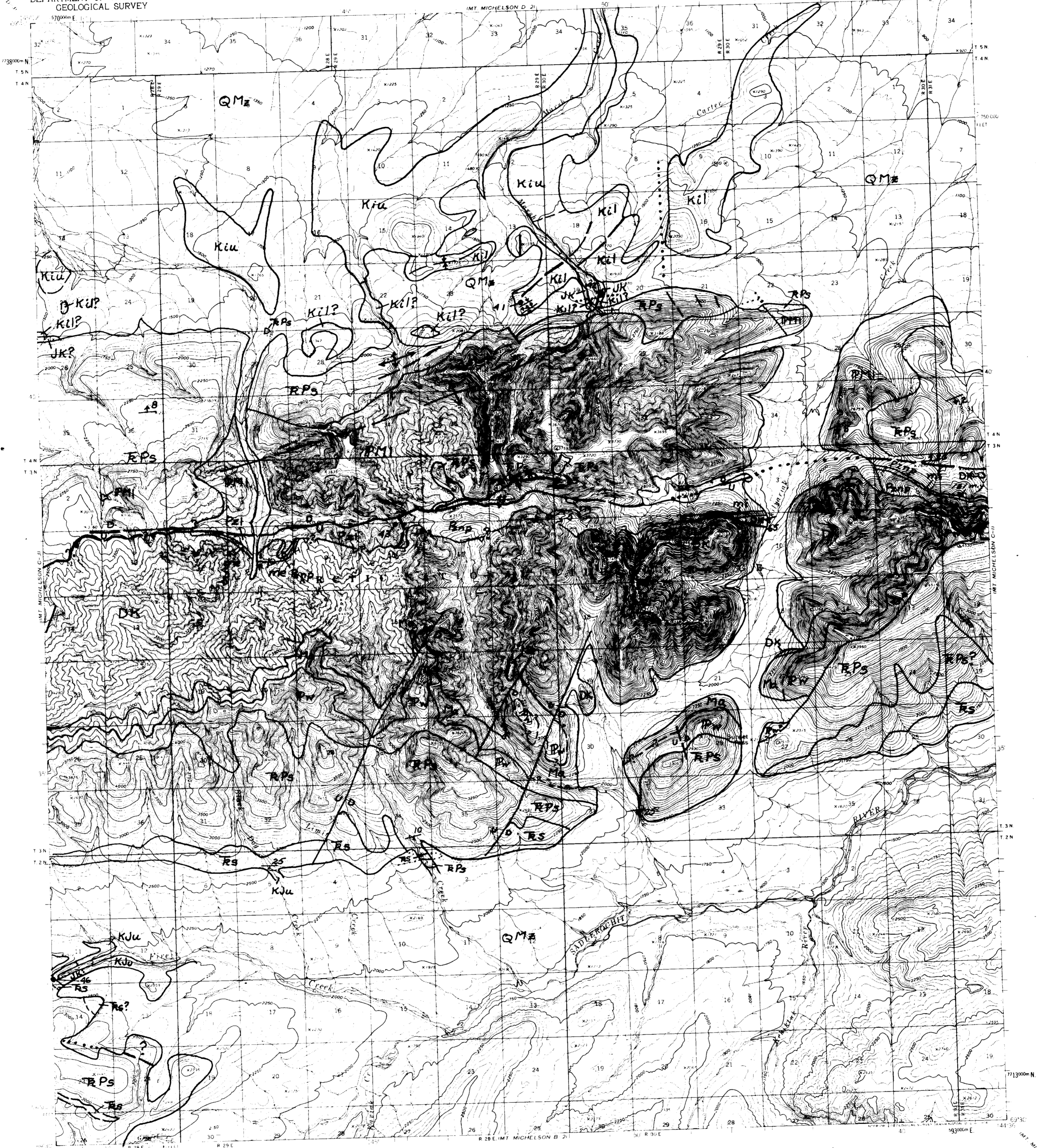
U.S. GEOLOGICAL SURVEY
OPEN FILE MAP

GEOPHYSICAL INSTITUTE LIBRARY
UNIVERSITY OF ALASKA

MT. MICHELSON (C-2) QUADRANGLE
ALASKA
1:63,360 SERIES (TOPOGRAPHIC)

Report
QE
75
065
No. 70-273

UNITED STATES
DEPARTMENT OF THE INTERIOR
GEOLOGICAL SURVEY



Map and the Area Map Series
Topographic maps of the United States
are published by the Geological Survey
as part of the Open File Map Series
Topographic maps are published from
aerial photographs taken from
high altitude balloons. Maps are
checked and corrected to show
changes in the terrain since the
1950 survey. Maps are published
in accordance with the standards
of the U.S. Geological Survey
and the U.S. Army Corps of
Engineers. Maps are published
as part of the Open File Map
Series. Maps are published in
conformance with the standards
of the U.S. Geological Survey
and the U.S. Army Corps of
Engineers.

FOR SALE BY U.S. GEOLOGICAL SURVEY
FAIRBANKS, ALASKA DENVER 25, COLORADO WASHINGTON 25, D.C.
A FOLDER DESCRIBING TOPOGRAPHIC MAPS AND SYMBOLS IS AVAILABLE ON REQUEST

MT. MICHELSON (C-2), ALASKA
1955
ADVANCE PROOF
SUBJECT TO CORRECTION

THIS MAP IS PRELIMINARY AND
HAS NOT BEEN FIELD OR REVIEW
ED FOR CONSISTENCY WITH U.S.
GEOLOGICAL SURVEY STANDARDS
AND NOMENCLATURE