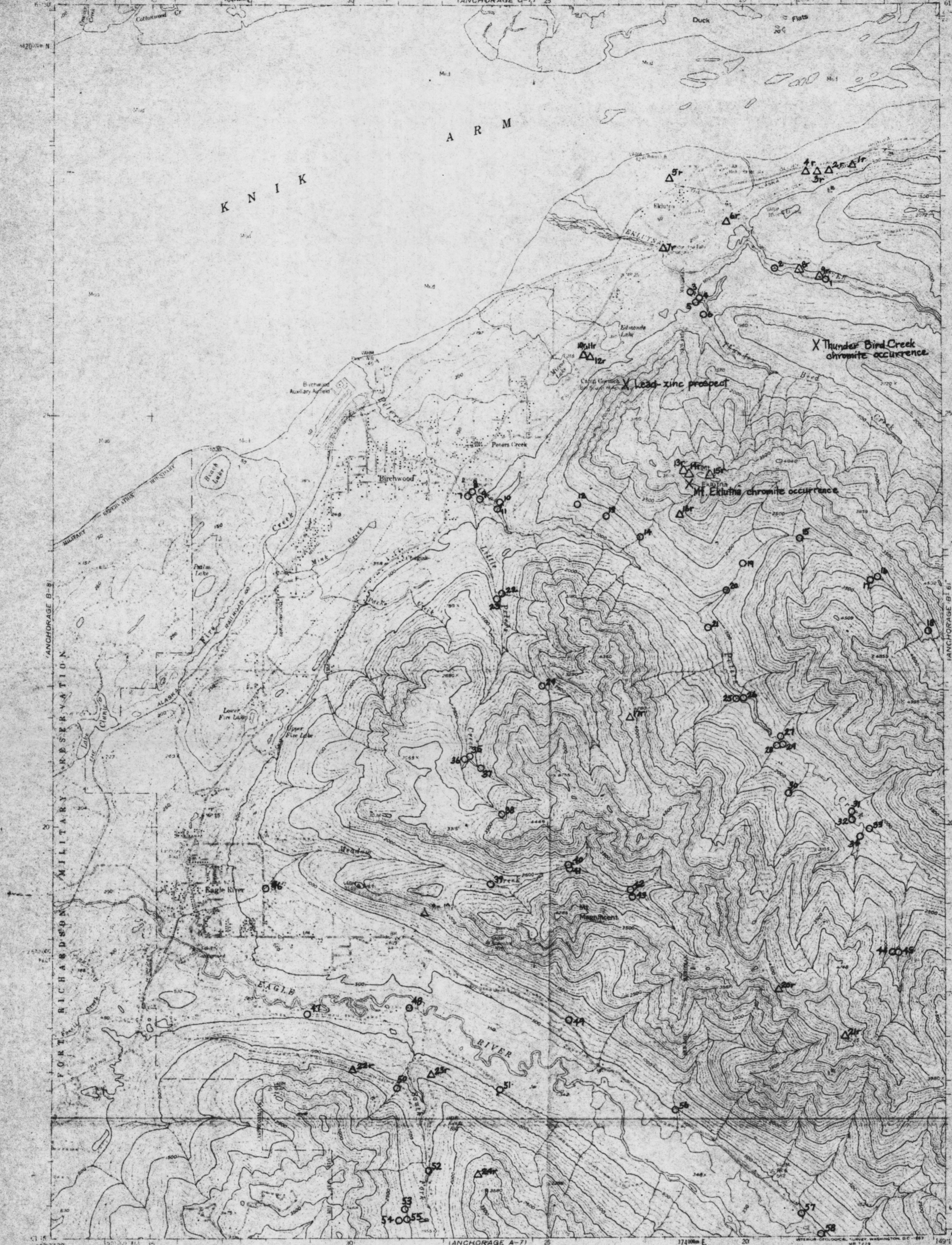


(200)
R290
no. 1588

OPEN-FILE REPORT

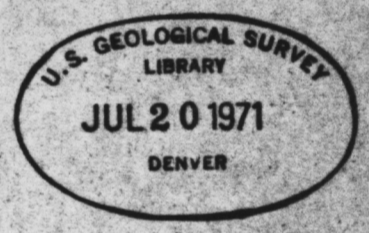
UNITED STATES
DEPARTMENT OF THE INTERIOR
GEOLOGICAL SURVEY

ANCHORAGE (B-7) QUADRANGLE
ALASKA
1:62,500 SERIES (TOPOGRAPHIC)



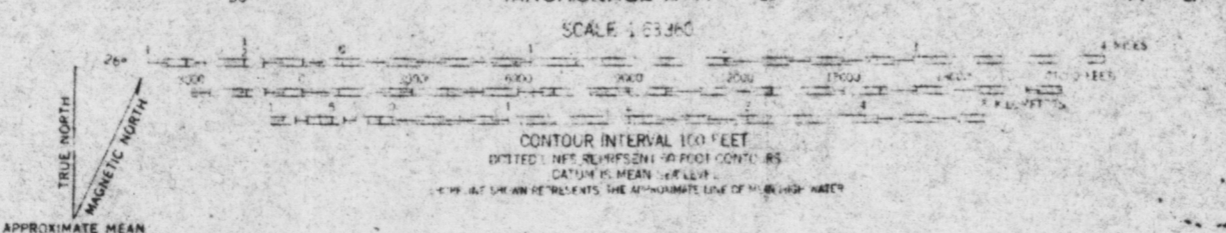
Explanation

- /b Location and map number of stream-sediment sample; analyses given in Table 2
- △/br Location and map number of rock sample; analyses given in Table 3
- X Location of mineral occurrences



This map is preliminary and has not been edited or reviewed for conformity with U.S. Geological Survey standards and nomenclature.

Mapped, edited, and published by the Geological Survey
Control by USGS and USCE
Topography by photogrammetric methods from aerial photographs taken 1950, 1953 and 1957; field annotated 1960. Map not land checked
Selected hydrographic data compiled from USGS Chart 5553 (1:62,500 scale 1960). This information is not intended for navigational purposes.
Universal Transverse Mercator projection; 1927 North American datum
10,000 foot grid based on Alaska coordinate system, zone 4
1000 foot interval Transverse Mercator grid ticks, zone 6, shown in blue
Land lines omitted in gray represent unreviewed and unmarked localities predetermined by the Bureau of Land Management, Fiyon 5-13 and 5-14; Seward Meridian
Seeps, as portrayed, indicate only the wetter areas, mostly of low relief, as interpreted from aerial photographs



ANCHORAGE (B-7), ALASKA
N61.52-W149.15/15X22.5
1960
HIGH RESOLUTION

FOR SALE BY U.S. GEOLOGICAL SURVEY
FAIRBANKS ALASKA DENVER 25, COLORADO WASHINGTON 25, D.C.
A FOLDER DESCRIBING TOPOGRAPHIC MAPS AND SYMBOLS IS AVAILABLE ON REQUEST

Figure 2. Location of stream-sediment and rock samples, Anchorage B-7 quadrangle, Alaska.

PLEASE RETURN TO POCKET IN BACK OF SURVEY VOLUME