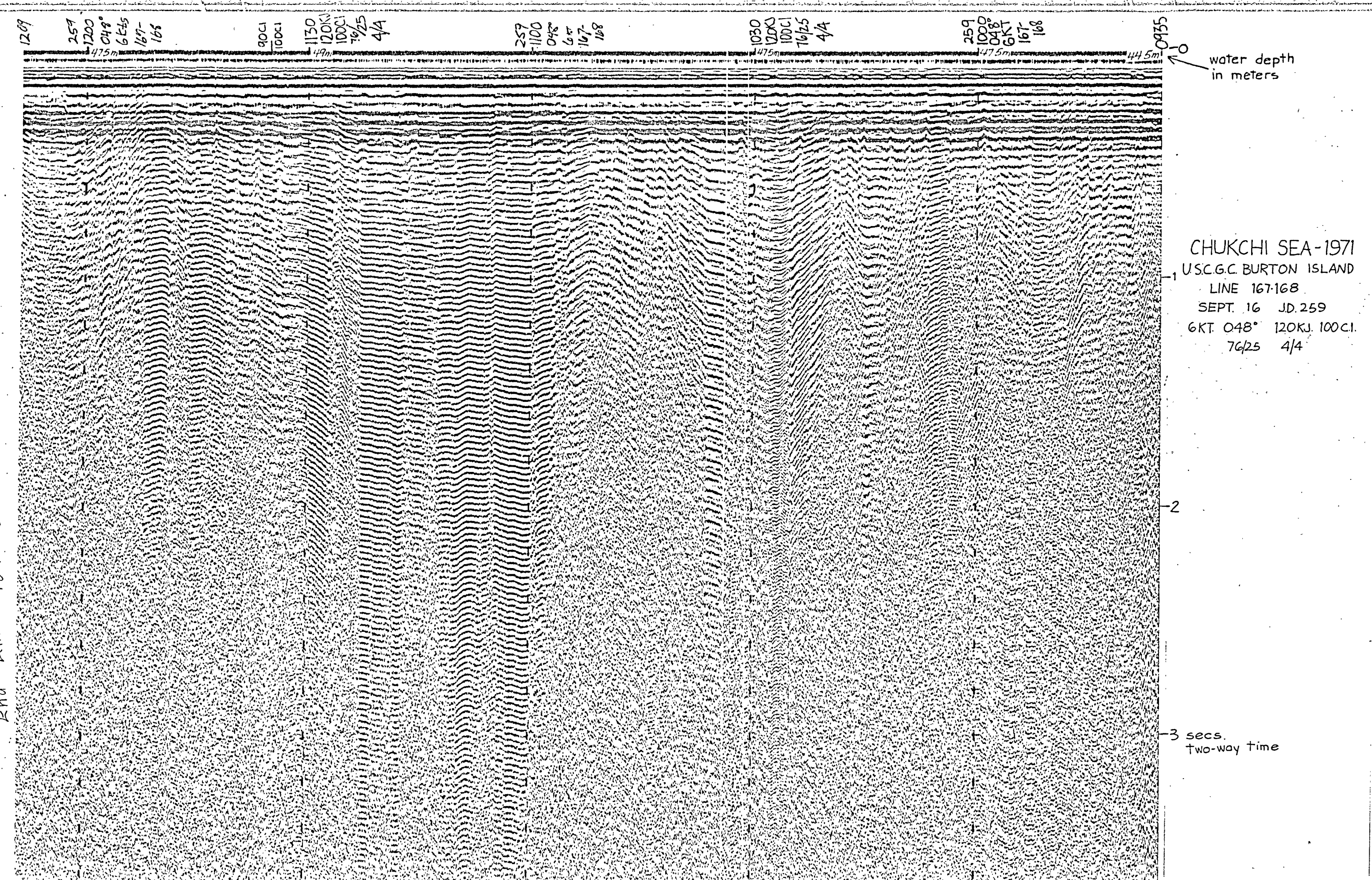
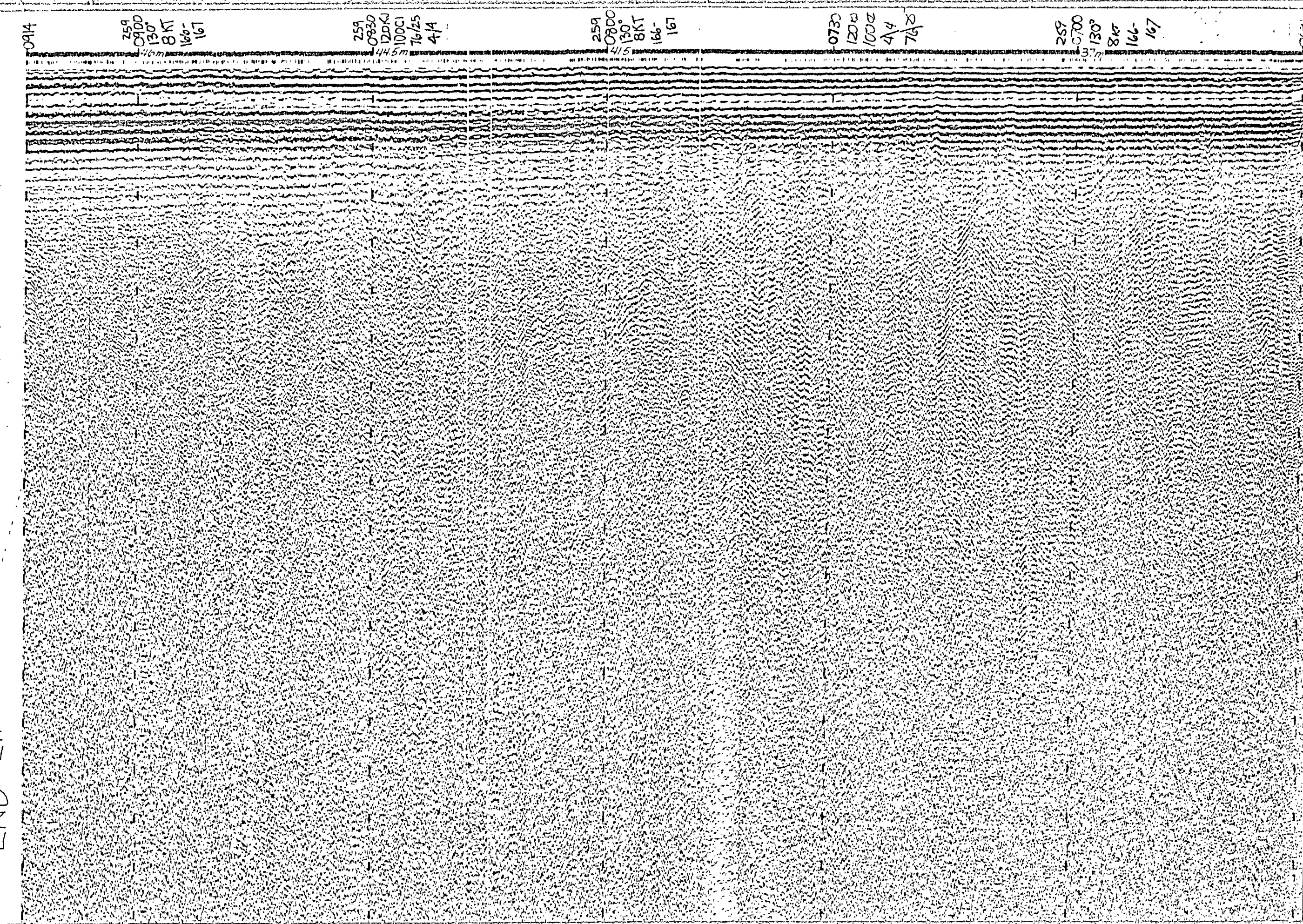


End Line 167-168



END LINE 166-167



U.S. GEOLOGICAL SURVEY
166-167, 167-168
DATE & TIME (ALASKA DAYLIGHT TIME)
Sept 16 0630-1209
(JD. 259)
COURSE (GEOGRAPHS FROM TRUE NORTH)
0630-0914: 130°
0935-1209: 048°

FILED (KNOTS)
0630-0914: 8kt
0935-1209: 6kt

WIND RATE (SECONDS)
4

Copy is PUBLIC PROPERTY and is not
to be removed from the official files: 4

PRIVATE POSSESSION IS UNLAWFUL
(R. S. Sup. Vol. 2 pp. 530, Sec. 749)

PROPERTY OF
PUBLIC INQUIRY OFFICE
U. S. GEOLOGICAL SURVEY
ANCHORAGE, ALASKA

0630-1135: 120/100
1135-1209: 120/100

FILTER SETTINGS (HIGH & LOW LIMITS IN HERTZ)
76/25

Profile released without editorial and technical
review for conformity to Geological Survey standards.

#507

U.S. GEOLOGICAL SURVEY, ALASKA DIVISION, ANCHORAGE, ALASKA