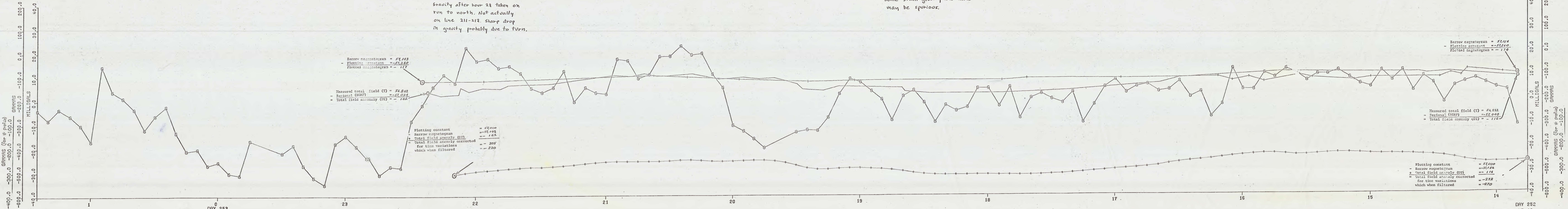


Some small gravity anomalies
may be spurious.



Gravity after hour 23 taken on
run to north. Not actually
on line 211-212. Sharp drop
in gravity probably due to turn.

DAY 253
HR 1
MIN 25.00
T-IGRF S-AT-57260 + FILT MAG + FREE AIR ANOM G

DAY 252
HR 13
MIN 45.30

#