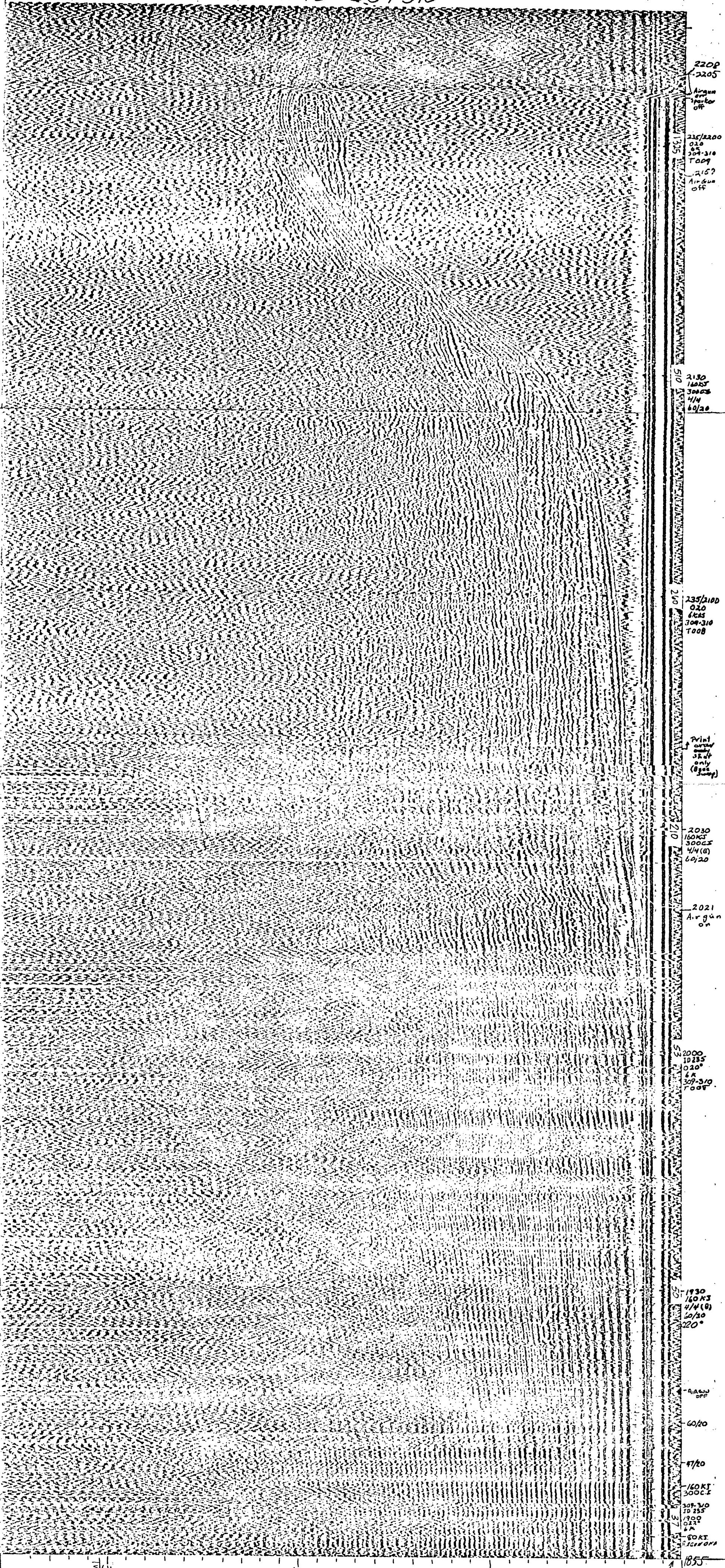


END 309-310



2200
2205
Air gun
off

215/2200
020
020
209-310
T009
2157
Air gun
off

2130
160KT
300CT
10/30
60/20

235/2100
020
020
209-310
T008

Print
only
(1974)

2030
160KT
300CT
10/30
60/20

2021
Air gun
off

2000
020
020
209-310
008

1930
160KT
10/30
220°

AIRGUN
OFF

60/20

47/20

160 KT
300 CT
10/30
60/20

1855
0

WATER DEPTH
IN METERS

3 SEC.
TWO-WAY TIME

309-310
DATE & TIME (LOCAL OUTLIER TIME)
AUG 23 (LD 235) 1895-2208

CORNER (DISTANCE FROM THE NORTH)
1855-1920 020°
1920-1930 022°
1930-2209 020°

SPREAD (LENGTH)
6.472

SOURCE RATE (SECONDS)
4
THE RATE (SECONDS)
4

POWER (RELATIVE) (INCHES OF AIR)
1855-1920 160/300
1920-1930 50/0
1930-1945 160/300
1945-1970 160/300
1970-2208 160/300
2208-2209 160/300

FILTER SETTINGS (HIGH & LOW LIMITS IN HERTZ)
1855-1920 40/50
1920-1945 47/20
1945-2208 40/20

Profile released without editorial and technical review for conformity to Geological Survey standards.

(200)
R998
no. 1944