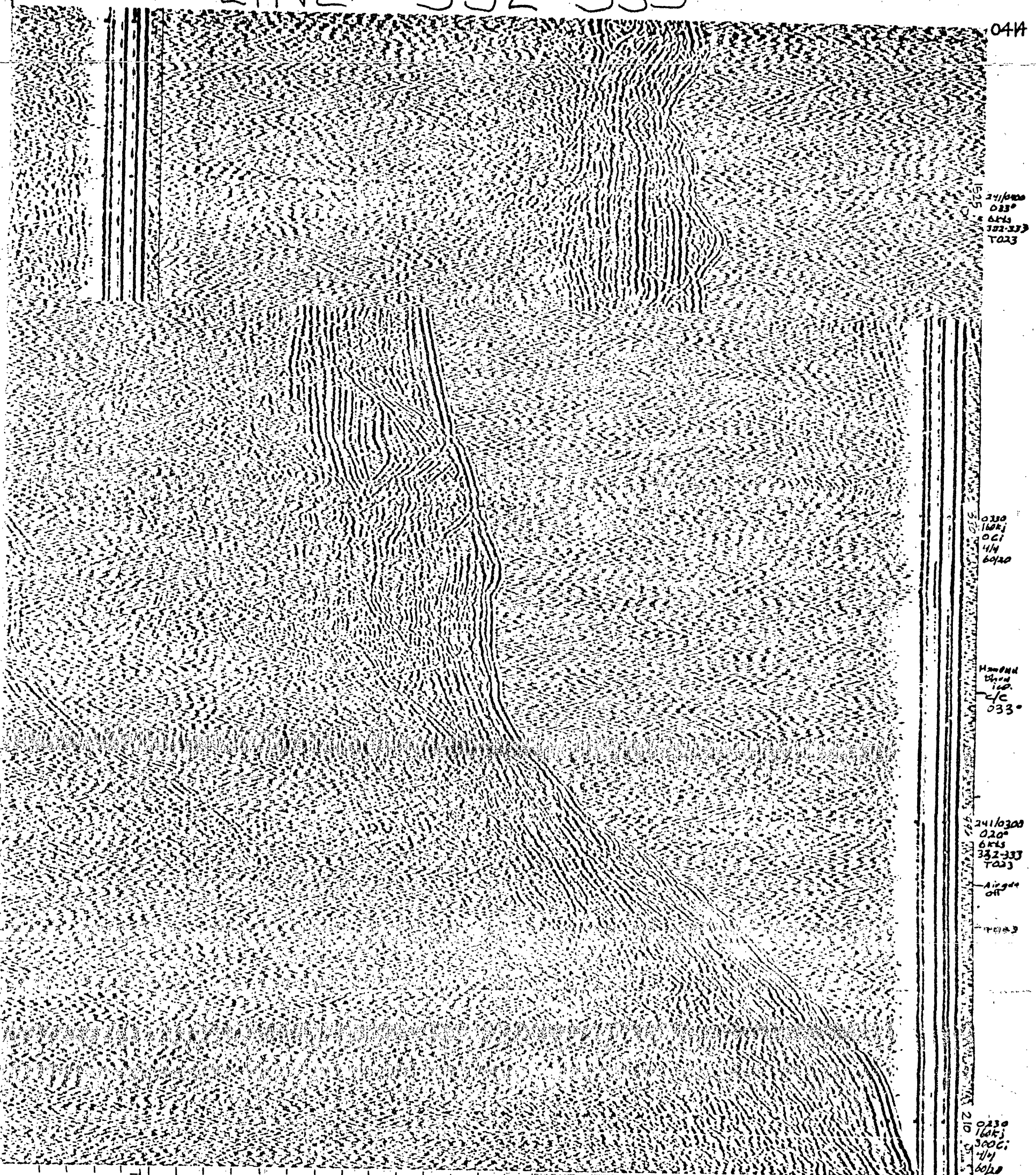


END LINE 332-333



0414

241/0300
0220°
6545
332-333
T023

0230
1603
021
114
6040

440004
160
C/C
033°

241/0300
0220°
6545
332-333
T023

0230
1603
021
114
6040

0 WATER DEPTH IN METERS

1

2

3 SEC. TWO-WAY TIME

LIC
332-333
DATE & TIME (ALASKA STANDARD TIME)
AUG 29 (10 24) 0225-5414
COURSE (DEGREES FROM TRUE NORTH)
0225-0314 020°
0314-0414 033° Monowahing in ice

SPEED (KNOTS)
6 kn

SLEEP RATE (SECONDS)
4 sec
FILE RATE (SECONDS)
4 sec
POWER (GAINABLE/COIL INCHES OF AIR)
0225-0250 160/300
250-0414 160/0

FILTER SETTINGS (GAIN & LOW LIMITS IN HERTZ)
60/20

Profile released without editorial and technical review for conformity to Geological Survey standards.