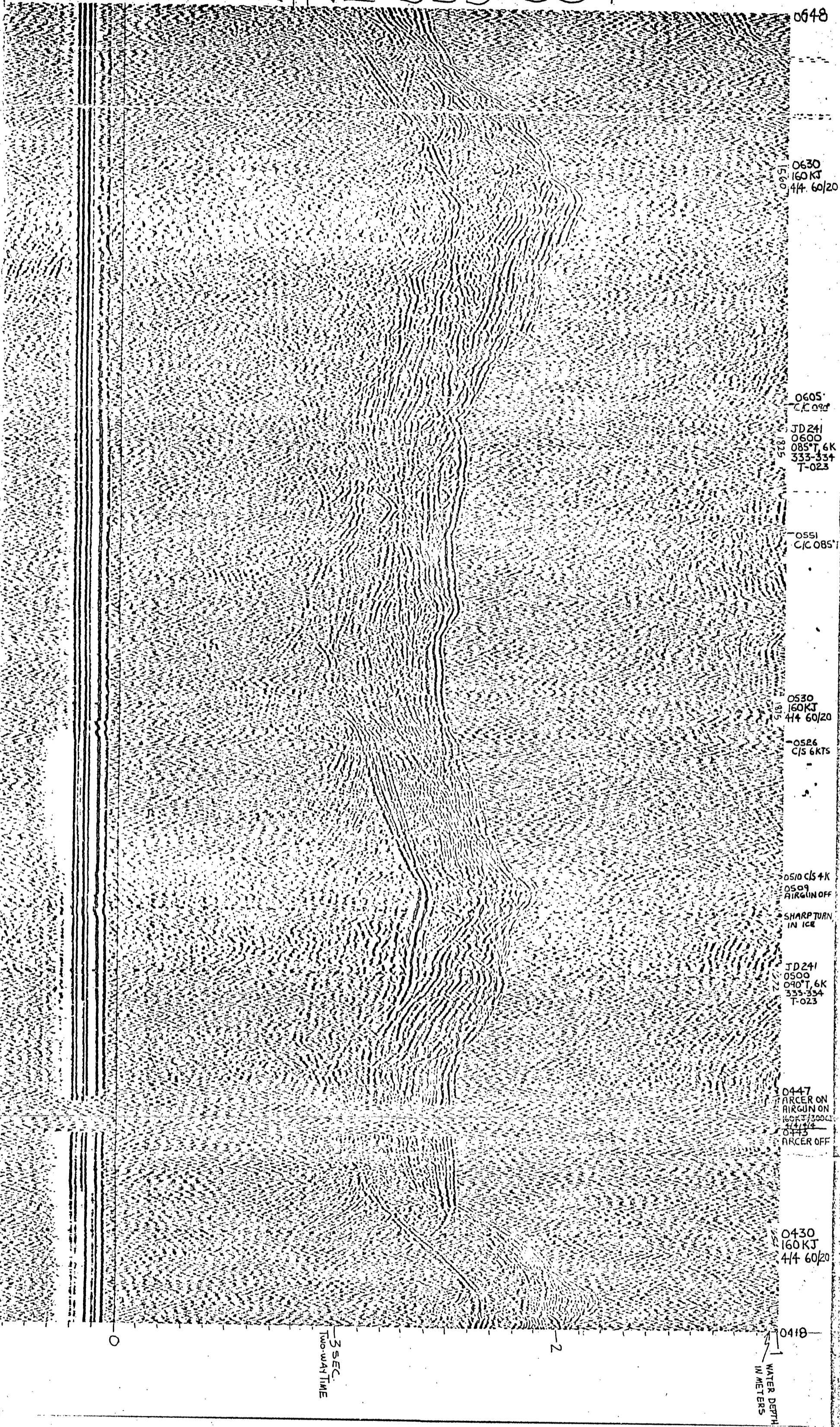


END LINE 333-334



LOG

333-334
DATE & TIME (ALASKA STANDARD TIME)

AUG 29 (JD 241) 0419-0648

CORRECT (DEGREES FROM TRUE NORTH)

0419-0551 090° Some monitoring in ice
0551-0605 085°
0605-0648 090°

SPEED (KNOTS)
0419-0510 6 kn
0510-0526 4 kn
0526-0648 6 kn

SHEEP LAIR (SECONDS)

4 Sec

FINE LAIR (SECONDS)

4 Sec

POWER (HILDALES/DEIC INCHES OF AIR)

0419-0443 161/0
0443-0509 160/500
0509-0648 160/5

FILTER SETTINGS (HIGH & LOW LIMITS IN HERTZ)

60/20

Profile released without editorial and technical review for conformity to Geological Survey standards.