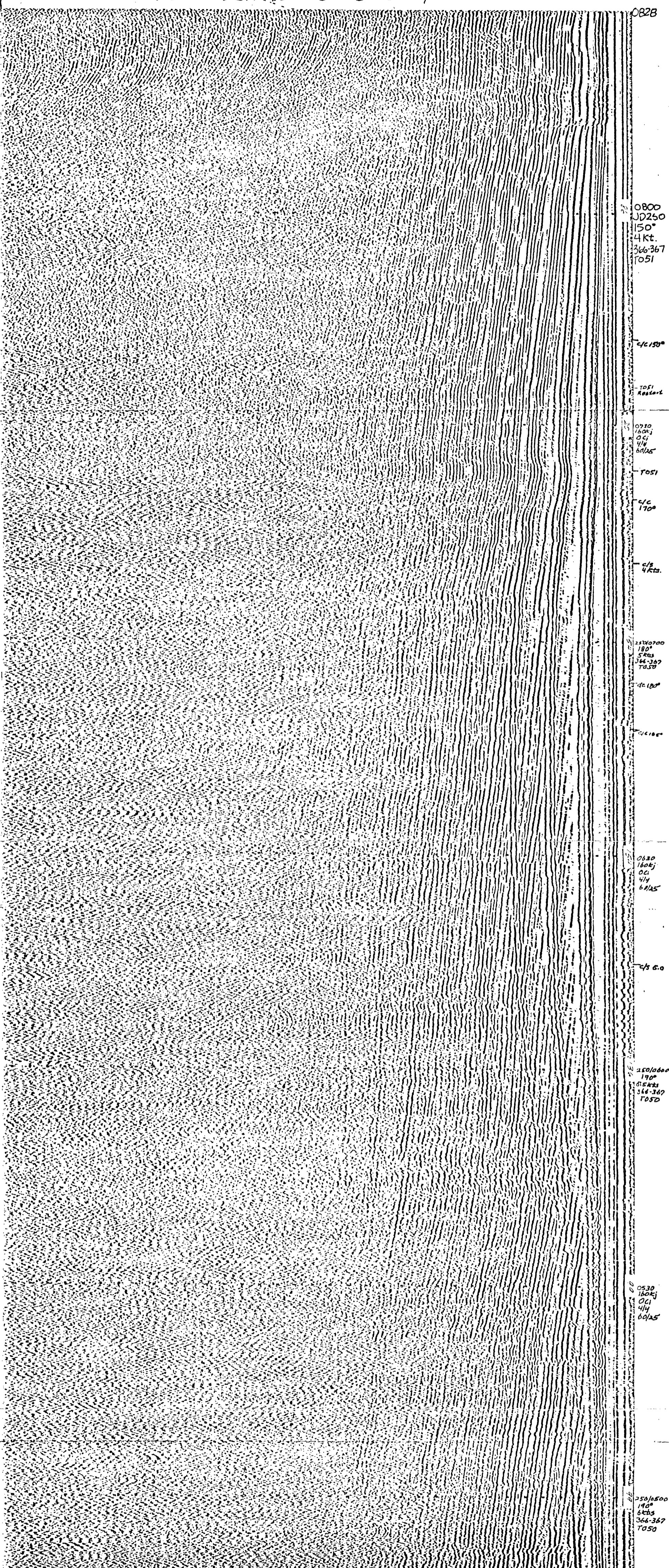


END LINE 366-367



0828
 0800
 JD260
 150°
 4 Kt.
 366-367
 TOSI

150°
 TOSI
 Residual

0720
 160k
 061
 4/4
 60/25
 TOSI

170°
 4 Kt.

180°
 5 Kts
 366-367
 TOSI

180°

0630
 160k
 061
 4/4
 60/25

190°
 6.5 Kts
 366-367
 TOSI

0530
 160k
 061
 4/4
 60/25

250/0500
 190°
 6.5 Kts
 366-367
 TOSI

0449

0 WATER DEPTH IN METERS
 1
 2
 3 SEC TWO-WAY TIME

366-367
 DATE TIME (LOCAL SOLAR TIME)
 SEPT 7 (JD250) 0449-0828

CORRECT DISTANCES FROM THIS POINT

0449-0841	190°
0648-0654	185°
0654-0720	180°
0720-0742	170°
0742-0828	150°

SPEED (KNOTS)

0449-0648	6 kn
0648-0711	5 kn
0711-0828	4 kn

SHEEP RATE (SECONDS)

4 Sec.

FILE RATE (SECONDS)

4 Sec.

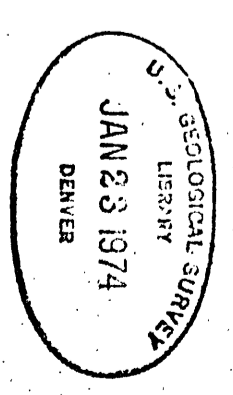
RASTER (MAGNETIC/GRID HEADING OF AIR)

100°

FILTER SETTINGS (COLOR & LOW LIGHTS IS BEST)

60/25

Profile released without editorial and technical review for conformity to Geological Society standards.



(200)
 R290
 no. 1944