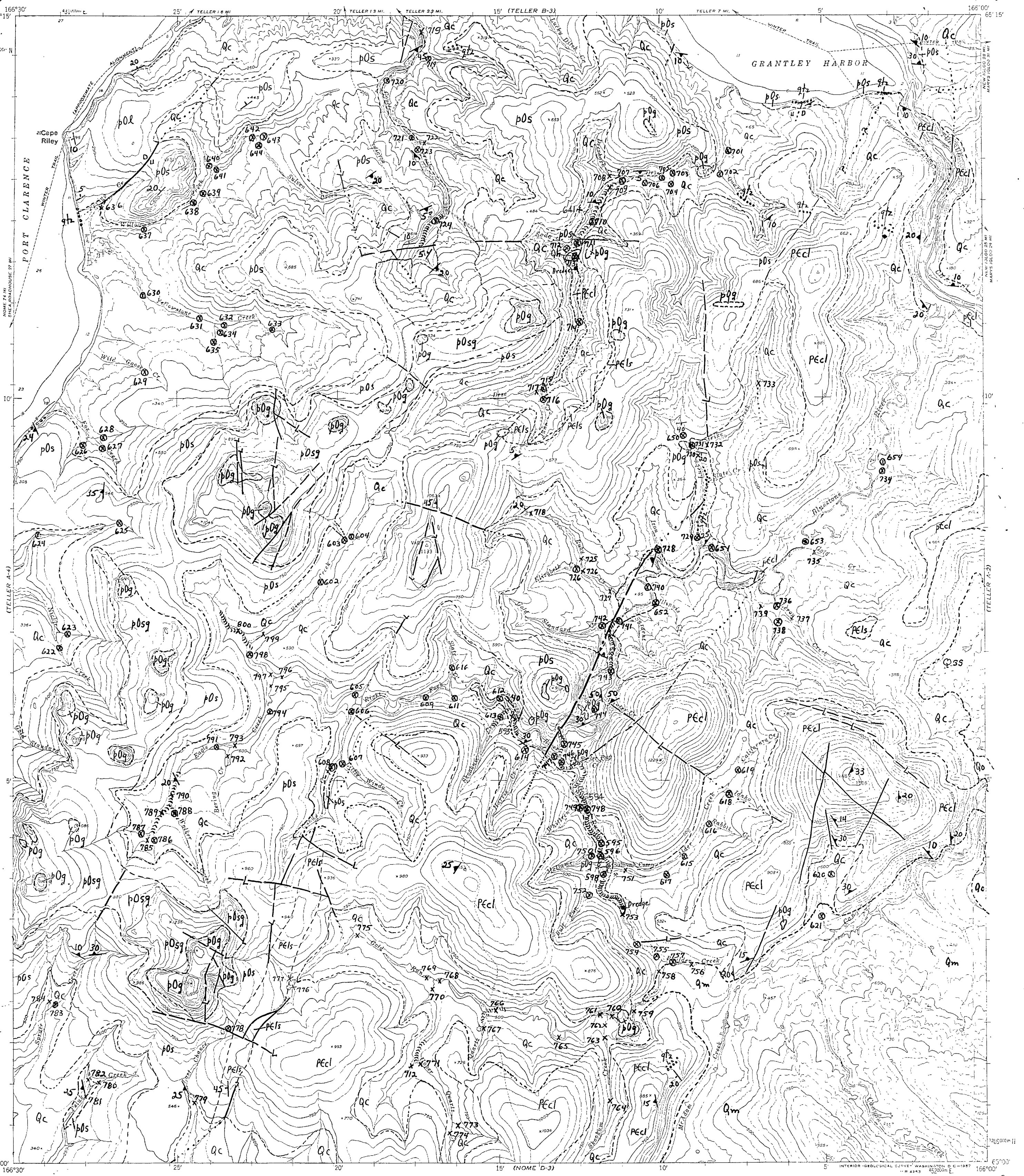


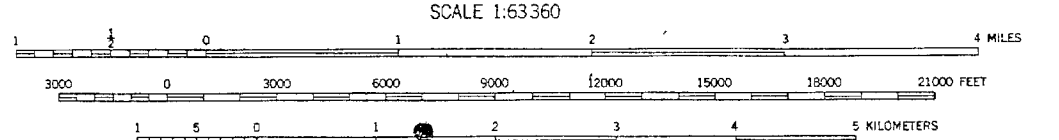
UNITED STATES
DEPARTMENT OF THE INTERIOR

EXPLANATION

Sancamon Wisconsinan	Qc	Cover Tundra shown where it completely mantles bedrock	Holocene
	Qh	Hot springs deposits	
	Qm	Moraine	Pleistocene
Qo	Outwash		
Nome Group	Qss	Silt and sand Stratified deposits related to base level changes	QUATERNARY
	pOl	Limestone Thin-bedded, rhythmically interbedded dolomitic limestone and argillaceous limestone	
	pOg	Gabbro Includes coarse-grained gabbro diabase, and altered equivalents which locally are garnet-glaucophane rocks	
Precambrian	pOs pOsg	Graphitic siltite "Slate of the York Region" pOs - Slightly to moderately metamorphosed graphitic siltite, slate, graywacke, and calcareous siltite pOsg - Green-weathering, chloritic pOs near mafic intrusives	PRECAMBRIAN
	pEcl pEls	Chloritic schists pEcl - Chlorite-hornblende-epidote schists, intensely deformed, locally graphitic; retrograded blueschist facies rocks pEls - Intercalated dark schistose limestone	
	qtz	Abundant quartz float	
	Placer mine tailings		
	Contact	Dashed where gradational, approximately located, or inferred; dotted where concealed; queried where doubtful	
	High-angle fault, showing dip	Dashed where approximately located, dotted where concealed, queried where doubtful. U, upthrown side; D, downthrown side. L signifies a linear feature plotted from aerial photographs, and assumed to be a fault	
	Strike and dip of beds	Strike and dip direction of beds	
	Strike and dip of foliation or schistosity	Strike and dip direction of foliation or schistosity	
	Location and number of stream sediment sample containing anomalous amounts of metal	Location and number of stream sediment sample.	



Base by U. S. Geological Survey, 1957
10,000 foot grid based on Alaska coordinate system, zone 8.



Geology by C. I. Sainsbury, Reuben Kachadoorian, T. E. Smith, and W. E. Todd, 1967.

TELLER (A-3) ALASKA
146500-916600/15x30

MAP SHOWING LOCATION OF STREAM SEDIMENT SAMPLE SITES IN THE TELLER A-3 QUADRANGLE, WEST-CENTRAL ALASKA

By
Reuben Kachadoorian, C.L. Sainsbury, and C.L. Hummel
1975