

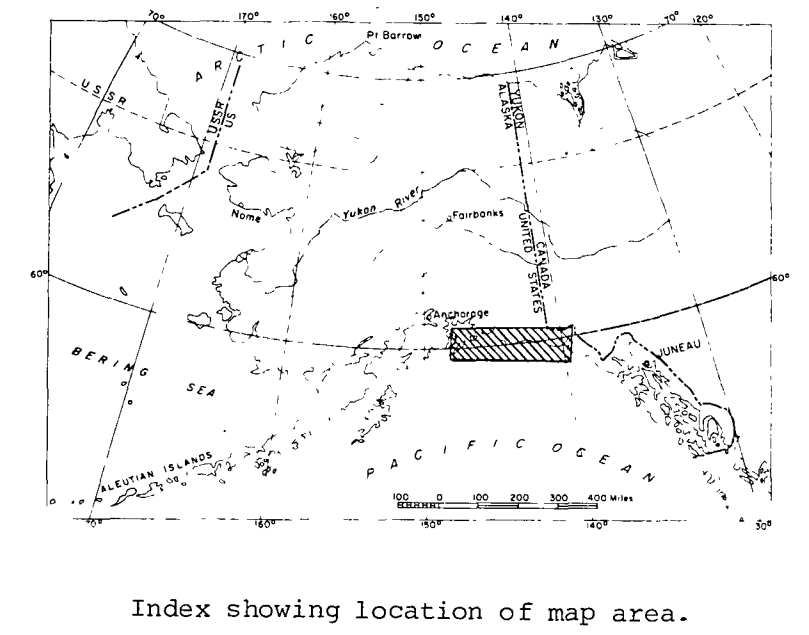
This map is a compilation of bathymetric data derived from the interpretation of approximately 10,000 km of 1.5 kHz echo sounder profiles collected by S. V. THOMPSON in September and October 1974 and NOAA SHIP SURVEYOR from June through September 1975. Bathymetry in and seaward of Yakutat Bay taken from NOAA National Ocean Survey chart 16760, 4th Ed., 1974.

Navigation was a combination of satellite navigation, Hi-Fix, Sea Fix and radar and generally has an accuracy of 1/2 kilometre.

The contour interval used varies with depth. From 0-200 metres, the interval is 25 m; from 200-500 metres, the interval is 100 m; beyond 500 metres, the interval is 500 m. In areas such as Hinchinbrook Entrance where the slope is extremely high, only the hundred metre contour lines are shown.

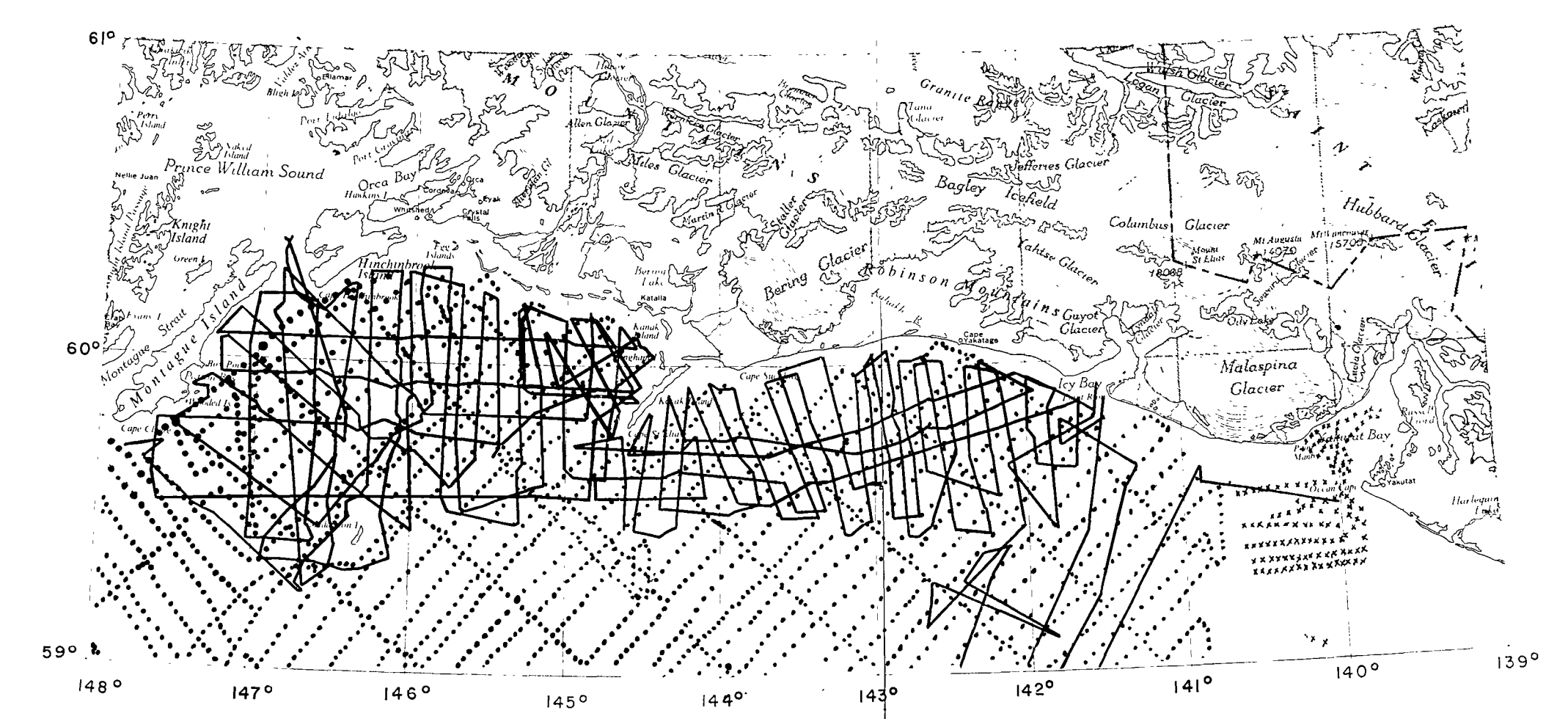
This map is the first detailed base map suitable for the compilation of geological and geophysical data from the northern Gulf of Alaska continental shelf. As new bathymetric data becomes available, this map will be updated and corrected.

Inset 1 shows the location of the study area, while Inset 2 shows the location of the THOMPSON and SURVEYOR tracklines and SOS chart 16760 data points.



Index showing location of map area.

0-200 metres: contour interval is 25 metres
 200-500 metres: contour interval is 100 metres
 Below 500 metres: contour interval is 500 metres



2. Location of tracklines: R/V THOMPSON —
 NOAA SURVEYOR
 NOS Chart 16760 XXX

BASE MAP OF THE NORTHERN GULF OF ALASKA

By
 Bruce F. Molnia and Paul R. Carlson
 1975

This map is preliminary and has not been reviewed for conformity with U.S. Geological Survey standards and nomenclature.

U.S. GEOLOGICAL SURVEY
 OPEN FILE MAP 75-506