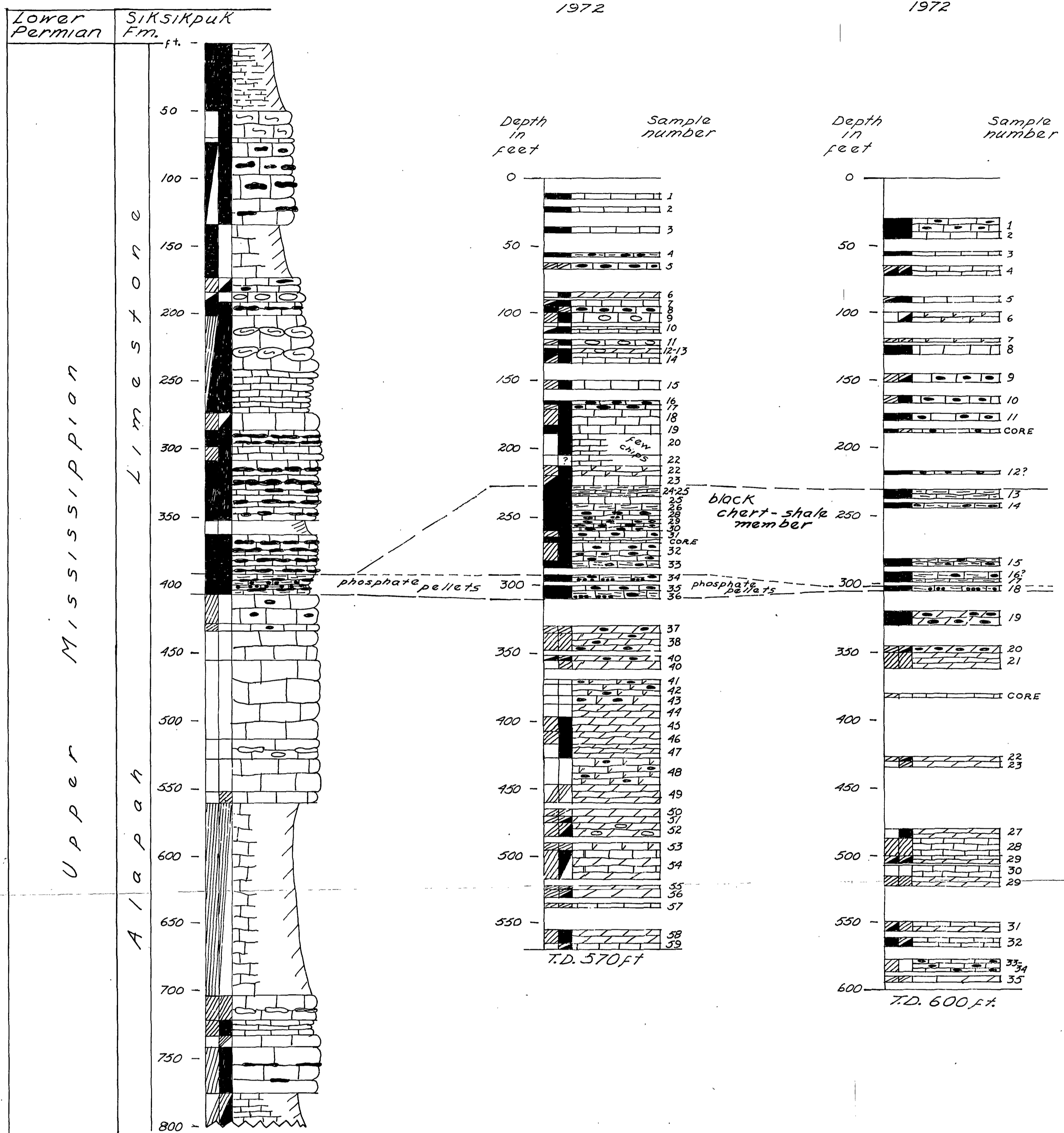


TiglukpuK Creek
 H.N. Reiser, 1950
 in Patton and Tailleir 1964

LLL Confusion Ck.
 DH-2 (east hole)
 1972

LLL Confusion Ck.
 DH-1 (west hole)
 1972



EXPLANATION OF SYMBOLS

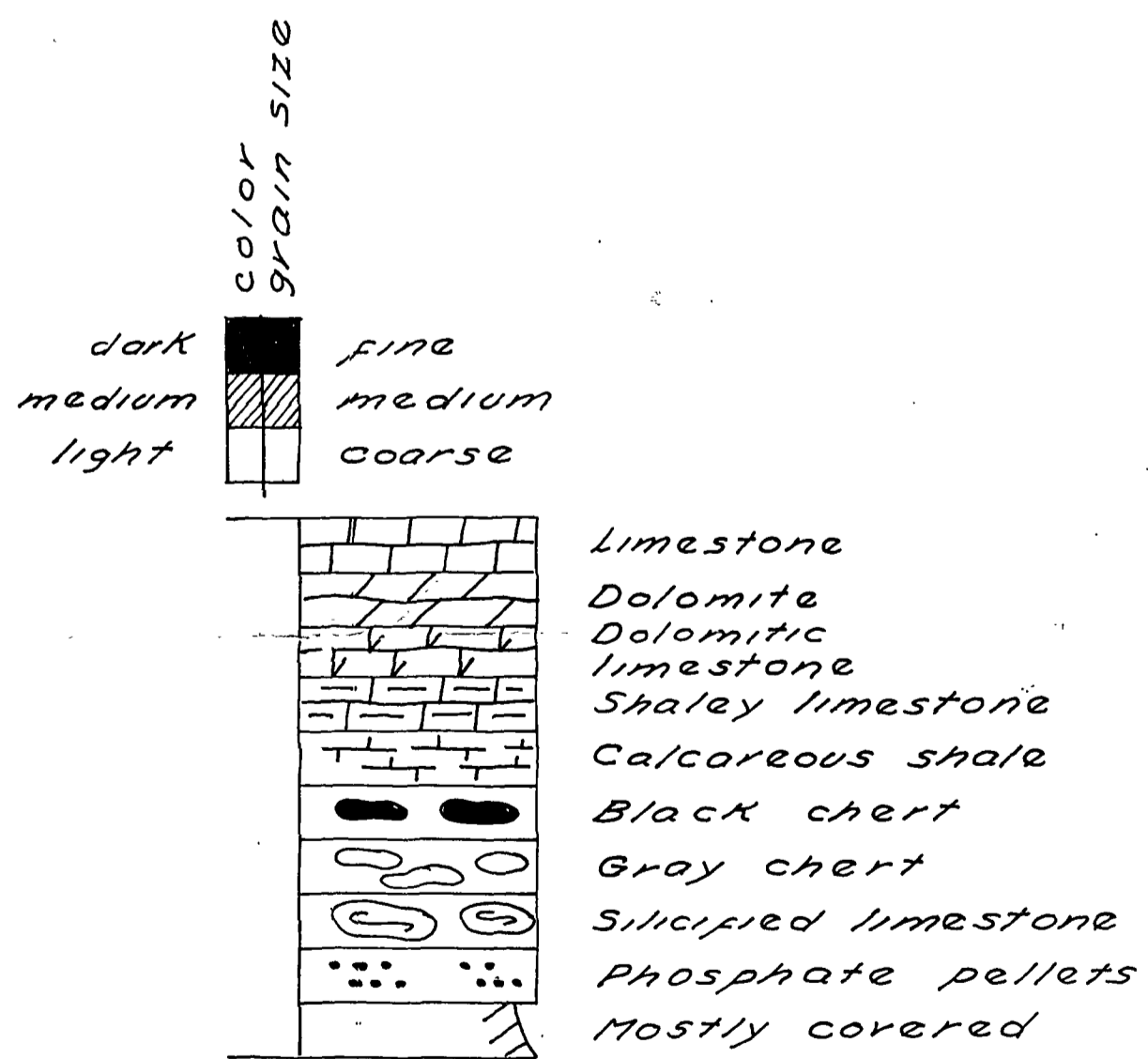


Fig. 2 Correlated sections of Alapah Limestone at TiglukpuK Creek and in Lawrence Livermore Laboratory Drill Holes 1 and 2 near Confusion Creek, northern Alaska.