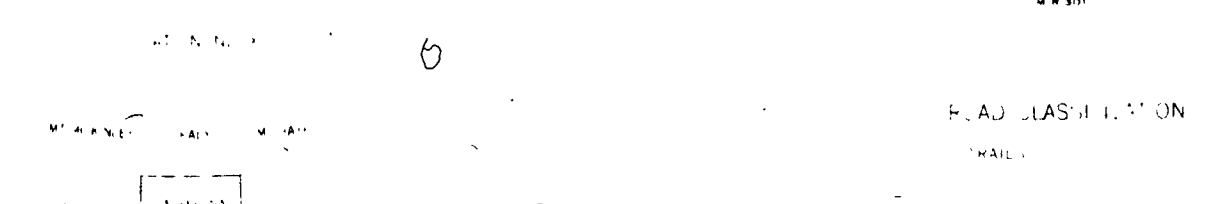
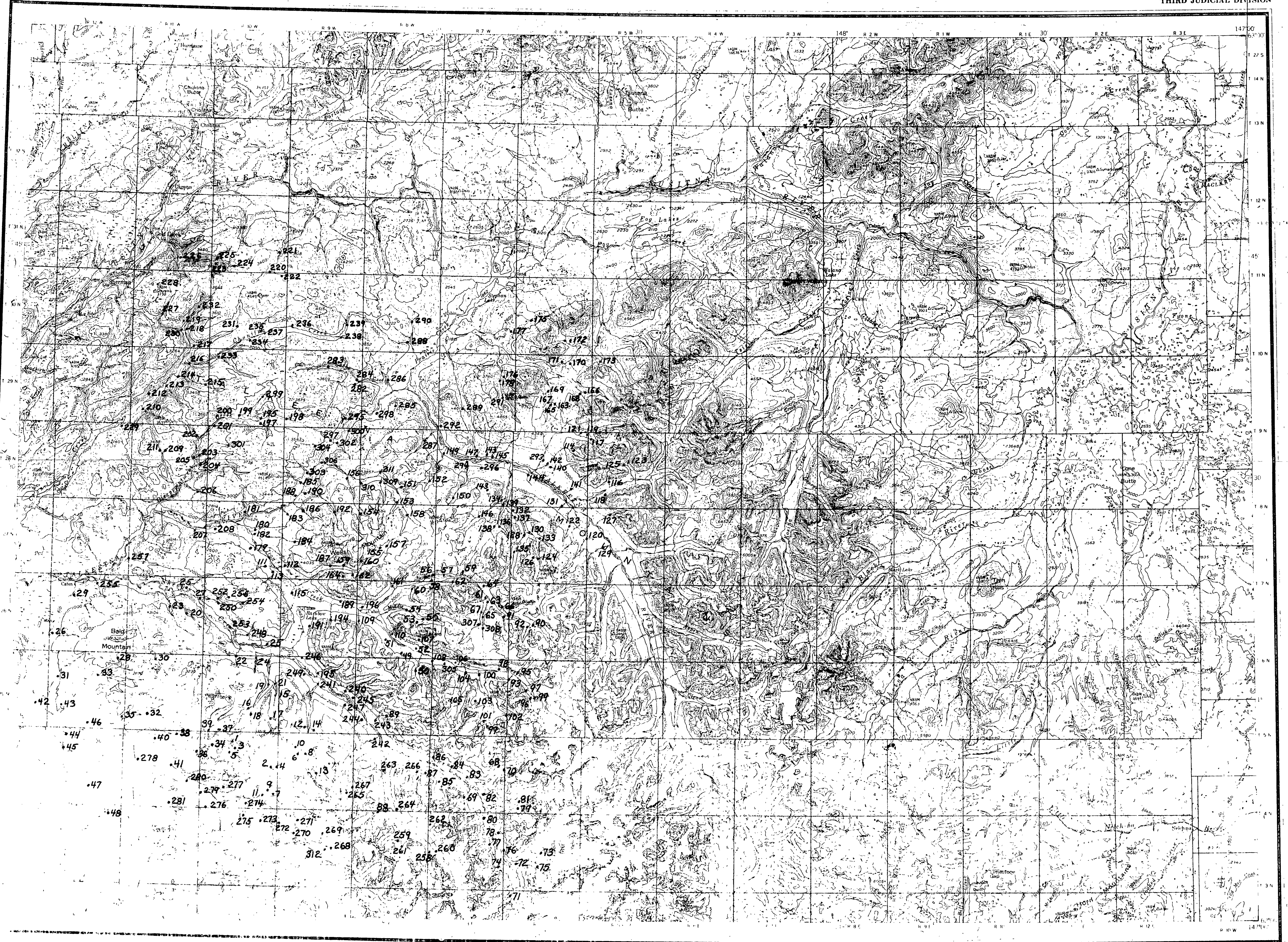


TALKEETNA MOUNTAINS



THIS MAP IS AVAILABLE FOR REPRODUCTION AND DISTRIBUTION  
 THROUGH THE NATIONAL GEOSPATIAL ARCHIVE  
 AT THE NATIONAL CENTER FOR GEOGRAPHIC INFORMATION  
 WASHINGTON, D.C. 20540

TALKEETNA MOUNTAINS, ALASKA

1954

Figure 1. -- Map showing sites at which heavy-mineral concentrate samples were collected in the Talkeetna Mountains quadrangle