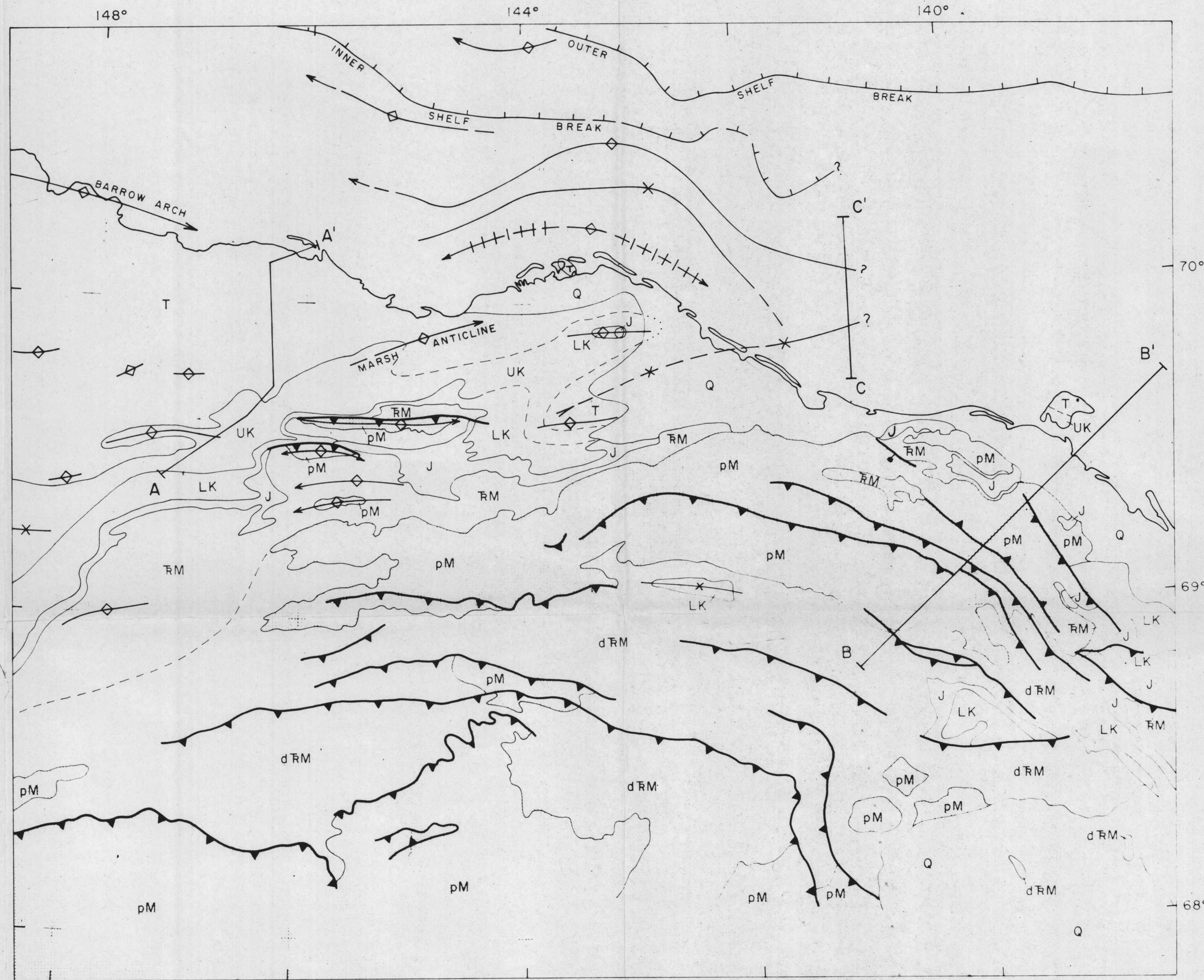


FIGURE 3



DEPARTMENT OF THE INTERIOR
U.S. GEOLOGICAL SURVEY

EXPLANATION FOR
FIGURE 3

BROOKIAN SEQUENCE

- Q - QUATERNARY - SURFICIAL DEPOSITS
- T - TERTIARY - SAGAVINAROK FORMATION
- UK - UPPER CRETACEOUS - COLVILLE GROUP
- LK - LOWER CRETACEOUS - NANUSHUK GROUP
(INCLUDES KONGAKUT FORMATION OF ELLESMERIAN SEQUENCE)

ELLESMERIAN SEQUENCE

- J - LOWER CRETACEOUS AND JURASSIC - KINGAK SHALE
- RM - TRIASSIC TO MISSISSIPPIAN - SHUBLIK FORMATION
- KAREN CREEK SANDSTONE
- SADLEROCHIT GROUP
- LISBURNE GROUP
- ENDICOTT GROUP
(dRM WHERE STRONGLY DEFORMED)

FRANKLINIAN SEQUENCE

- pM - PPE-MISSISSIPPIAN - SEDIMENTARY, METASEDIMENTARY,
VOLCANIC AND GRANITIC ROCKS

- ANTICLINE OR ANTICLINAL ARCH,
SHOWING PLUNGE
- SYNCLINE, SHOWING PLUNGE
- THRUST FAULT
SAWTEETH ON UPPER PLATE
- NORMAL FAULT
BALL ON DOWNTROWN SIDE
- STRUCTURALLY HIGH AREA ALONG
ANTICLINAL ARCH
- LINE OF STRUCTURAL CROSS SECTION
SEE FIGURES 4A, 4B, 4C

GENERALIZED GEOLOGIC MAP
ARCTIC NATIONAL WILDLIFE RANGE AND VICINITY

0 20 40 60 80 100 MILES

0 20 40 60 80 100 KM

Scale 1:1,000,000
Polar stereographic projection

NOTE: SEE FIGURE 1 FOR GEOGRAPHIC FEATURES

Geology generalized from Reisel, et al., 1971, 1974,
Norris, 1977, and Beikman and Lathram, 1975