

FIGURE 4 A. STRUCTURAL CROSS SECTION FROM KEMIK GAS FIELD TO FLAXMAN ISLAND. DATA FROM A COMPILATION OF GEOLOGIC FORMATIONS ENCOUNTERED IN BOREHOLES BETWEEN THE CANNING AND COLVILLE RIVERS BY TAILLEUR AND PESSEL, IN PRESS. THE CONTROL POINTS FOR THE CROSS SECTION (BOREHOLES) WOULD NOT SUFFICE TO DELINEATE ANY SMALL SCALE GEOLOGIC STRUCTURES THAT MIGHT BE PRESENT.

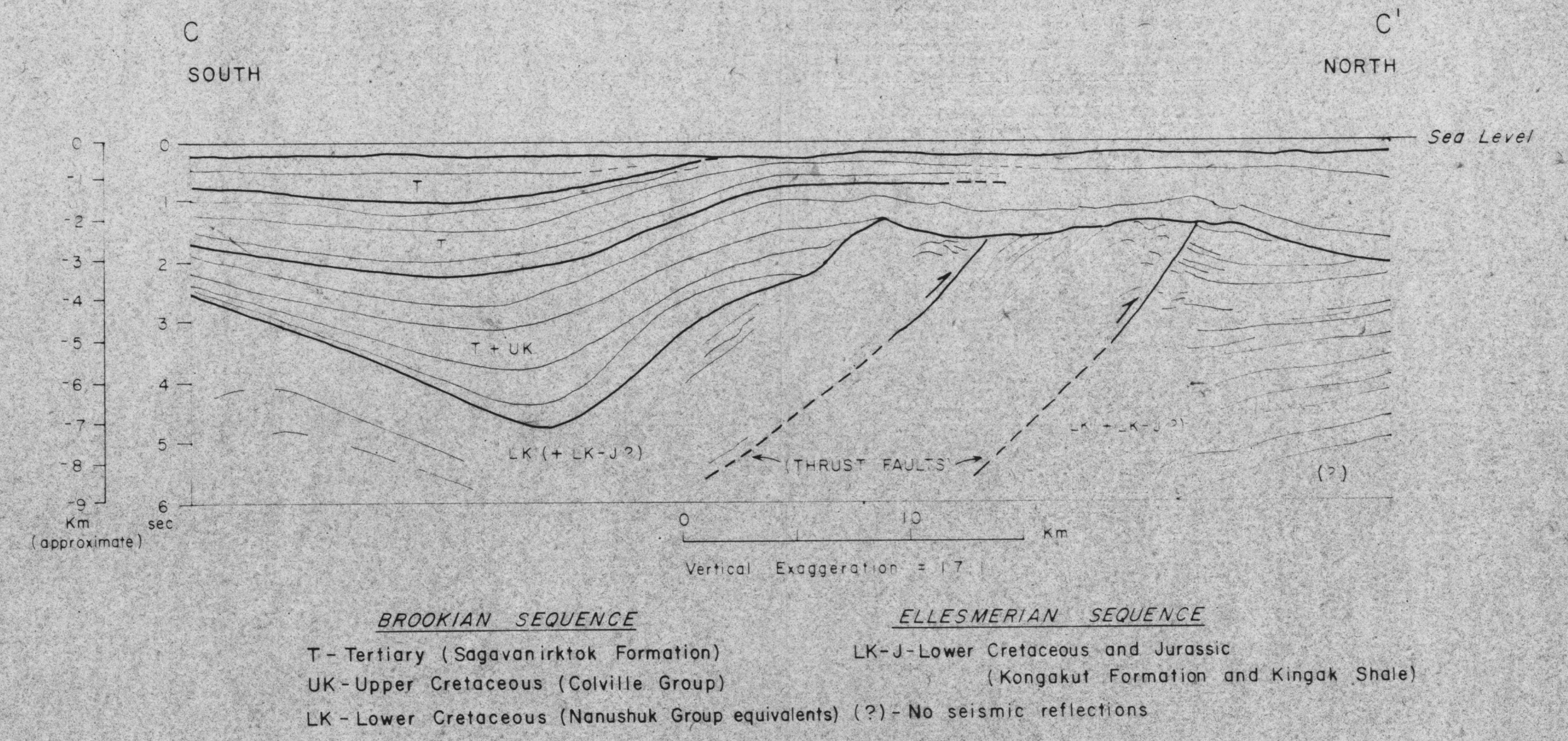


FIGURE 4 C. STRUCTURAL CROSS SECTION FROM BEAUFORT SHELF BETWEEN 6 KM AND 53 KM OFFSHORE ALONG 141°00' W. LONGITUDE. DATA FROM INTERPRETATION OF U.S. GEOLOGICAL SURVEY, 1977 CDP SEISMIC REFLECTION PROFILES (PRESENT STUDY).

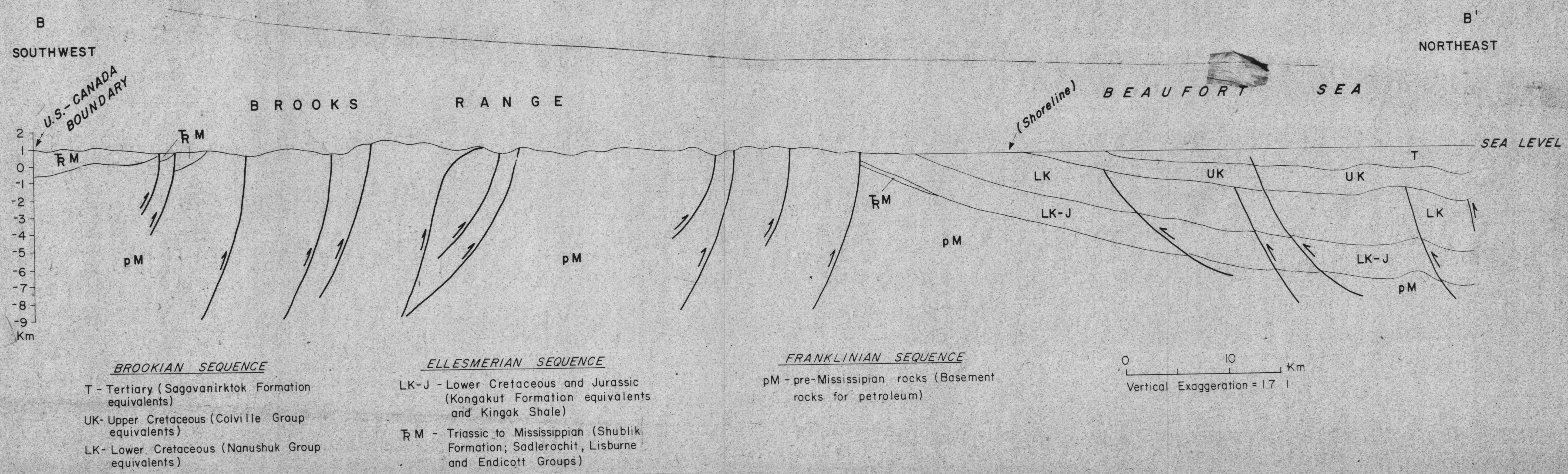


FIGURE 4 B. STRUCTURAL CROSS SECTION FROM ALASKA-YUKON BOUNDARY NEAR FIRTH RIVER TO THE CONTINENTAL SHELF NORTHEAST OF HERSCHEL ISLAND. DATA FROM GEOLOGIC FIELD MAPPING IN NORTHERN YUKON AND INTERPRETATION OF CDP SEISMIC REFLECTION RECORDS ON THE BEAUFORT SHELF. BY MORRIS, 1977.