

This report is preliminary and has not been edited or reviewed for conformity with Geological Survey standards and nomenclature.

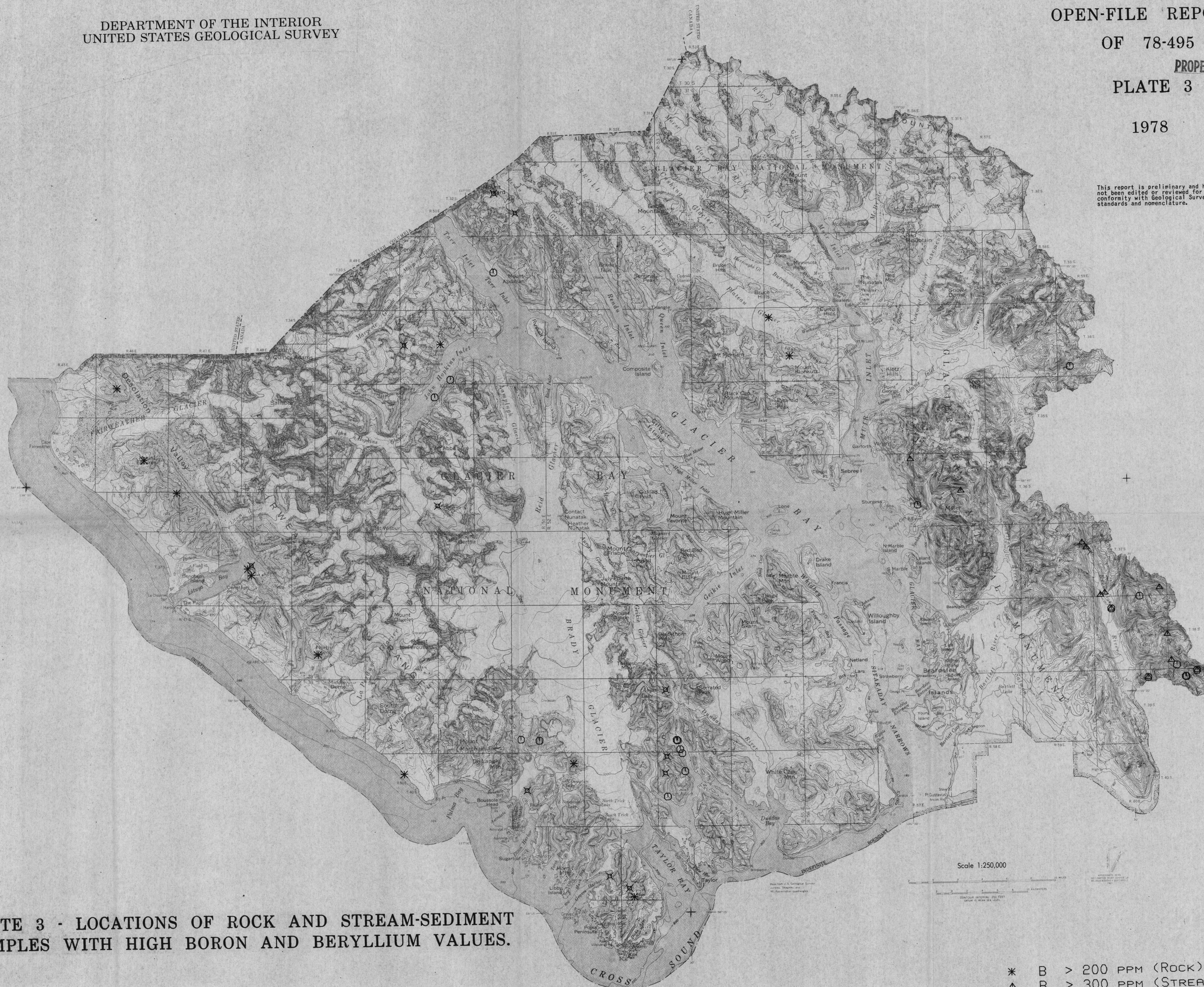


PLATE 3 - LOCATIONS OF ROCK AND STREAM-SEDIMENT
SAMPLES WITH HIGH BORON AND BERYLLIUM VALUES.

* B > 200 PPM (ROCK)
▲ B > 300 PPM (STREAM)
× BE > 3.0 PPM (ROCK)