

This report is preliminary and has not been edited or reviewed for conformity with Geological Survey standards and nomenclature.

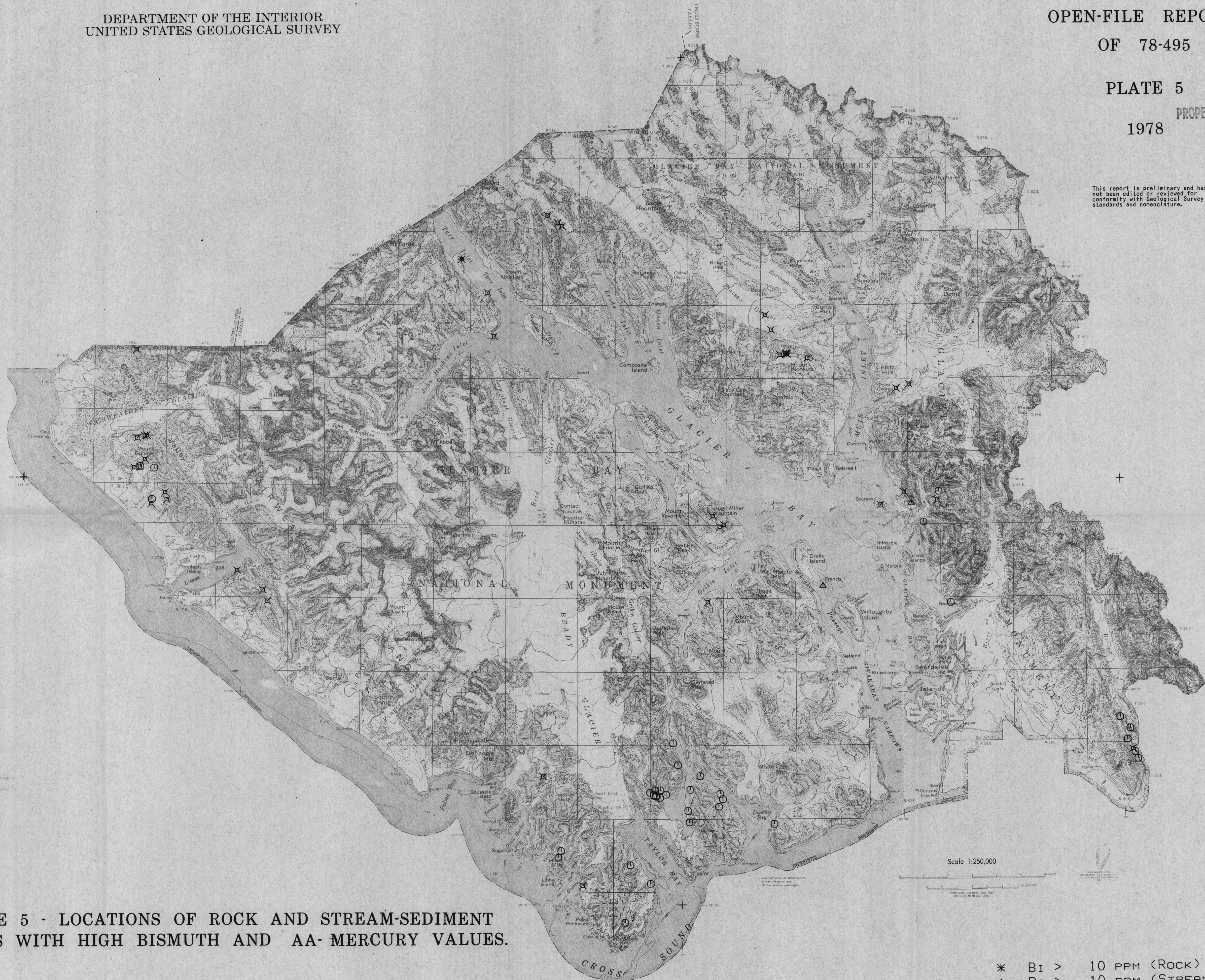


PLATE 5 - LOCATIONS OF ROCK AND STREAM-SEDIMENT SAMPLES WITH HIGH BISMUTH AND AA-MERCURY VALUES.

Scale 1:250,000

- * Bi > 10 PPM (ROCK)
- ▲ Bi > 10 PPM (STREAM)
- ⊗ Hg > 0.10 PPM (ROCK)
- Hg > 0.25 PPM (STREAM)