

This report is preliminary and has not been edited or reviewed for conformity with Geological Survey standards and nomenclature.

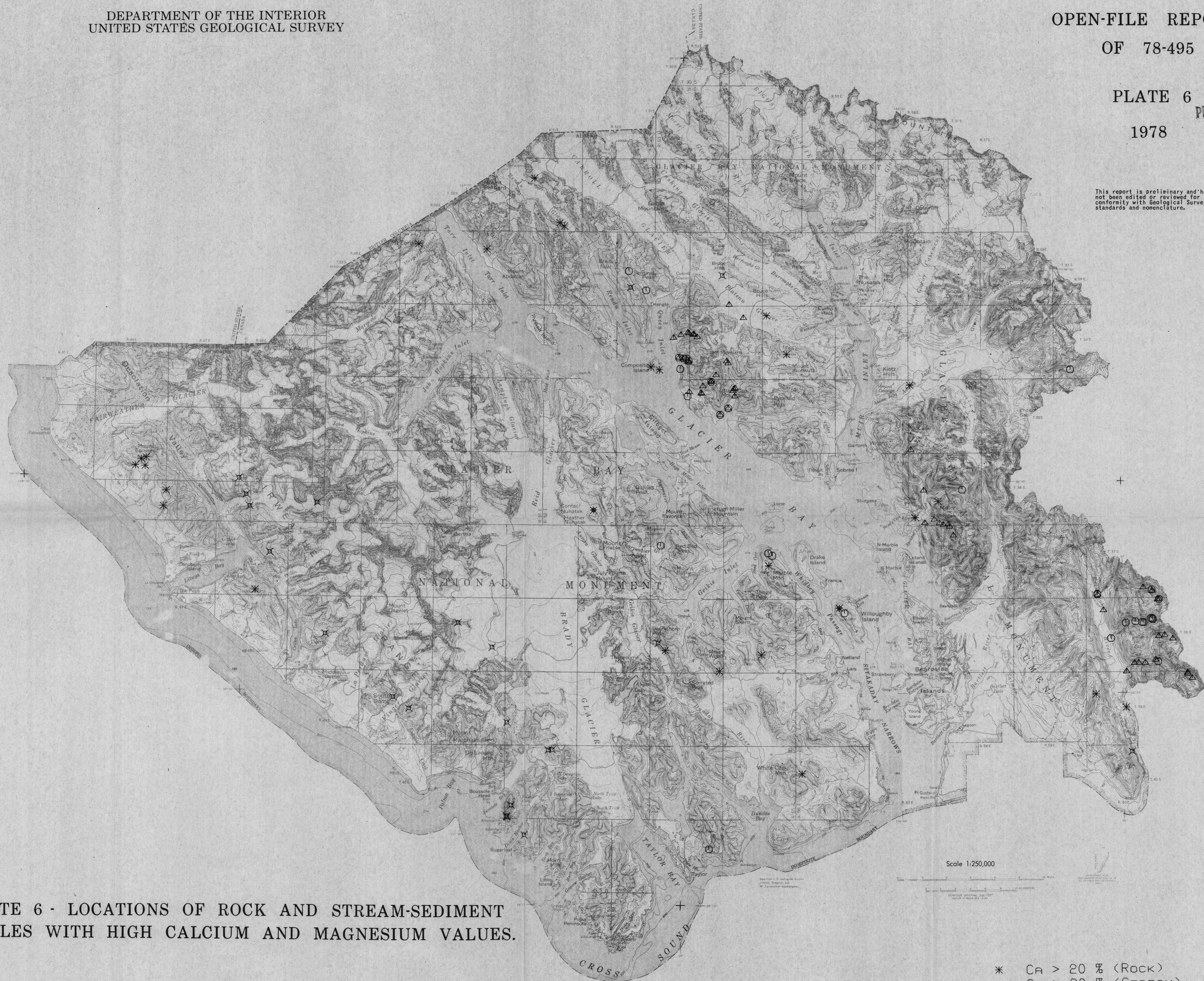


PLATE 6 - LOCATIONS OF ROCK AND STREAM-SEDIMENT
SAMPLES WITH HIGH CALCIUM AND MAGNESIUM VALUES.

* CA > 20 % (ROCK)
Δ CA > 30 % (STREAM)