

This report is preliminary and has not been edited or reviewed for conformity with Geological Survey standards and nomenclature.

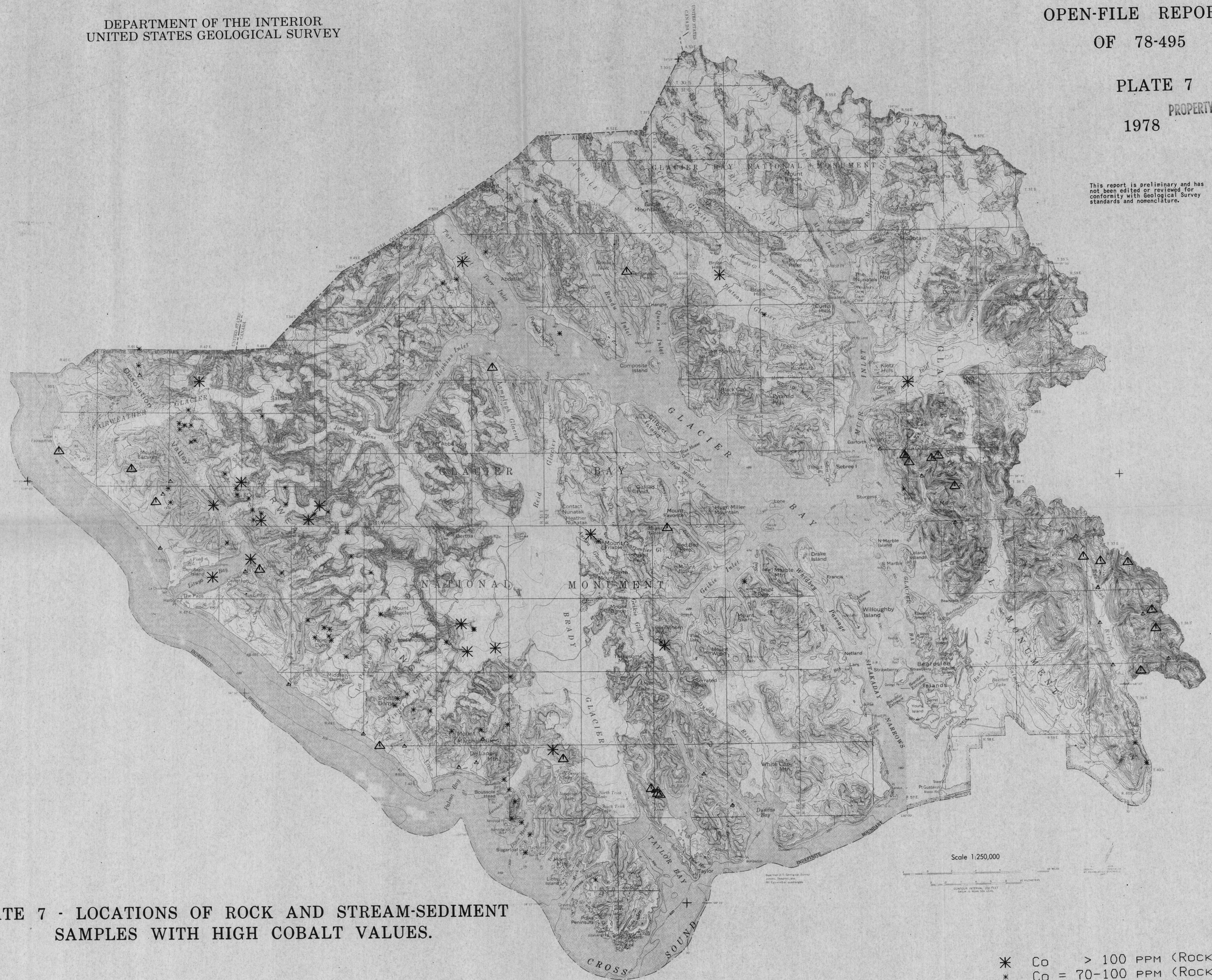


PLATE 7 - LOCATIONS OF ROCK AND STREAM-SEDIMENT SAMPLES WITH HIGH COBALT VALUES.

* Co > 100 PPM (ROCK)
 * Co = 70-100 PPM (ROCK)
 Δ Co > 70 PPM (STREAM)
 Δ Co = 50-70 PPM (STREAM)