

This report is preliminary and has not been edited or reviewed for conformity with Geological Survey standards and nomenclature.

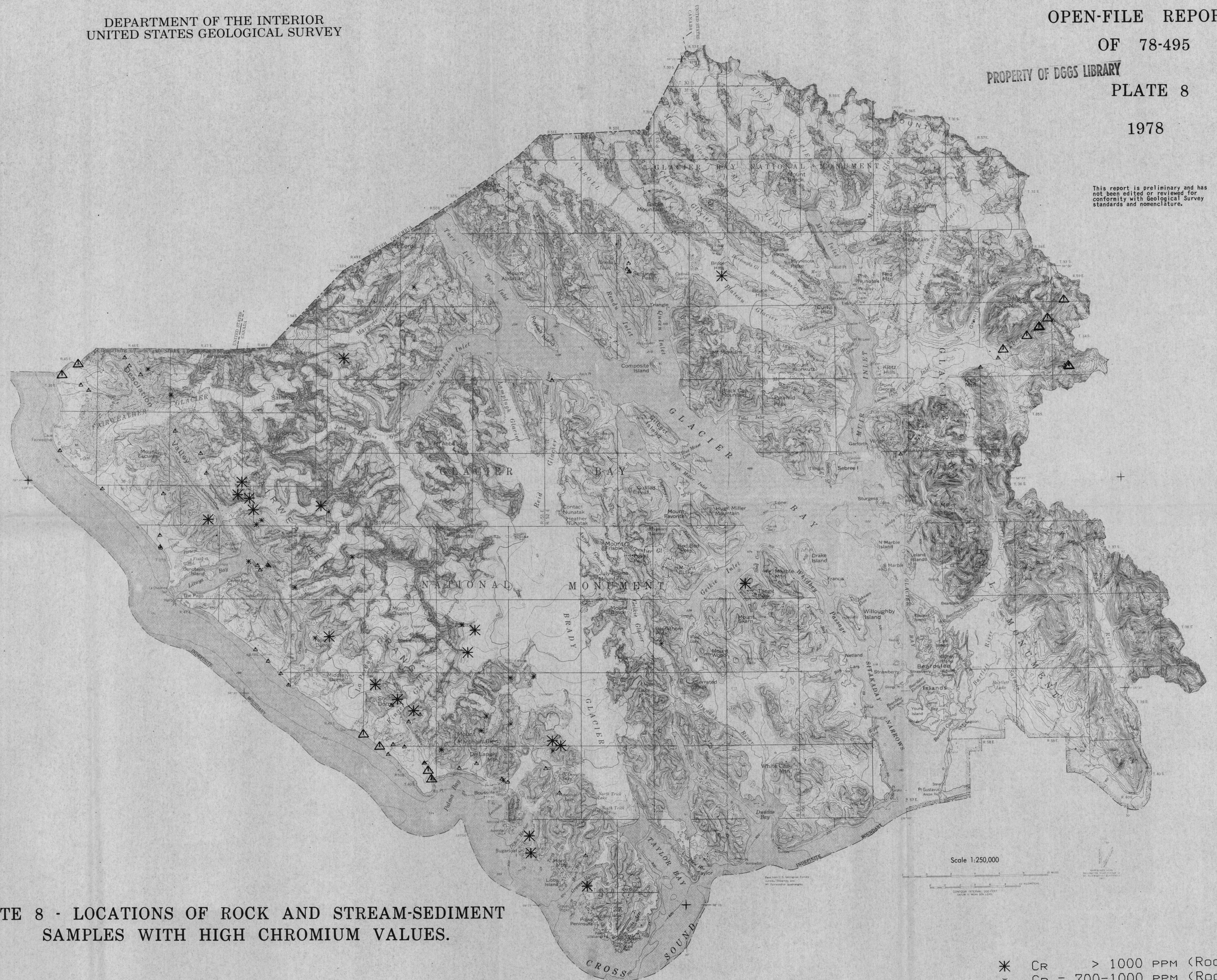


PLATE 8 - LOCATIONS OF ROCK AND STREAM-SEDIMENT
SAMPLES WITH HIGH CHROMIUM VALUES.

- * CR > 1000 PPM (ROCK)
- * CR = 700-1000 PPM (ROCK)
- Δ CR > 700 PPM (STREAM)
- ◻ CR = 300- 700 PPM (STREAM)