

This report is preliminary and has not been edited or reviewed for conformity with Geological Survey standards and nomenclature.

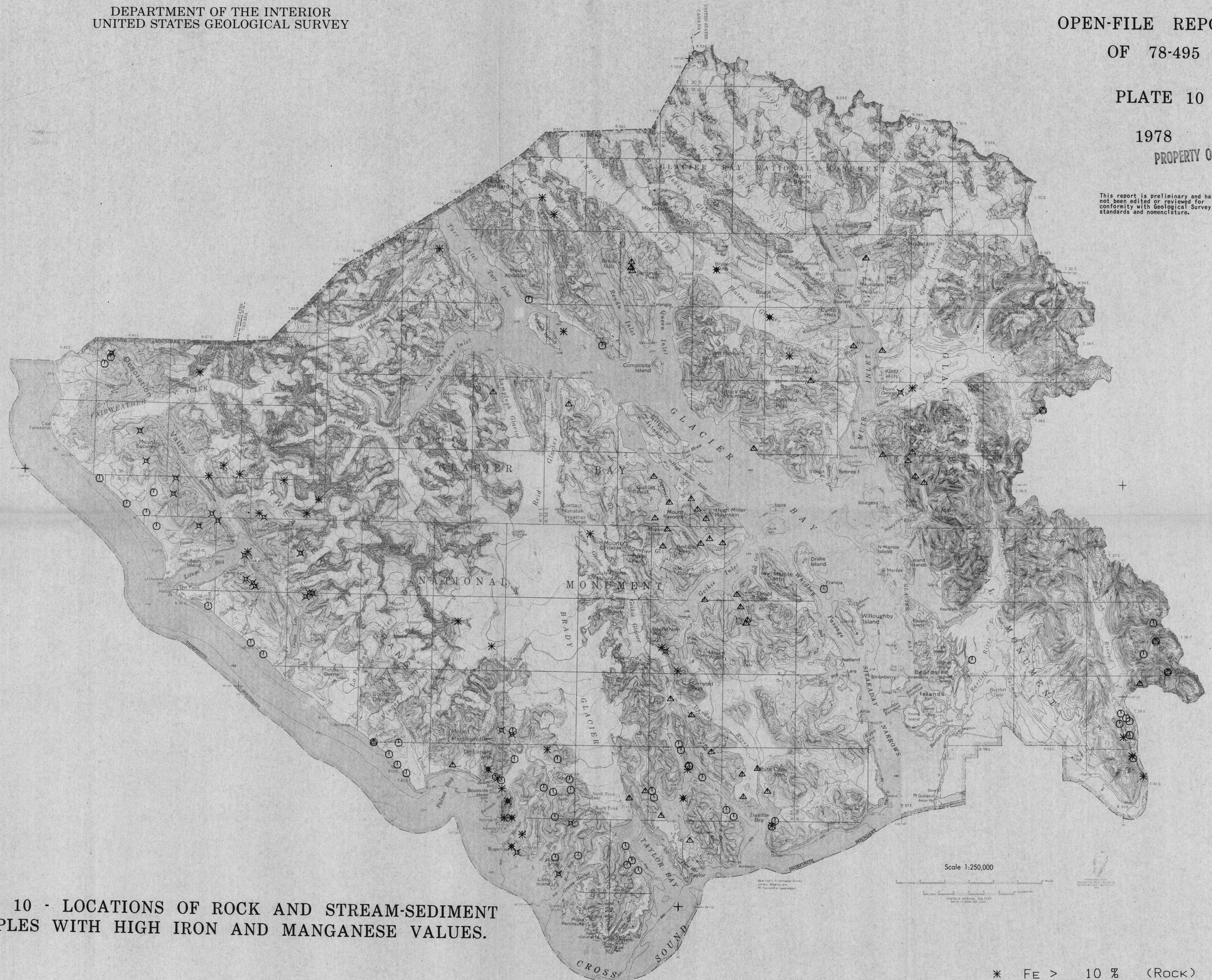


PLATE 10 - LOCATIONS OF ROCK AND STREAM-SEDIMENT
 SAMPLES WITH HIGH IRON AND MANGANESE VALUES.

- * FE > 10 % (ROCK)
- △ FE > 15 % (STREAM)
- ⊗ MN > 3000 PPM (ROCK)
- MN > 3000 PPM (STREAM)