

PROPERTY OF DGGG LIBRARY

This report is preliminary and has not been edited or reviewed for conformity with Geological Survey standards and nomenclature.

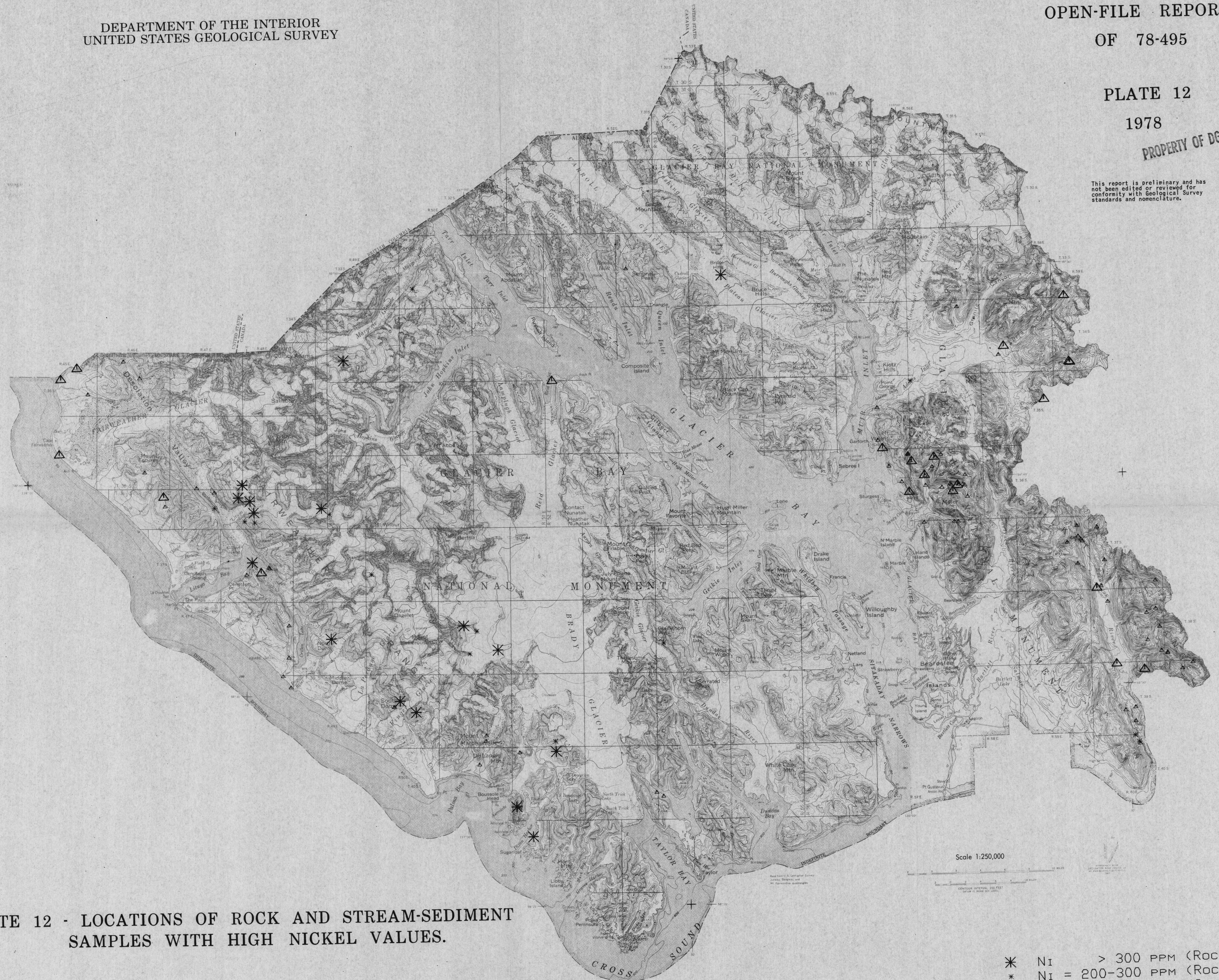


PLATE 12 - LOCATIONS OF ROCK AND STREAM-SEDIMENT SAMPLES WITH HIGH NICKEL VALUES.

- * NI > 300 PPM (ROCK)
- * NI = 200-300 PPM (ROCK)
- △ NI > 150 PPM (STREAM)
- △ NI = 100-150 PPM (STREAM)