

This report is preliminary and has not been edited or reviewed for conformity with Geological Survey standards and nomenclature.

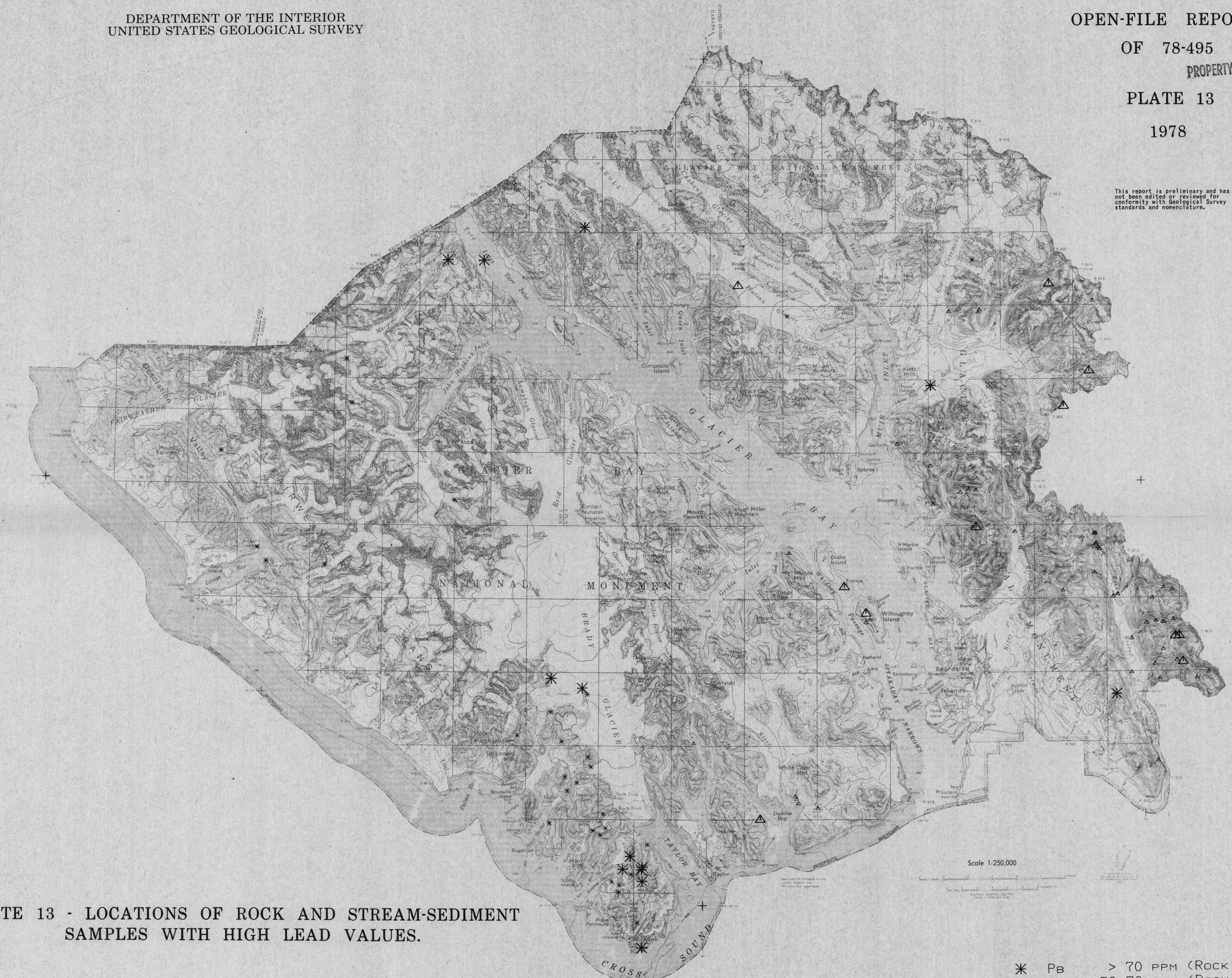


PLATE 13 - LOCATIONS OF ROCK AND STREAM-SEDIMENT SAMPLES WITH HIGH LEAD VALUES.

- * PB > 70 PPM (ROCK)
- * PB = 50-70 PPM (ROCK)
- △ PB > 100 PPM (STREAM)
- △ PB = 50-100 PPM (STREAM)