

This report is preliminary and has not been edited or reviewed for conformity with Geological Survey standards and nomenclature.

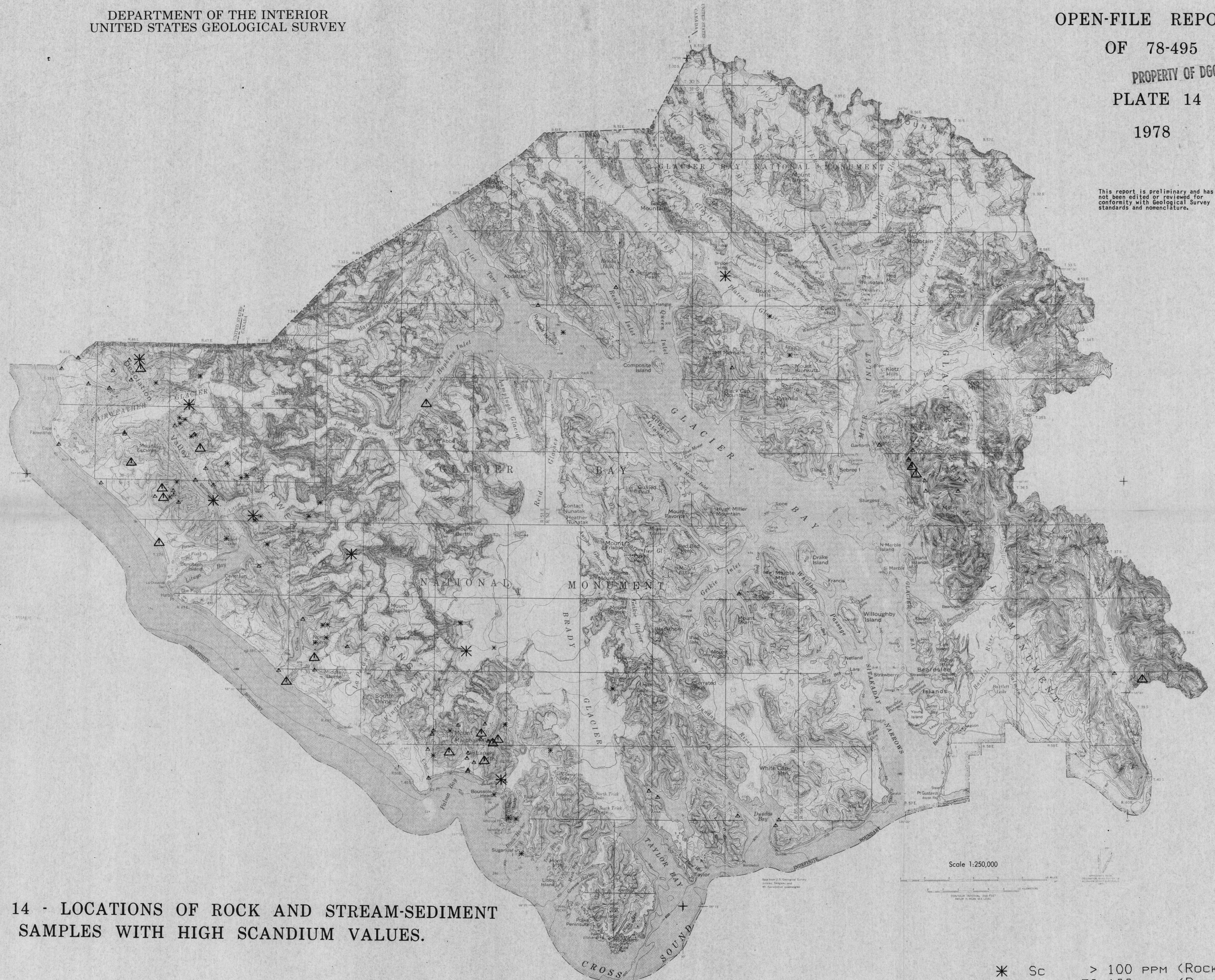


PLATE 14 - LOCATIONS OF ROCK AND STREAM-SEDIMENT
SAMPLES WITH HIGH SCANDIUM VALUES.

- * Sc > 100 PPM (ROCK)
- * Sc = 70-100 PPM (ROCK)
- △ Sc > 60 PPM (STREAM)
- △ Sc = 50-60 PPM (STREAM)