

This report is preliminary and has not been edited or reviewed for conformity with Geological Survey standards and nomenclature.

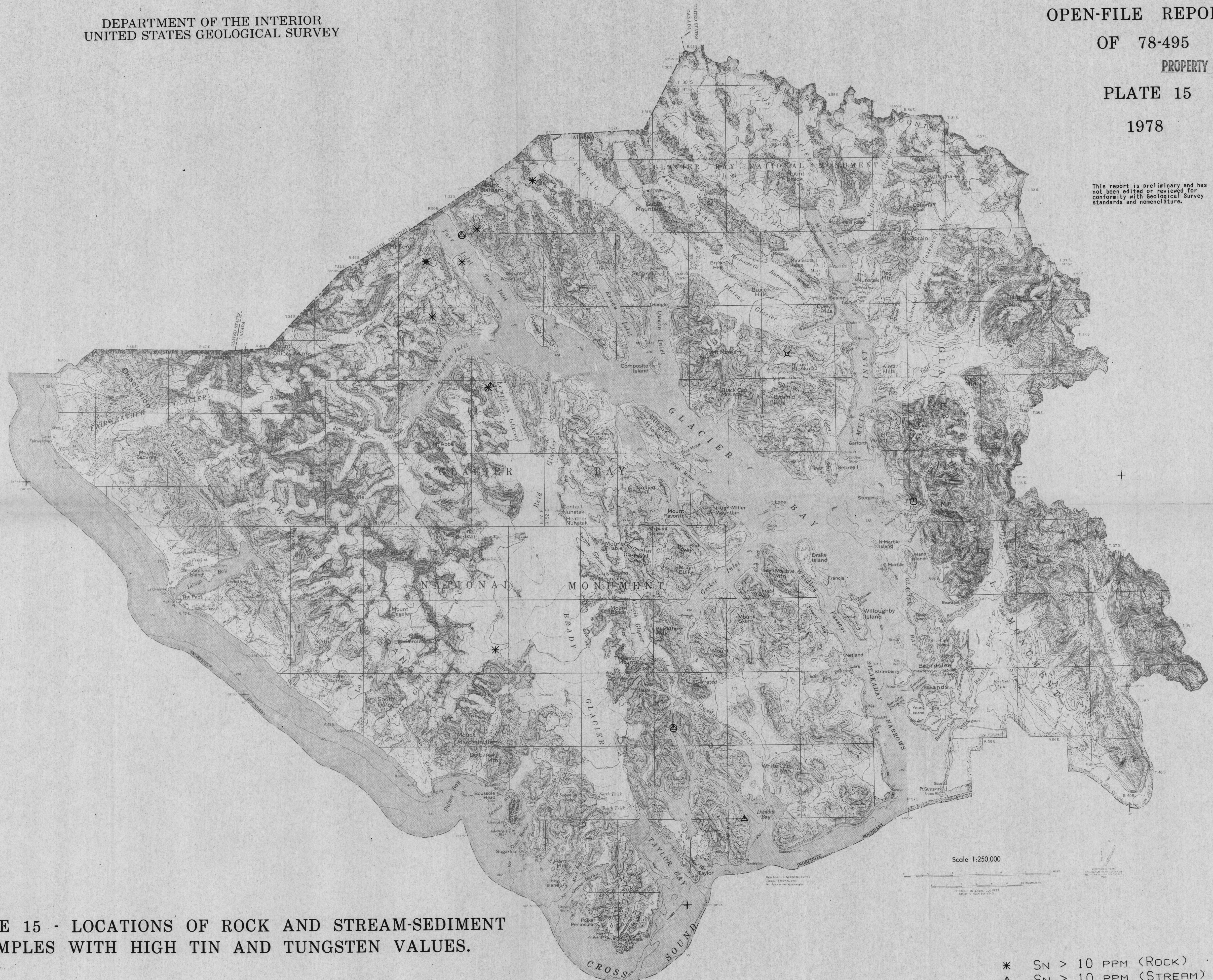


PLATE 15 - LOCATIONS OF ROCK AND STREAM-SEDIMENT  
SAMPLES WITH HIGH TIN AND TUNGSTEN VALUES.

- \* SN > 10 PPM (ROCK)
- ▲ SN > 10 PPM (STREAM)
- ⊗ W > 50 PPM (ROCK)
- W > 50 PPM (STREAM)