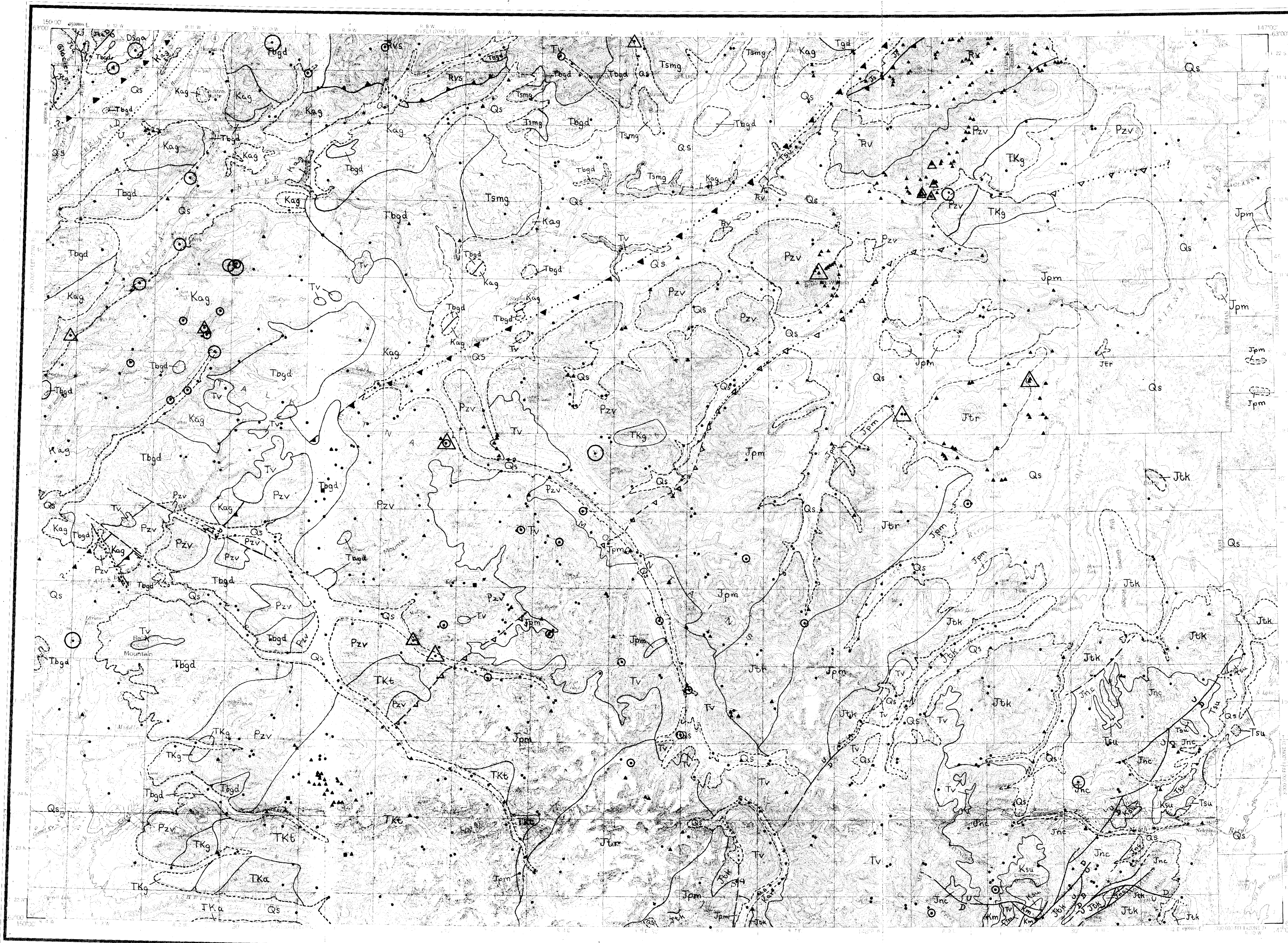
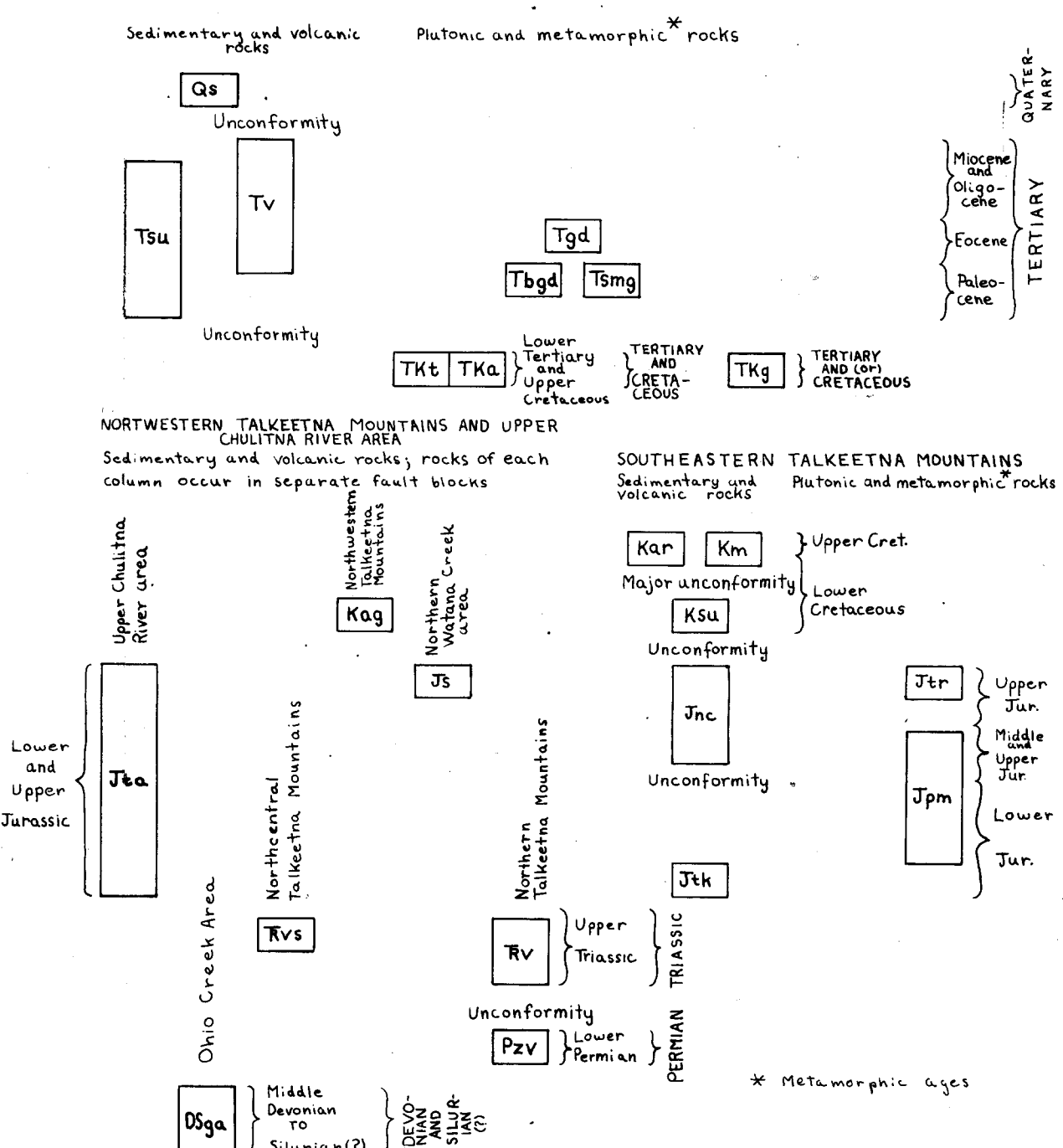


please return to  
MINERALS LIBRARY  
A.G.S.S.



CORRELATION OF MAP UNITS

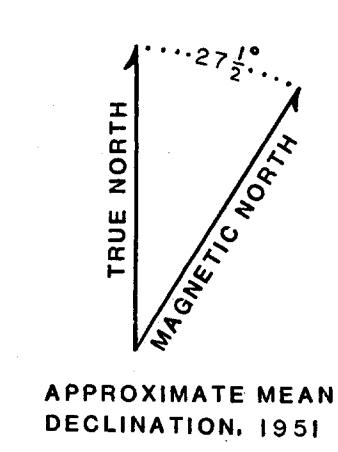
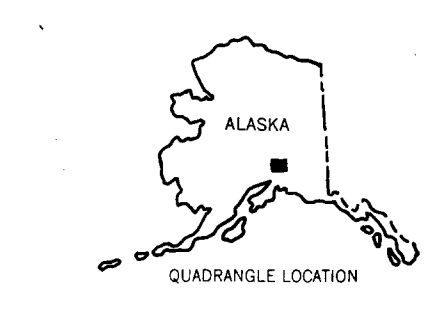
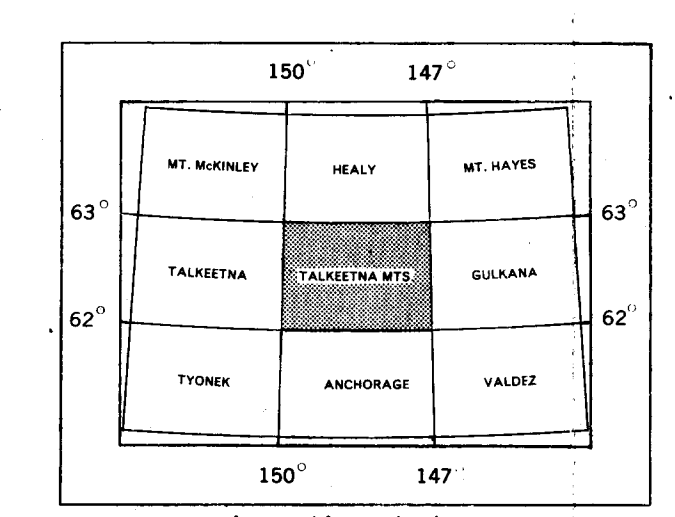
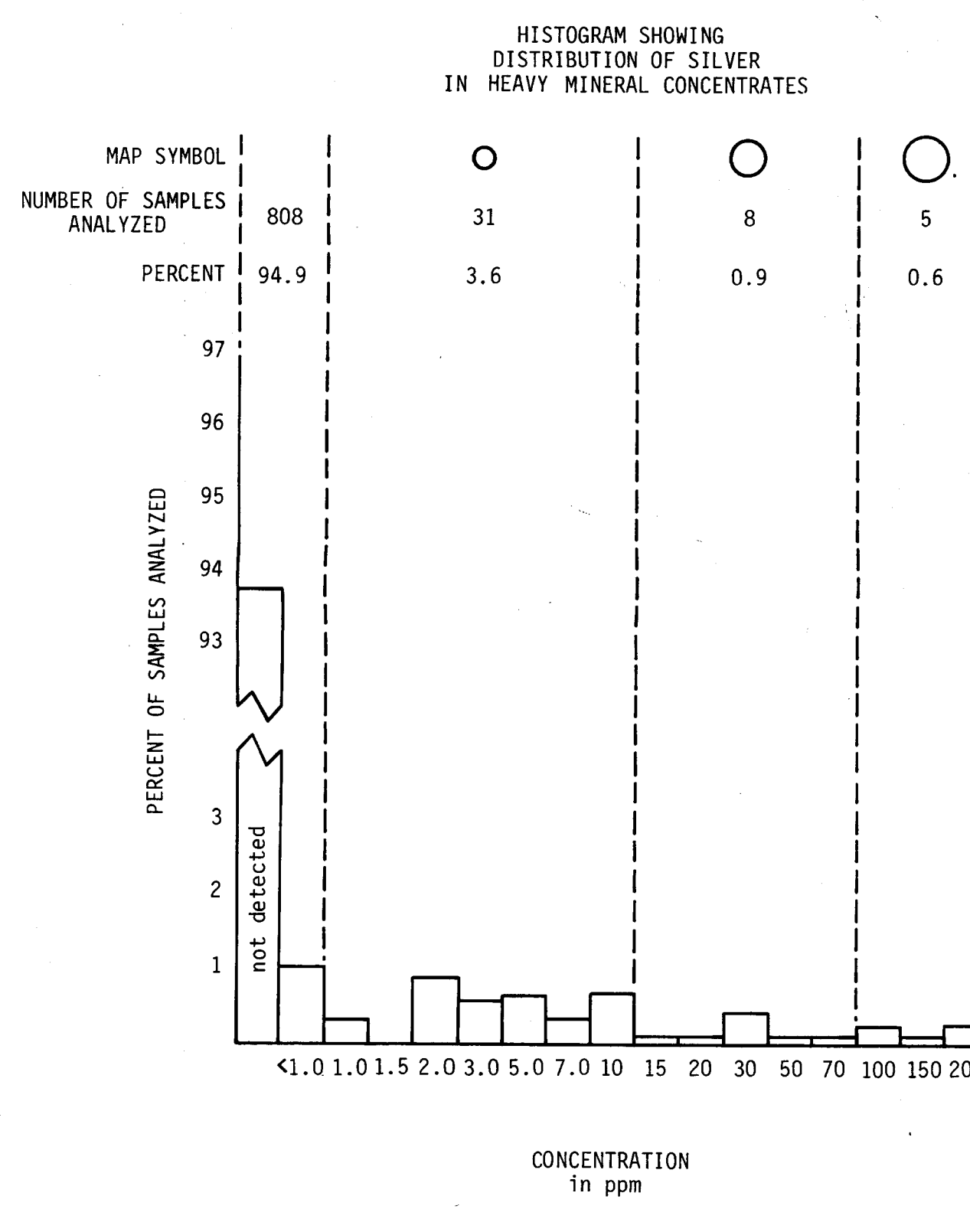
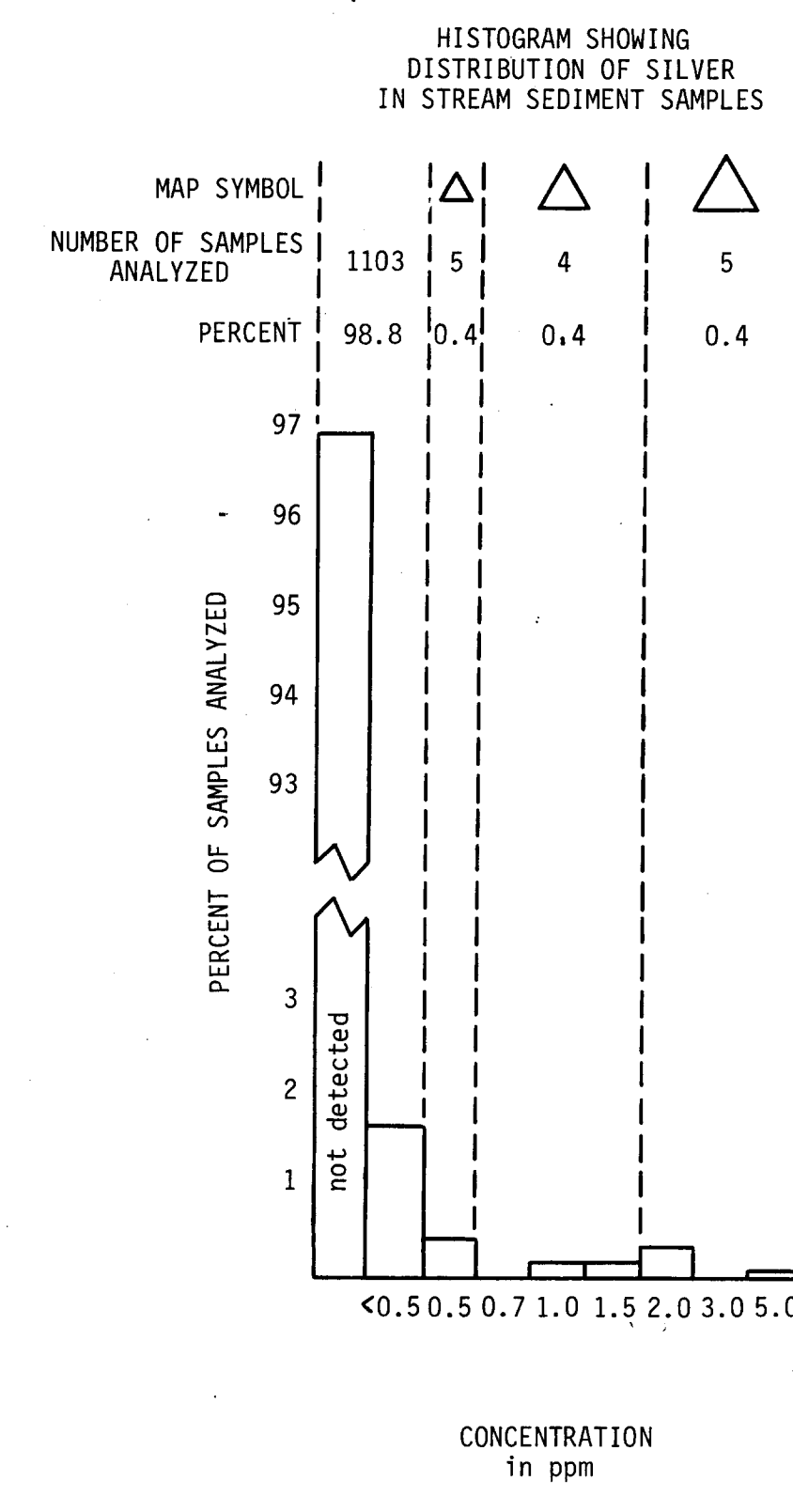
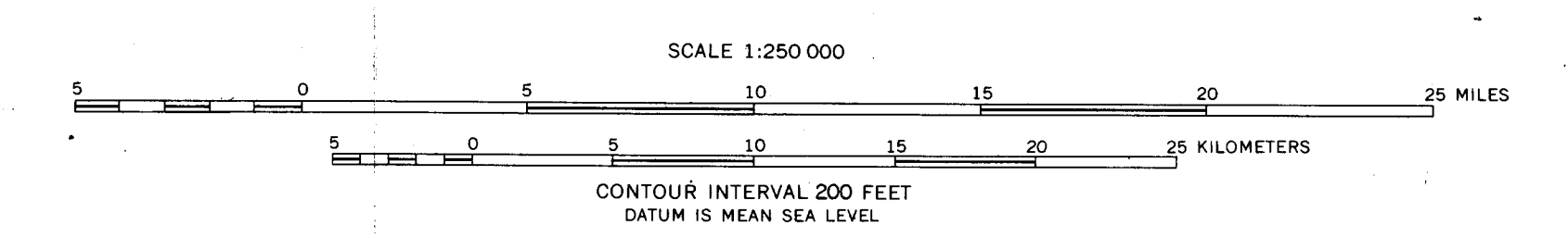
Geology generalized after Coe et al. and others, 1978



DESCRIPTION OF MAP UNITS

- Qs SURFICIAL DEPOSITS, UNDIFFERENTIATED (Quaternary).
- Tv VOLCANIC ROCKS, UNDIFFERENTIATED (Paleocene to Pleistocene) (T-felsic and mafic subaerial volcanic rocks and related shallow intrusions).
- Tsu TERTIARY SEDIMENTARY ROCKS, UNDIFFERENTIATED (Paleocene to Miocene)-Terrestrial, mostly fluvial strata with a few lignite interbeds.
- Tgd GRANODIORITE (Eocene).
- Tpdt BIOTITE AND HORNBLende GRANODIORITE (Paleocene, in part early Eocene).
- Timg SCHIST, MIDWITTE, AND GRANITE (Paleocene intrusive and metamorphic ages)-Migmatitic border zone of biotite and hornblende granodiorite.
- TKt TONALITE (Upper Cretaceous and Lower Paleocene).
- TKa ADMELLITE (Upper Cretaceous and Lower Paleocene).
- TKg GRANITIC ROCKS, UNDIFFERENTIATED (Cretaceous and/or Tertiary).
- Kar ARKOSE RIDGE FORMATION (Lower and/or Upper Cretaceous).
- Km MTAUSUA FORMATION (Lower and Upper Cretaceous).
- Ksu SEDIMENTARY ROCKS, UNDIFFERENTIATED (Lower Cretaceous)-Shallow marine sequence of calcareous sandstone, claystone, and massive clastic limestone.
- Kag ARGILLITE AND LITHIC GRAYWACKE (Lower Cretaceous)-Intercalated, marine, flyschlike sequence.
- Js SEDIMENTARY AND VOLCANIC ROCKS, UNDIFFERENTIATED (Upper Jurassic)-Marine sequence of argillite, graywacke, conglomerate, and andesitic to latitic feldspar porphyry dikes and intercalated flows.
- Jtr TRONDJEMLITE (Upper Jurassic)
- Jnc JURASSIC SEDIMENTARY ROCKS, UNDIFFERENTIATED (Middle and Upper Jurassic) --Includes Naneke and Chitina Formations, and Tuxedoi Group.
- Jta CRYSTAL TUFF, ARGILLITE, CHERT, GRAYWACKE, AND LIMESTONE (Lower to Upper Jurassic)-Shallow to moderately deep marine, intercalated sequence.
- Jpm PLUTONIC AND METAMORPHIC ROCKS, UNDIFFERENTIATED (Lower to Upper Jurassic)-Mainly quartz diorite, granodiorite, amphibolite, and gneiss.
- Jtk TALKEETNA FORMATION (Lower Jurassic).
- Jts METABASALT AND SLATE (Upper Triassic)-Intercalated, shallow-water marine sequence.
- Jtr BASALTIC METAVOLCANIC ROCKS (Upper Triassic)-Mainly shallow-water marine metabasalt flows.
- Pzv BASALTIC AND ANDESITIC METAVOLCANIC ROCKS (Pennsylvanian(?) and Early Permian)-Metamorphosed marine sequence of inter-layered basaltic to andesitic flows, tuffs, coarse volcanoclastic rocks, and subordinate mudstone and limestone.
- Dsg GRAYWACKE, ARGILLITE, SHALE, AND LIMESTONE (Sturlian?) to Middle Devonian)-Intercalated marine sequence, probably continental margin deposits.

Base map from U.S. Geological Survey, 1:250,000  
Talkeetna Mountains Quadrangle, Alaska, 1955



EXPLANATION OF GEOCHEMICAL MAP SYMBOLS

- △ - Location of stream sediment sample
- - Location of heavy mineral concentrate sample
- △ - Location of both stream sediment and heavy mineral concentrate sample
- △ - Stream sediment sample with possibly significant silver value. Increase in symbol size indicates higher analytical value as shown on histogram.
- - Heavy mineral concentrate sample with possibly significant silver value. Increase in symbol size indicates higher analytical value as shown on histogram.

EXPLANATORY STATEMENT

In the course of U.S. Geological Survey investigations of the Talkeetna Mountains quadrangle, 1118 stream sediment, 852 heavy mineral concentrate, and 501 rock samples were collected. All of these samples were analyzed for up to 20 elements by a six-step semi-quantitative spectrographic method (Grimes and Marranzino, 1968). Most of the stream sediment and rock samples were also analyzed for up to 4 elements by atomic absorption spectrophotometry, as described by Ward and others (1969). The present map shows the sample collection sites of 1117 stream sediment samples and 852 heavy mineral concentrates which were analyzed for silver by the spectrographic method. Complete analytical data plus location maps, station coordinates, and discussion of sampling and analytical procedures for samples from sites shown on the present map are published in a report by Miller and others (1978). Concentration of metals in geochemical samples varies for different lithologies and in different areas. Because of this, as well as variability introduced from other sources such as sampling practice, analytical variance, and degree of chemical weathering, it is impossible to select a specific analytical level above which values might indicate the presence of silver deposits. For this reason, the analytical values have been grouped into ranges (see histograms), each range being represented by a different symbol on the map. Higher values may indicate a greater likelihood of silver deposits, but confidence levels are low for "single-element" anomalies and for results which are not supported by neighboring values.

REFERENCES CITED

- Coe, Bela, Jr., Nelson, W. H., Jones, D. L., Silberling, L. J., Dean, R. M., Morris, M. S., Lanphere, M. A., Smith, J. G., and Silberman, M. L., 1978, Reconnaissance geologic map and geochronology, Talkeetna Mountains quadrangle, northern part of Anchorage quadrangle, and southwest corner of Nealy quadrangle, Alaska: U.S. Geol. Survey open-file rept. 78-558-A, 62p.
- Grimes, D. J., and Marranzino, A. P., 1968, Direct-current arc and alternating-current spark emission spectrographic field methods for the semi-quantitative analysis of geologic materials: U.S. Geol. Survey Circ. 591, 6p.
- Miller, R. J., Cooley, E. F., O'Leary, R. M., Garmezy, Larry, Coe, Bela, Jr., Smith, T. E., and Cleveland, M. N., 1978, Analyses of geochemical samples from the Talkeetna Mountains quadrangle, Alaska: U.S. Geol. Survey open-file rept. 78-1052, 279 p.
- Ward, F. H., Nakagawa, H. M., Harms, T. F., and Van Sickle, G. H., 1969, Atomic-absorption methods of analysis useful in geochemical exploration: U.S. Geol. Survey Bull. 1289, 45 p.

MAP SHOWING GEOCHEMICAL DISTRIBUTION AND ABUNDANCE OF SILVER IN STREAM SEDIMENTS AND HEAVY MINERAL CONCENTRATES, TALKEETNA MOUNTAINS QUADRANGLE, ALASKA

by

This report is preliminary and has not been edited or reviewed for conformity with Geological Survey standards and nomenclature.