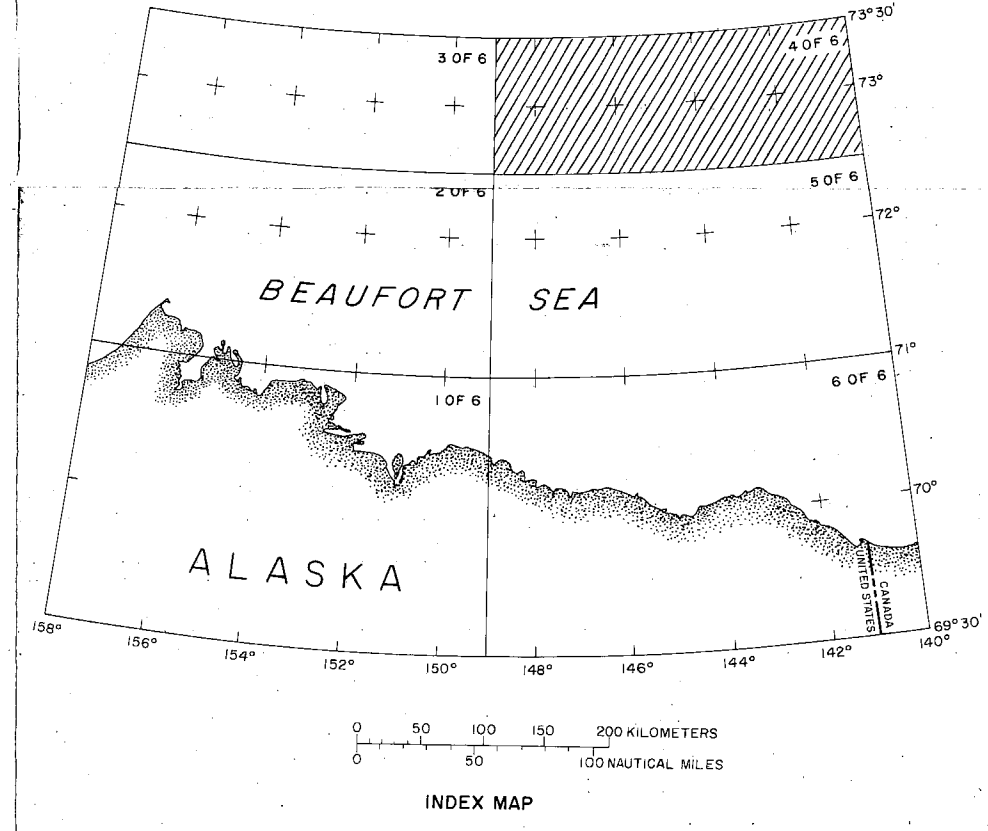


Note: For a discussion of the areal extent and quality of data, method of interpretation, and a listing of data sources see Greenberg et al., 1979, Bathymetric Map of the Continental Shelf, Slope, and Rise of the Beaufort Sea North of Alaska, U.S. Geological Survey Miscellaneous Geologic Investigation Map 1-1482 (in press).



BATHYMETRIC MAP OF THE CONTINENTAL SHELF, SLOPE, AND RISE OF THE BEAUFORT SEA NORTH OF ALASKA
 BY
 JONATHAN GREENBERG, PATRICK E. HART, AND ARTHUR GRANTZ
 1979

This map is preliminary and has not been edited or revised for conformity with U.S. Geological Survey standards and nomenclature.

Note: Not intended for navigation.

LEGEND

- Inferred
- Localized Depression
Hachures show direction of slope
- Localized High
Hachures show direction of slope

10, 30, 90, 150 Meters
 20, 40, 60, 80, 100 Meters
 300, 500 Meters
 200, 400 Meters
 Every 200 meters to 3600 meters