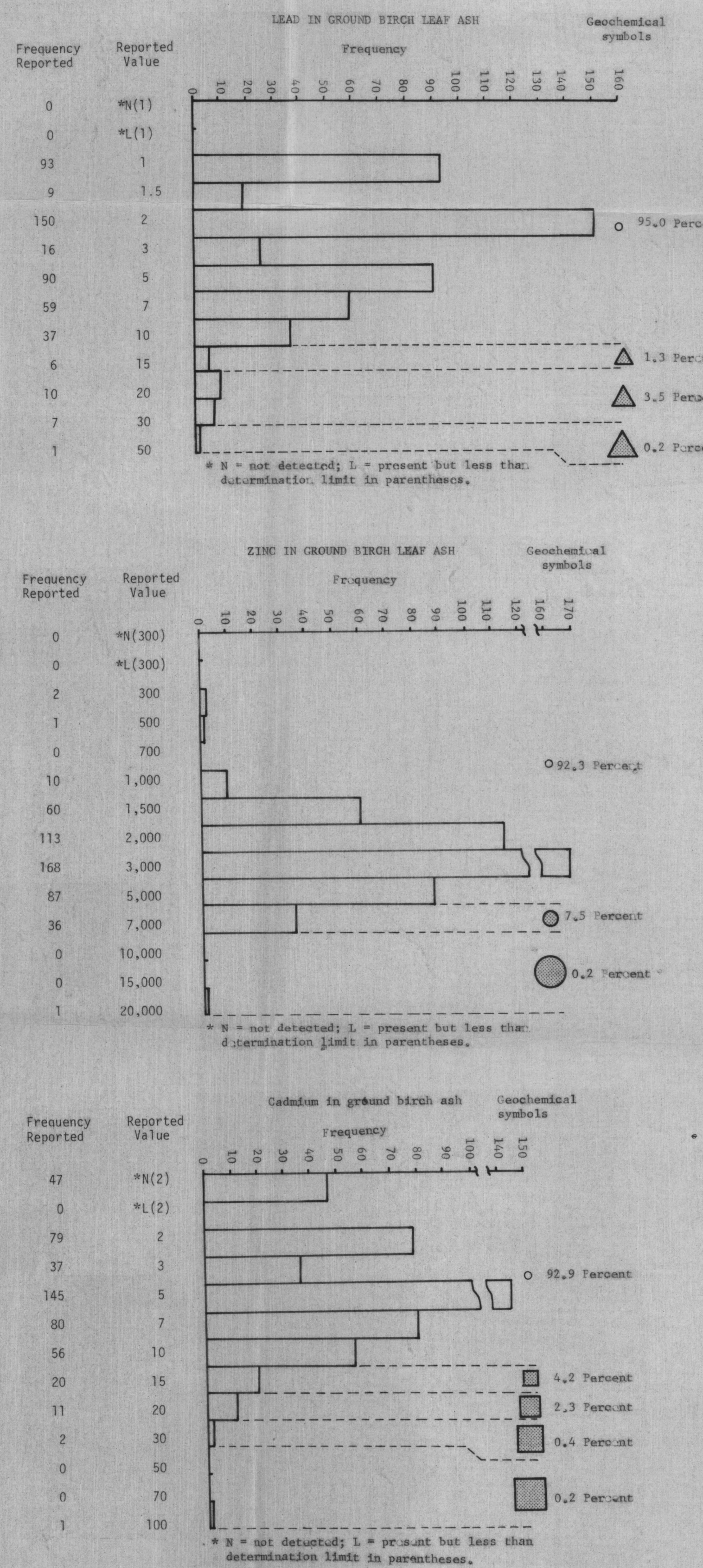
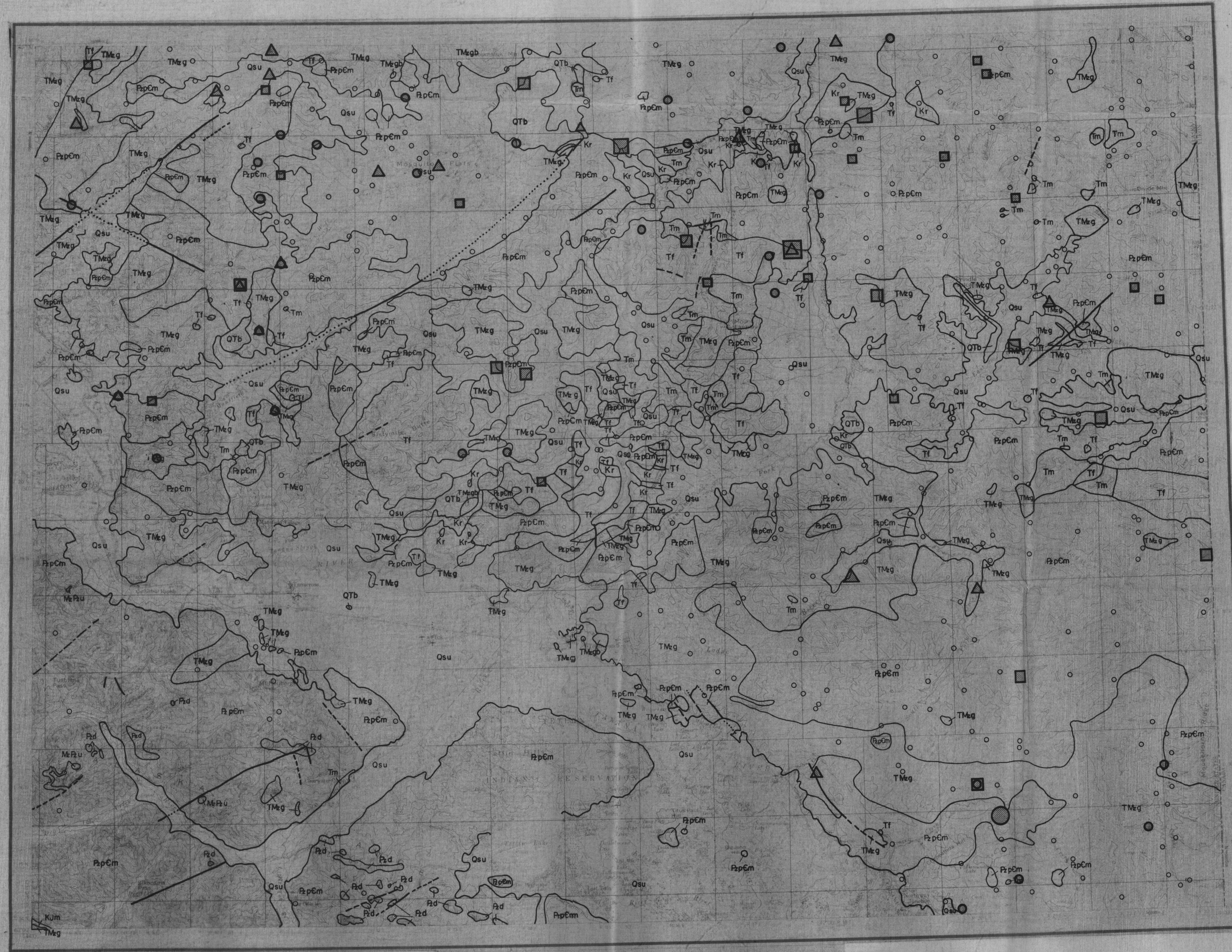


Topographic base from U.S. Geological Survey, 1956

Geology generalized from Foster, 1970;
geochemical sampling and analysis, 1976

BLACK SPRUCE



Topographic base from U.S. Geological Survey, 1956

Geology generalized from Foster, 1970;
geochemical sampling and analysis, 1976

GROUND BIRCH

DISCUSSION

DISTRIBUTION AND NATURE OF THE GEOCHEMICAL ANOMALIES

COLLECTION, PREPARATION, AND ANALYSIS OF SAMPLES

REFERENCES CITED

GEOCHEMICAL MAPS SHOWING THE DISTRIBUTION AND ABUNDANCE OF LEAD, ZINC, AND CADMIUM IN THE
ASH OF BLACK SPRUCE NEEDLES AND GROUND BIRCH LEAVES FROM THE TANACROSS QUADRANGLE, ALASKA

By
G. W. Day, G. C. Curtin, and R. B. Tripp
1979

EXPLANATION

Geology generalized from Foster (1970)

CORRELATION OF MAP UNITS

UNCONSOLIDATED DEPOSITS

SEDIMENTARY ROCKS

IGNEOUS AND METAMORPHIC ROCKS

UNCONSOLIDATED DEPOSITS

SEDIMENTARY ROCKS

IGNEOUS AND METAMORPHIC ROCKS

UNCONSOLIDATED DEPOSITS

SEDIMENTARY ROCKS

IGNEOUS AND METAMORPHIC ROCKS

UNCONSOLIDATED DEPOSITS

SEDIMENTARY ROCKS

IGNEOUS AND METAMORPHIC ROCKS

UNCONSOLIDATED DEPOSITS

SEDIMENTARY ROCKS

IGNEOUS AND METAMORPHIC ROCKS

UNCONSOLIDATED DEPOSITS

SEDIMENTARY ROCKS

IGNEOUS AND METAMORPHIC ROCKS

UNCONSOLIDATED DEPOSITS

SEDIMENTARY ROCKS

IGNEOUS AND METAMORPHIC ROCKS

UNCONSOLIDATED DEPOSITS

SEDIMENTARY ROCKS

IGNEOUS AND METAMORPHIC ROCKS

UNCONSOLIDATED DEPOSITS

SEDIMENTARY ROCKS

IGNEOUS AND METAMORPHIC ROCKS

UNCONSOLIDATED DEPOSITS

SEDIMENTARY ROCKS

IGNEOUS AND METAMORPHIC ROCKS

UNCONSOLIDATED DEPOSITS

SEDIMENTARY ROCKS

IGNEOUS AND METAMORPHIC ROCKS

UNCONSOLIDATED DEPOSITS

SEDIMENTARY ROCKS

IGNEOUS AND METAMORPHIC ROCKS

UNCONSOLIDATED DEPOSITS

SEDIMENTARY ROCKS

IGNEOUS AND METAMORPHIC ROCKS

UNCONSOLIDATED DEPOSITS

SEDIMENTARY ROCKS

IGNEOUS AND METAMORPHIC ROCKS

UNCONSOLIDATED DEPOSITS

SEDIMENTARY ROCKS

IGNEOUS AND METAMORPHIC ROCKS

UNCONSOLIDATED DEPOSITS

SEDIMENTARY ROCKS

IGNEOUS AND METAMORPHIC ROCKS

UNCONSOLIDATED DEPOSITS

SEDIMENTARY ROCKS

IGNEOUS AND METAMORPHIC ROCKS

UNCONSOLIDATED DEPOSITS

SEDIMENTARY ROCKS

IGNEOUS AND METAMORPHIC ROCKS

UNCONSOLIDATED DEPOSITS

SEDIMENTARY ROCKS

IGNEOUS AND METAMORPHIC ROCKS

UNCONSOLIDATED DEPOSITS

SEDIMENTARY ROCKS

IGNEOUS AND METAMORPHIC ROCKS