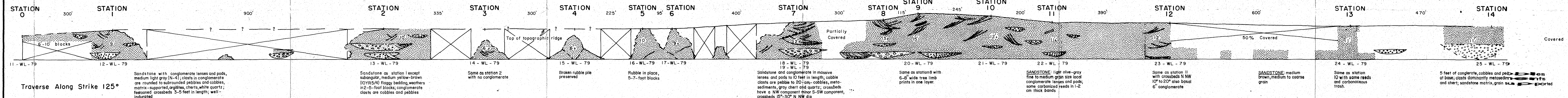


KAVIK TRAVERSE

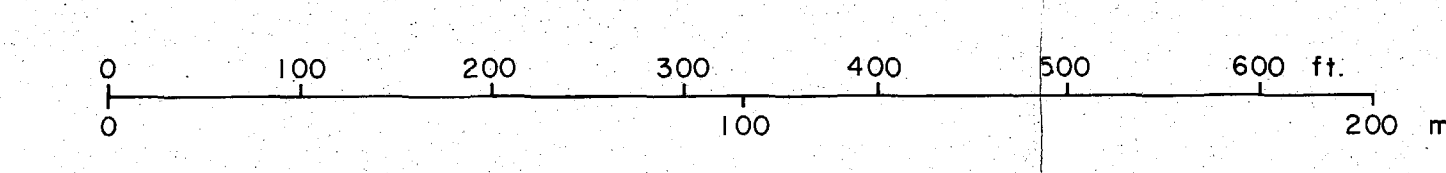
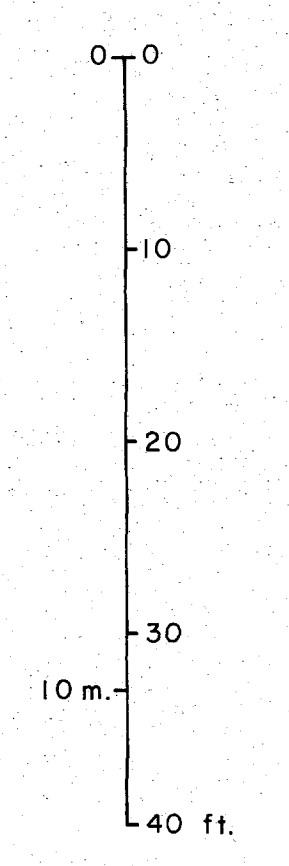
Sect. 19, T.3 N., R. 21 E.
 Measured by: I. F. Palmer
 W. M. Lyle
 JULY 1979
 MAP LOCATION NO. 10

NW

SE



Traverse Along Strike 125°



This report has not been edited for conformity with U.S. Geological Survey editorial standards or stratigraphic nomenclature.

Sample Number	LABORATORY ANALYSES	
	Porosity (%)	Permeability (mD)
11 - WL - 79	16.2	43
12 - WL - 79	15.2	34
13 - WL - 79	17.6	56
14 - WL - 79	16	114
15 - WL - 79	17.3	39
16 - WL - 79	16.4	38
17 - WL - 79	16.3	38
18 - WL - 79	18.1	308
19 - WL - 79	No Data*	No Data*
20 - WL - 79	18.5	339
21 - WL - 79	18.6	267
22 - WL - 79	16.9	230
23 - WL - 79	17.3	80
24 - WL - 79	20.8	2731
25 - WL - 79	16.8	3500
* SAMPLE LOST	AVERAGE	17.28
		520.5