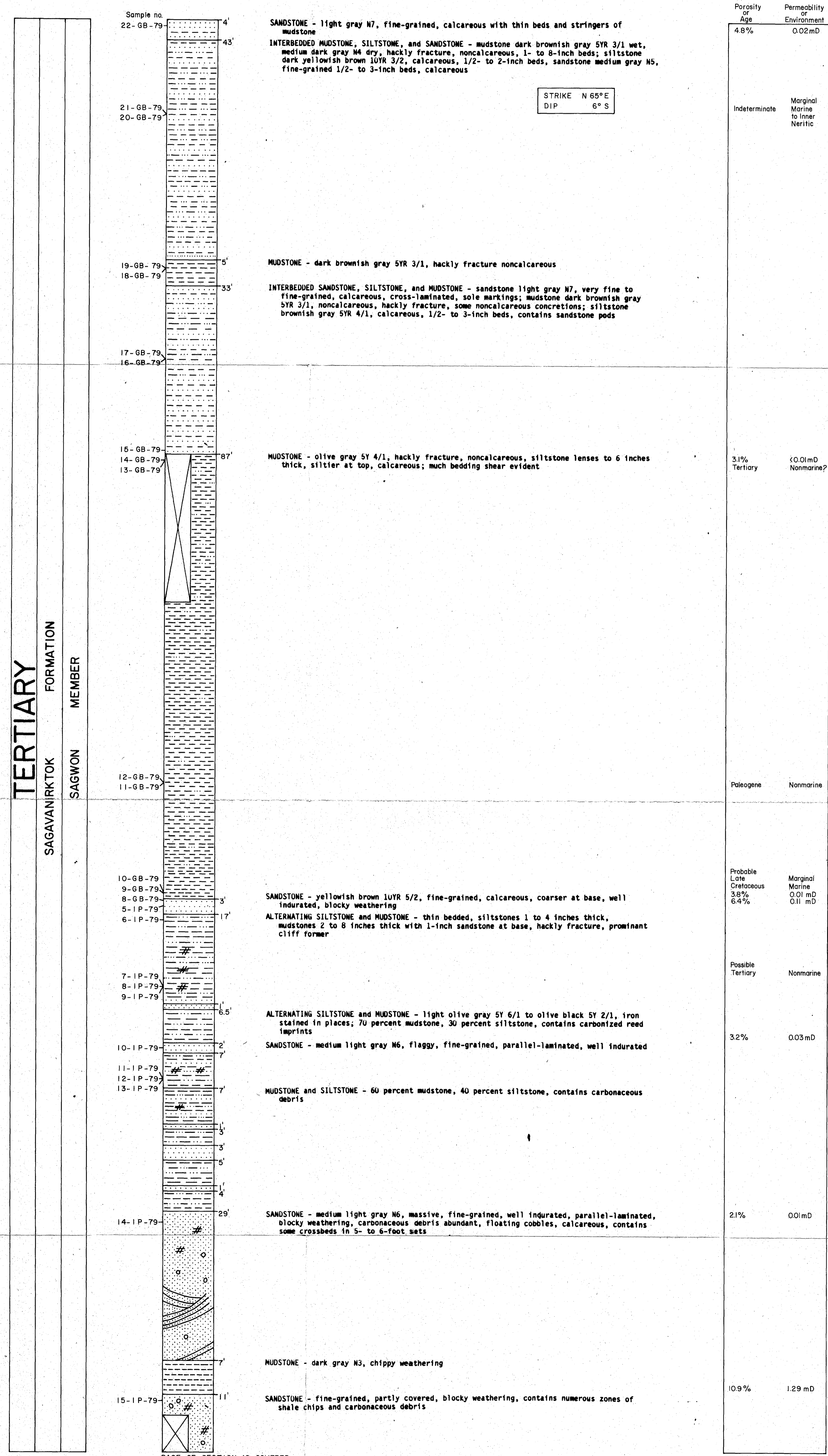


CANNING RIVER STRATIGRAPHIC SECTION

Sec. 30, T. 3 N., R. 24 E.
MAP LOCATION NO. 13

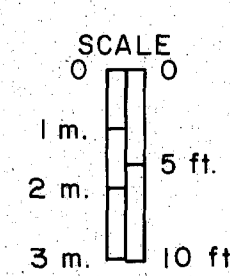
JULY 1979

MEASURED BY: J. G. BOLM
W. M. LYLE
I. F. PALMER



TERTIARY
SAGAVANIRKTOK FORMATION
MEMBER
SAGWON

BASE OF SECTION IS COVERED - SECTION TERMINATES AT ELEVATION 740'. BEARING TO 3287' PEAK 132°.



This report has not been edited for conformity with U.S. Geological Survey editorial standards or stratigraphic nomenclature.