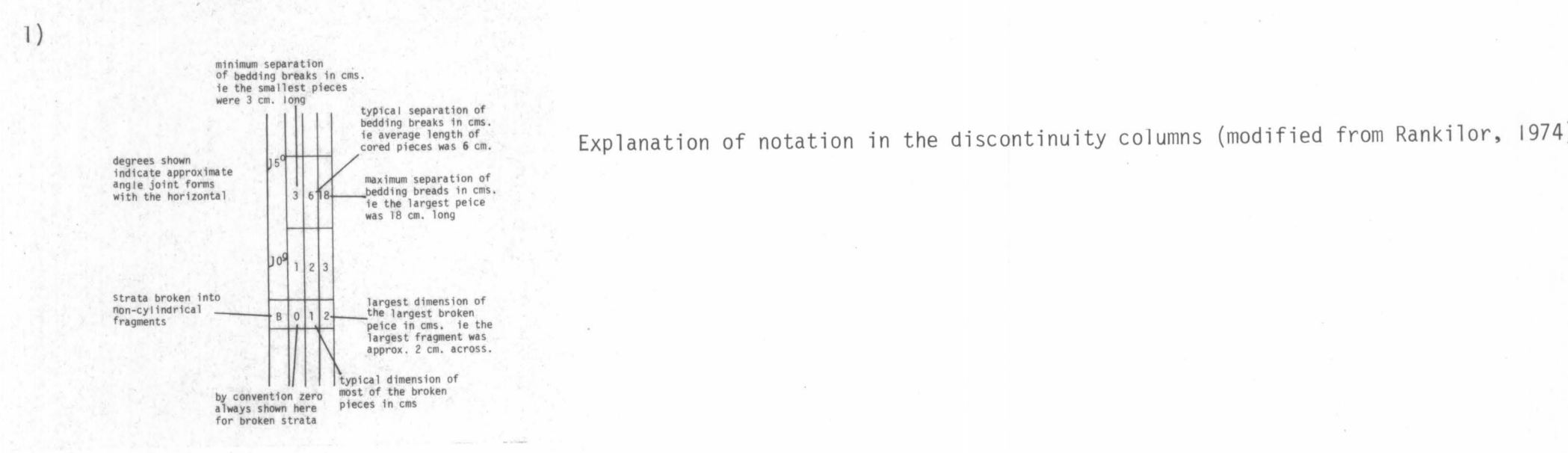
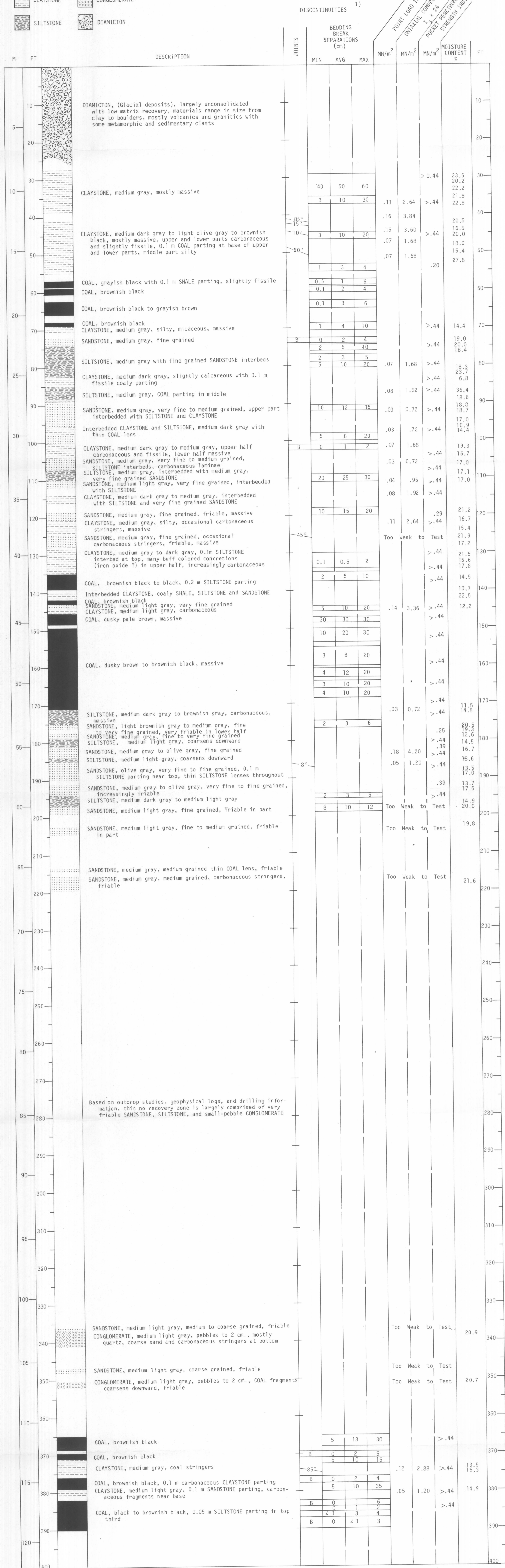
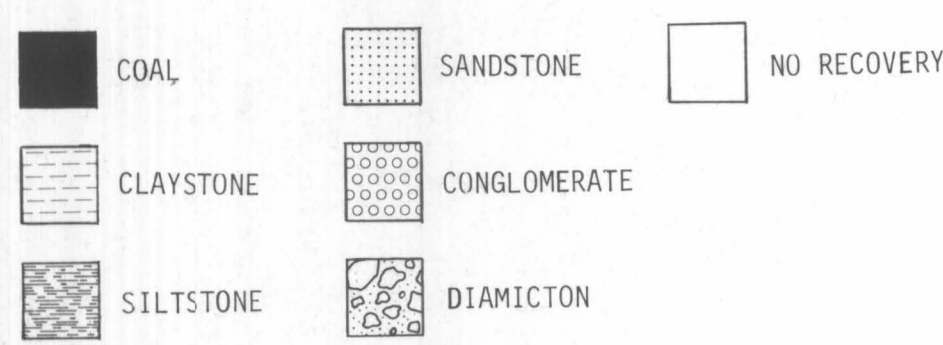


HOLE NO: 1 C-79
 LOCATION: Center of NE 1/4 of Section 23, T 14 N, R 14 W, Tyonek (B-5) Quadrangle, Alaska
 COLLAR ELEVATION: 580 meters

LITHOLOGIC SYMBOLS



1) Explanation of notation in the discontinuity columns (modified from Rankinor, 1974)

2) Point Load tests were diametral (Broch and Franklin, 1972) and approximately parallel to bedding