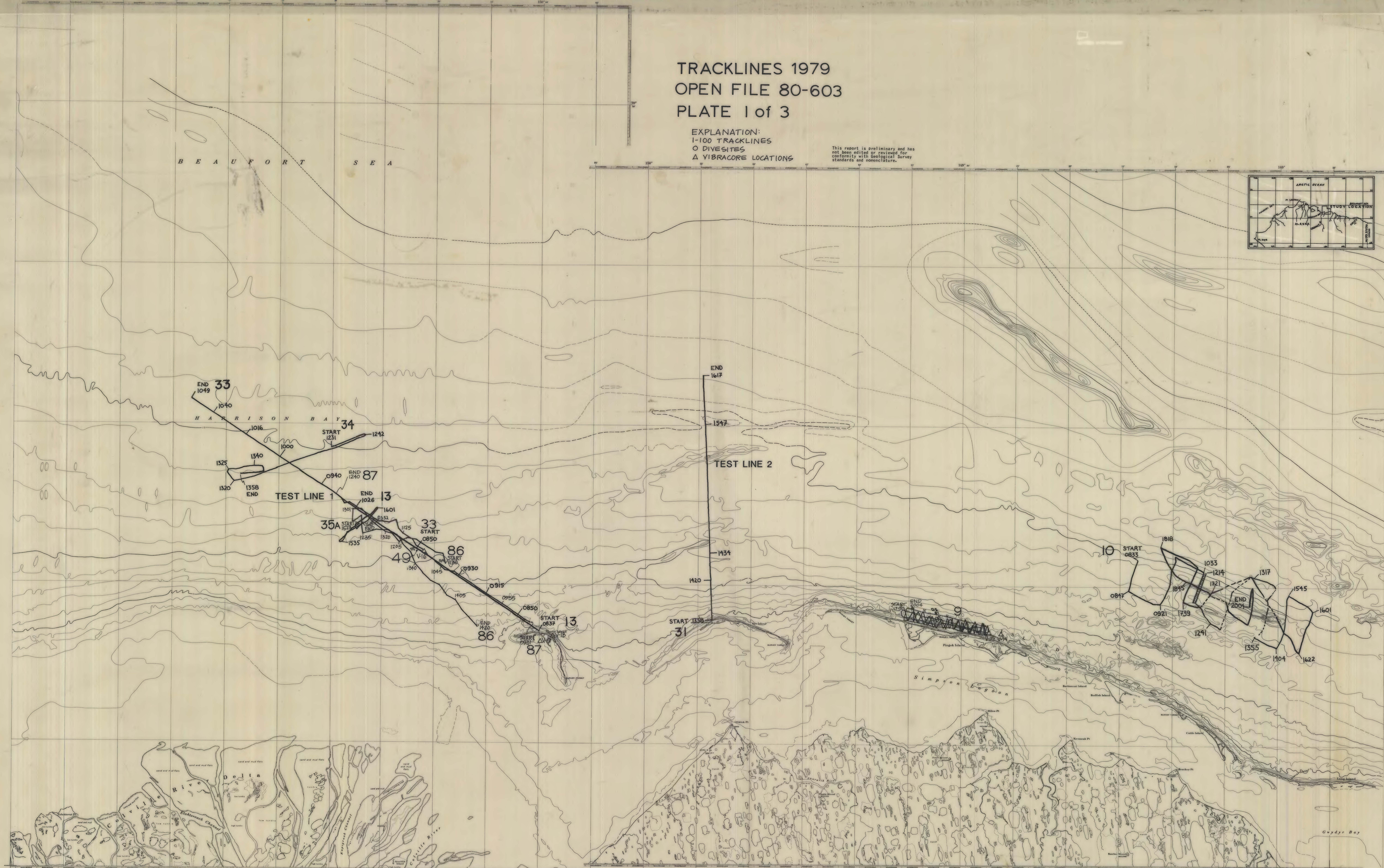
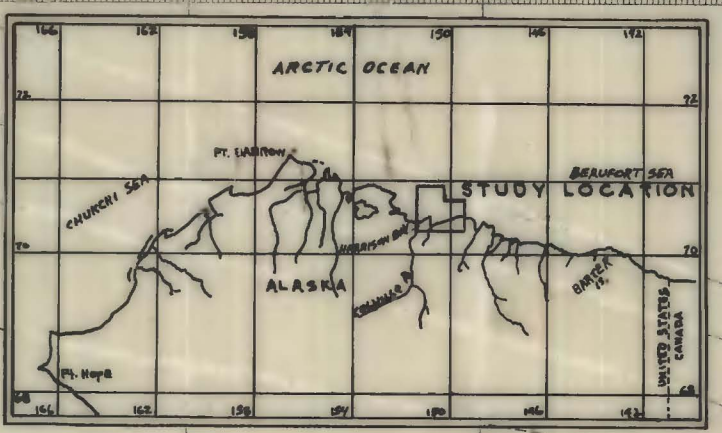


TRACKLINES 1979  
 OPEN FILE 80-603  
 PLATE 1 of 3

EXPLANATION:  
 1-100 TRACKLINES  
 O DIVESITES  
 Δ VIBRACORE LOCATIONS

This report is preliminary and has not been edited or reviewed for conformity with Geological Survey standards and nomenclature.

B E A U F O R T S E A



MERCATOR MAP PROJECTION  
 1:80,000

SCALE 1:80,000

U.S.G.S. MARINE GEOLOGIC STUDIES IN THE BEAUFORT SEA, ALASKA, 1979...by Peter Barnes et al., 1980

Base from C.&G.S. Charts, 1:50,000 series; 9467, 3rd Ed. June 10/68; 9468, 3rd Ed. June 24/68; 9469, 3rd Ed. June 10/68; 9470, 3rd Ed. Aug 12/68; 9471, 3rd Ed. June 10/68; 9472, 3rd Ed. June 10/68; 9473, 3rd Ed. June 24/68; Alaska - Arctic Coast, Compiled, Base Map Unit, Menlo Park, 4-2-71 (3-35) feet.