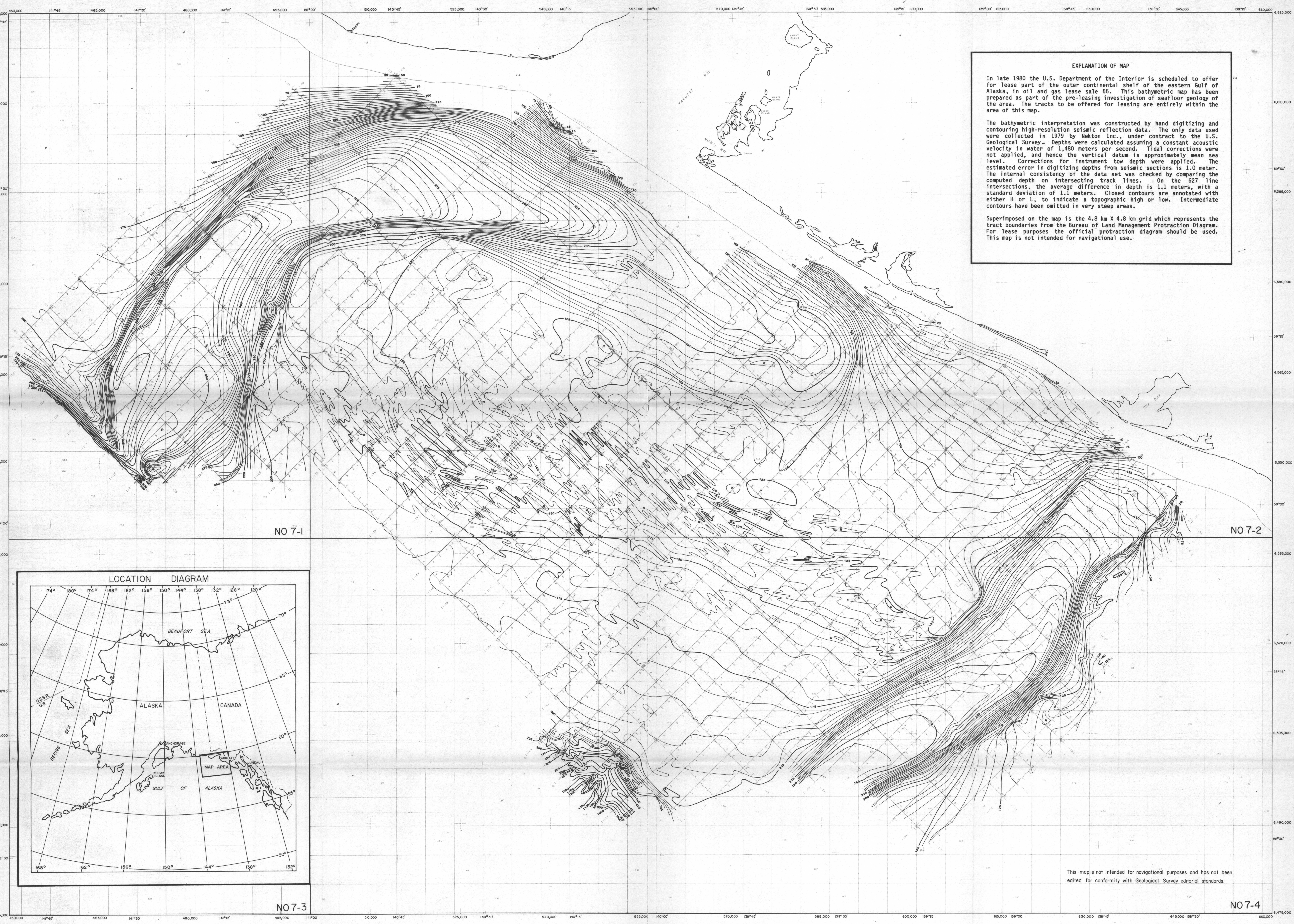


UTM ZONE 7

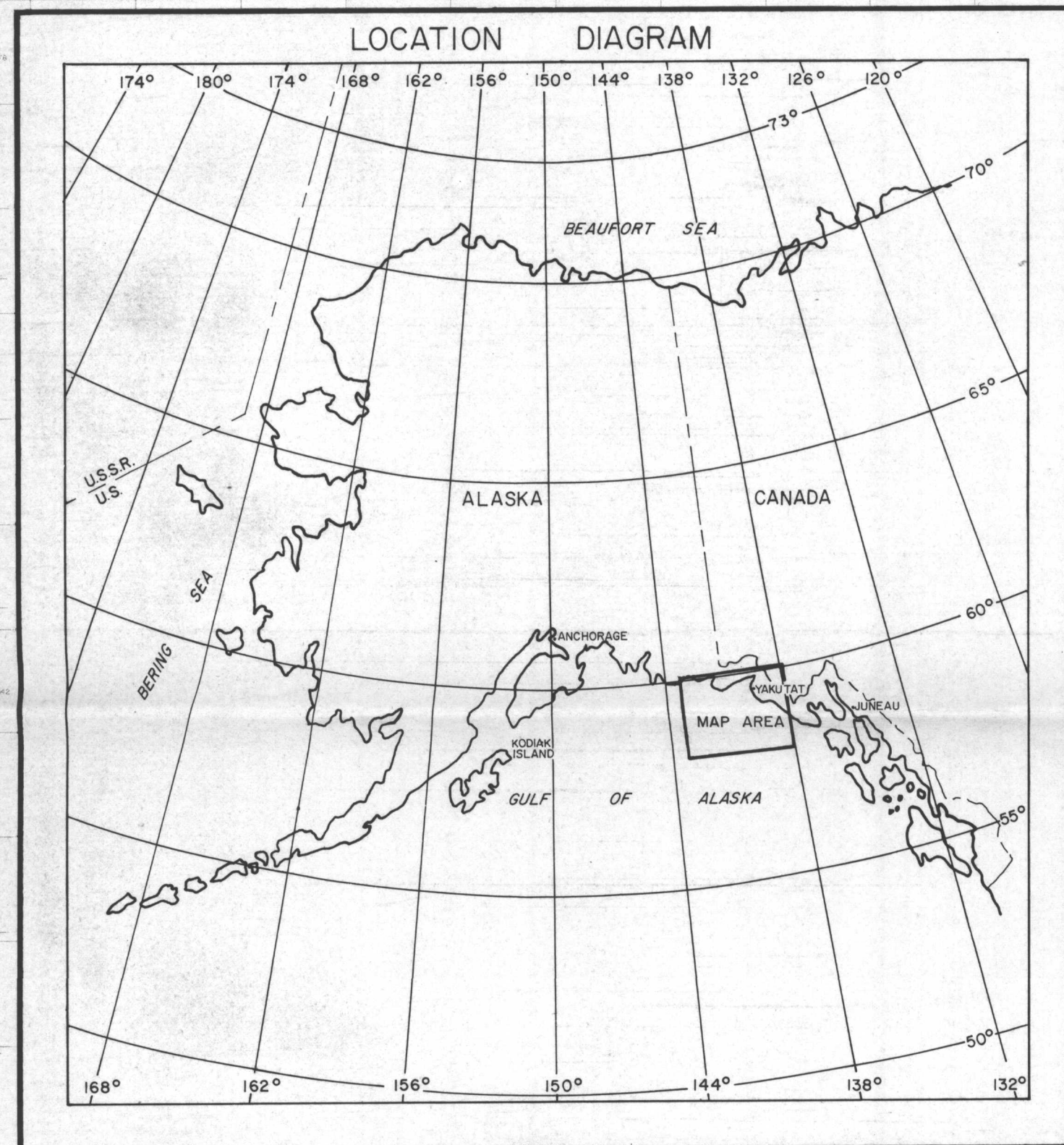


EXPLANATION OF MAP

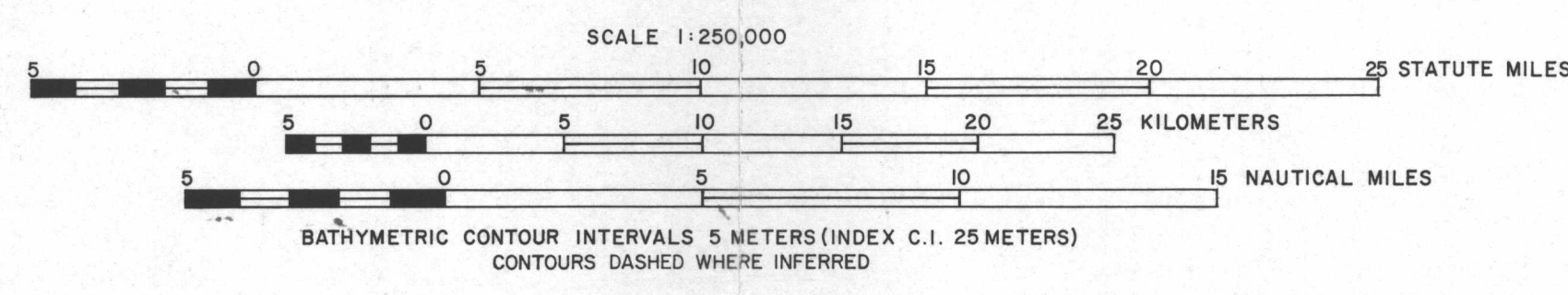
In late 1980 the U.S. Department of the Interior is scheduled to offer for lease part of the outer continental shelf of the eastern Gulf of Alaska, in oil and gas lease sale 55. This bathymetric map has been prepared as part of the pre-leasing investigation of seafloor geology of the area. The tracts to be offered for leasing are entirely within the area of this map.

The bathymetric interpretation was constructed by hand digitizing and contouring high-resolution seismic reflection data. The only data used were collected in 1979 by Mekton Inc., under contract to the U.S. Geological Survey. Depths were calculated assuming a constant acoustic velocity in water of 1,480 meters per second. Tidal corrections were not applied, and hence the vertical datum is approximately mean sea level. Corrections for instrument tow depth were applied. The estimated error in digitizing depths from seismic sections is 1.0 meter. The internal consistency of the data set was checked by comparing the computed depth on intersecting track lines. On the 627 line intersections, the average difference in depth is 1.1 meters, with a standard deviation of 1.1 meters. Closed contours are annotated with either H or L, to indicate a topographic high or low. Intermediate contours have been omitted in very steep areas.

Superimposed on the map is the 4.8 km X 4.8 km grid which represents the tract boundaries from the Bureau of Land Management Protraction Diagram. For lease purposes the official protraction diagram should be used. This map is not intended for navigational use.



SOURCE OF SHORELINE FROM U.S.G.S.
YAKUTAT QUADRANGLE (1:250,000)
PUBLISHED IN 1959 WITH MINOR
REVISIONS IN 1970.



This map is not intended for navigational purposes and has not been edited for conformity with Geological Survey editorial standards.

BATHYMETRIC MAP OF THE OUTER CONTINENTAL SHELF BETWEEN YAKUTAT BAY AND DRY BAY, EASTERN GULF OF ALASKA
By Glenn P. Thrasher and Bruce W. Turner
1980

MAP PROJECTION UTM, CLARKE
1866 SPHEROID, ZONE 7.