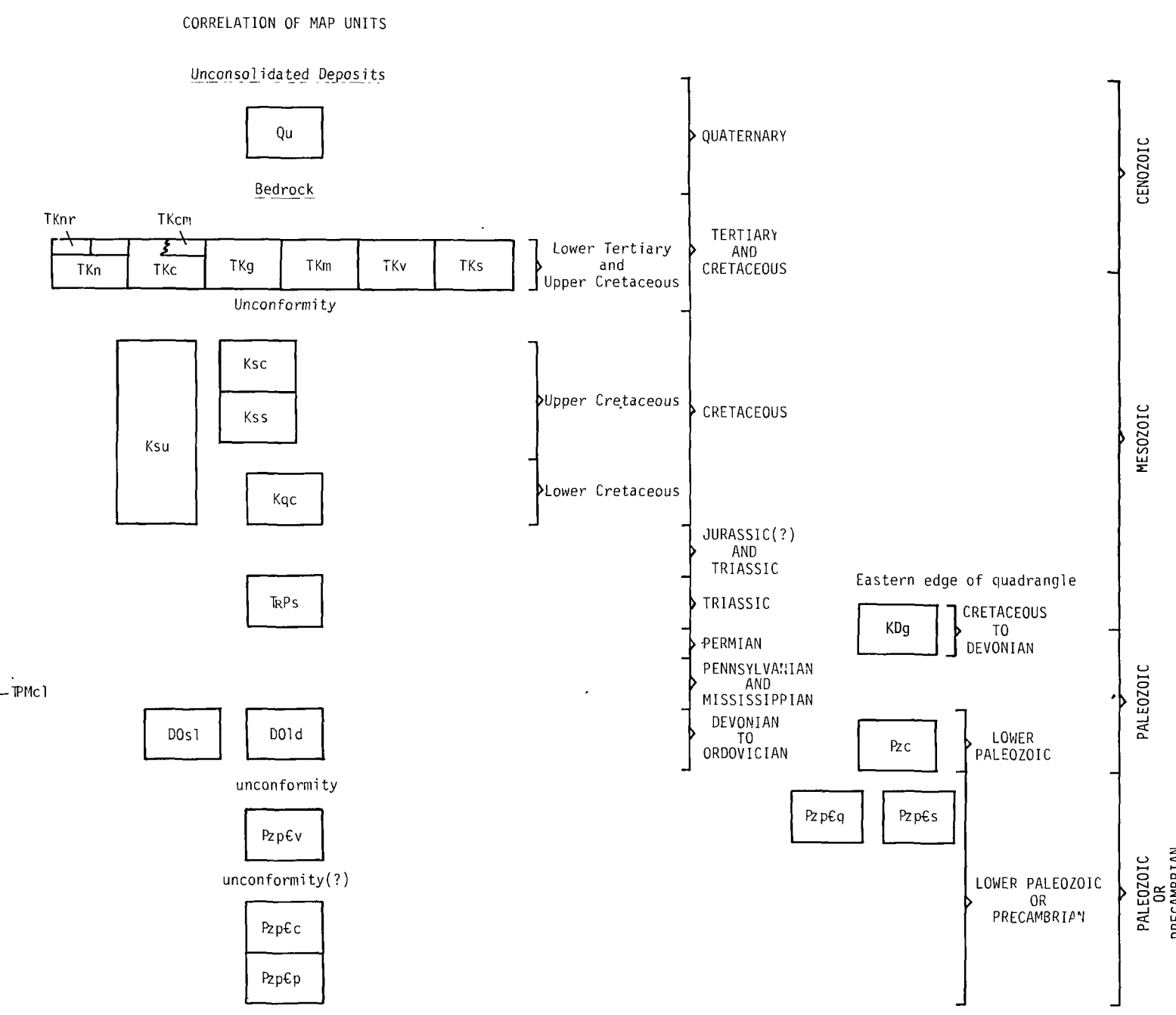
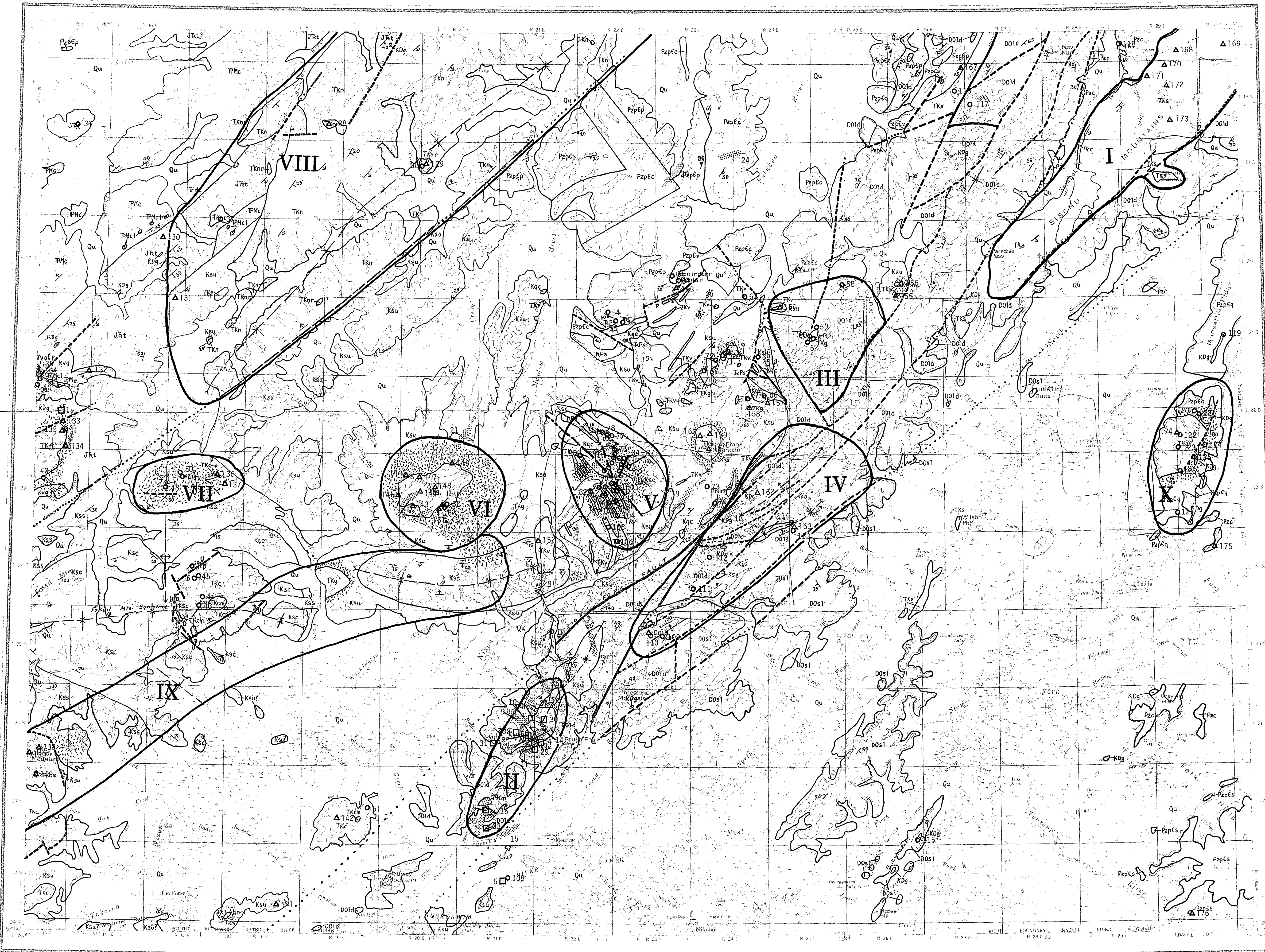


MEDFRA

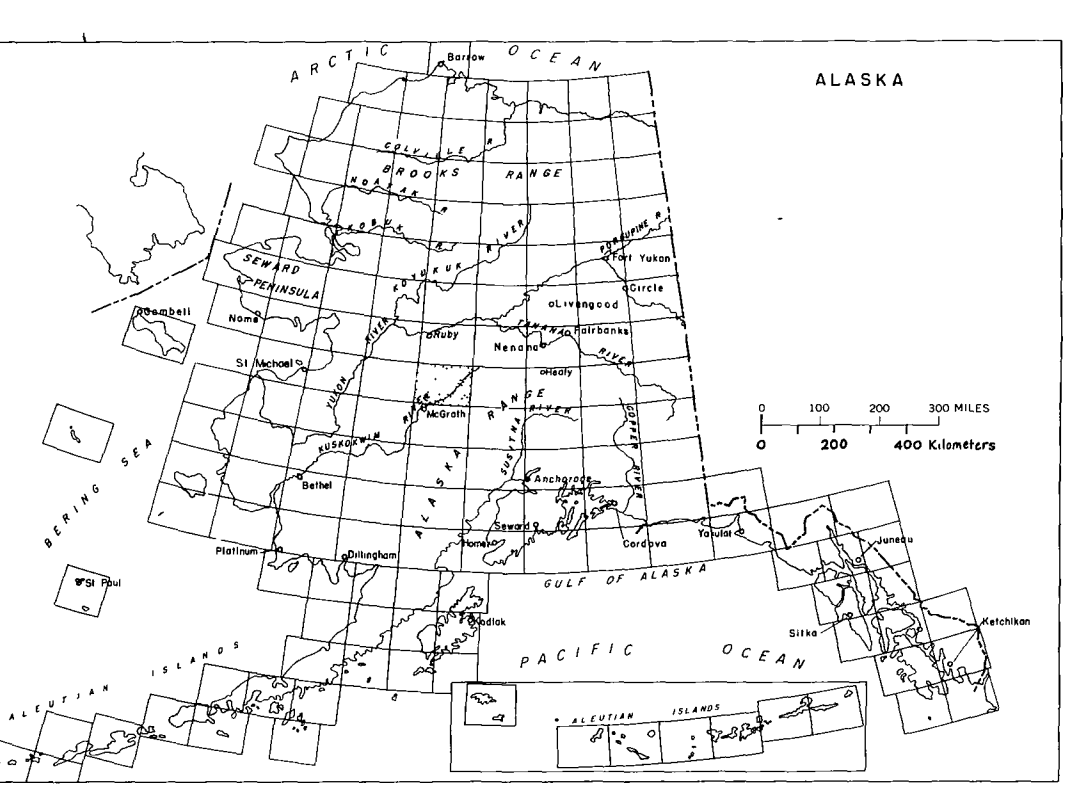
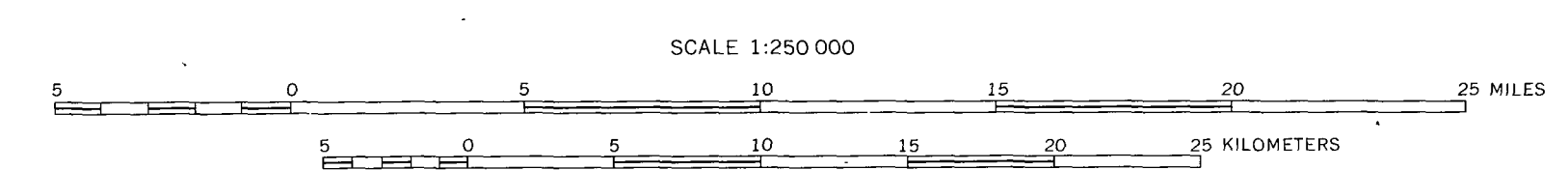
Explanation for Generalized Geologic Map



DESCRIPTION OF MAP UNITS

Qu	UNDIFFERENTIATED SURFICIAL DEPOSITS
TKn	VOLCANIC ROCKS OF THE NOMINNA RIVER AREA—Chiefly trachyandesite, basaltic andesite, and basalt flows. TKn—Rhyolite domes, tuffs, and breccia
TKc	MAFIC TO INTERMEDIATE VOLCANIC-PLUTONIC COMPLEXES—Altered basalt, andesite, and trachyandesite flows and hypabyssal intrusive bodies. TKc—Small bodies of monzonite, quartz monzonite, and granodiorite
TKg	GRANITE
TKn	MONZONITE
TKv	VOLCANIC ROCKS OF NIXON FORM-UPPER SULKINA RIVER AREA—rhyolite, dacite, and trachyandesite sills, dikes, flows, and plugs
TKs	VOLCANIC ROCKS OF THE SISSON MOUNTAINS—rhyolite and dacite flows and domes
Kdg	GABBRO
Ksu	UNDIFFERENTIATED SHALE, SILTSTONE, AND SANDSTONE
Ksc	NONMARINE SANDSTONE AND QUARTZ-CHERT CONGLOMERATE
Kss	MARINE SANDSTONE, SILTSTONE, AND SHALE
Kqc	QUARTZ-CARBONATE SANDSTONE AND PEBBLY MUDSTONE
Kvg	VOLCANIC GRAYWACKE AND CONGLOMERATE
Jbit	CHERTY TUFF, CRYSTAL AND LITHIC TUFFS, AND VOLCANIC BRECCIA
Dps	SANDSTONE, SANDY LIMESTONE, SPIGULITE, AND CONGLOMERATE
Dpc	CHERT AND LIMESTONE—Chiefly radiolarian chert. Dpc1—limestone.
Dds1	SHALY LIMESTONE
Dds	LIMESTONE AND DOLOMITE
Ppc	CHERT AND PHYLLITE
Ppe	QUARTZITE, GRIT, AND ARGILLITE
PpE	SHEARED GRIT, QUARTZITE, AND QUARTZ-MICA SCHIST
PpEv	METAVOLCANIC ROCKS—Metarhyolite and dacite
PpEc	GALC-SCHIST
PpEp	PELLETIC SCHIST

Base generalized geologic map of the Medfra Quadrangle, Alaska and U.S. Geological Survey 1:250,000 Alaska Topographic Series: Medfra, 1959.



MINERAL RESOURCE ASSESSMENT MAP OF THE
MEDFRA QUADRANGLE, ALASKA

by
W.W. Patton, Jr. and E. J. Moll

1983

Explanation for Mineral Resources Map

- Location of stream placer showing general location on stream drainage
- Location of lode claim or mine
- Occurrence of sulfides and other indicators of mineralization
- Location of bedrock samples containing geochemical anomalies, but no visible mineralization
- Areas considered favorable for finding undiscovered mineral deposits

- GEOLOGIC SYMBOLS
- Contact - Includes approximately located, inferred, and indefinite
 - Fault - Dashed where approximately located, short dashed where inferred, dotted where concealed, U, upstream side; D, downstream side
 - Anticline - Showing direction of plunge
 - Syncline - Showing direction of plunge
 - Strike and dip of beds. May include overturned beds
 - Strike of vertical beds
 - Horizontal beds
 - Strike and dip of beds based on photointerpretation or distant observation
 - Strike and dip of foliation
 - Zone of hornfels

Contact between PpEc and PpEp mapped in part based on interpretation of aeromagnetic data (see Patton and others, 1982, Open-File Report 80-811G).