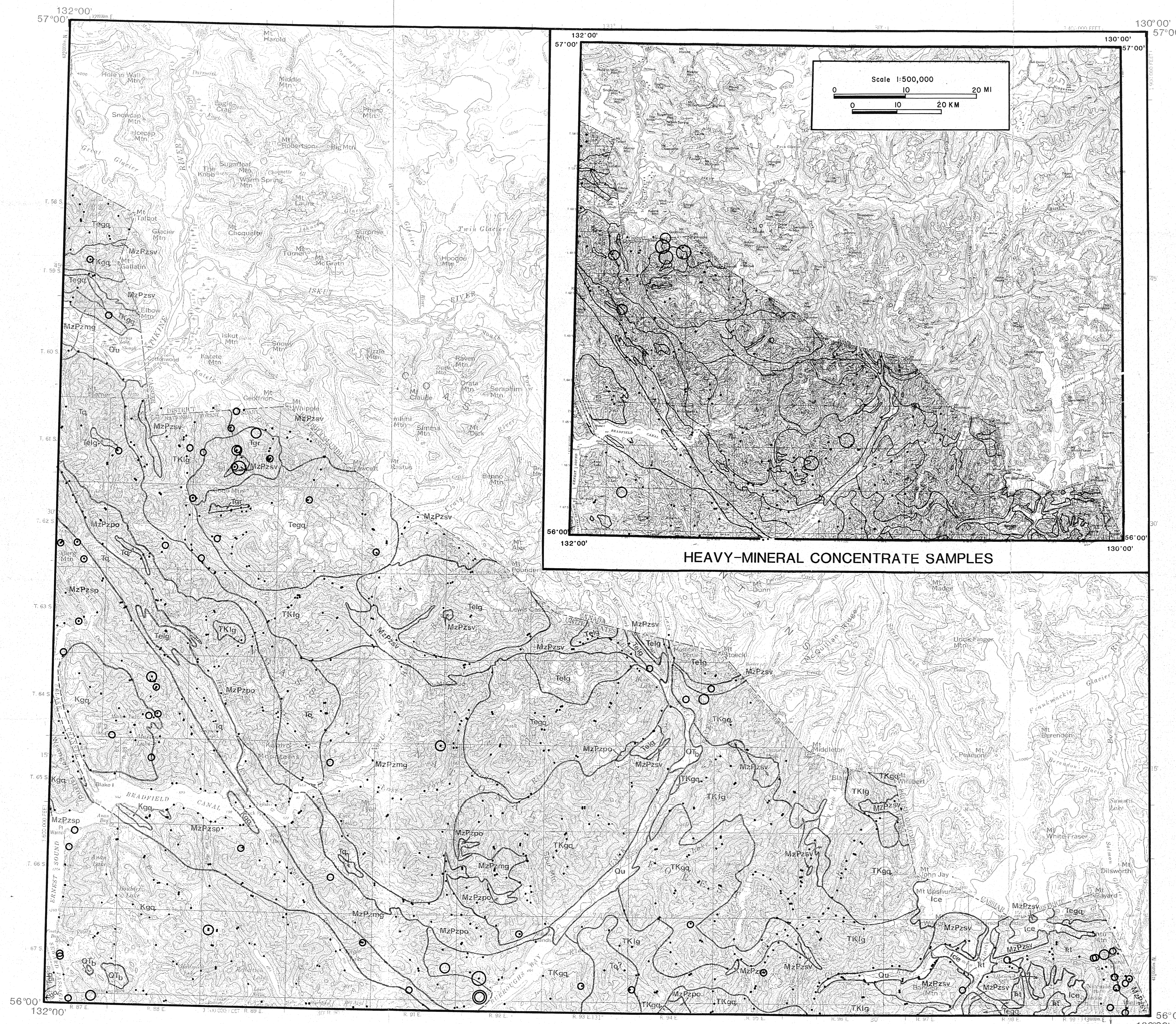


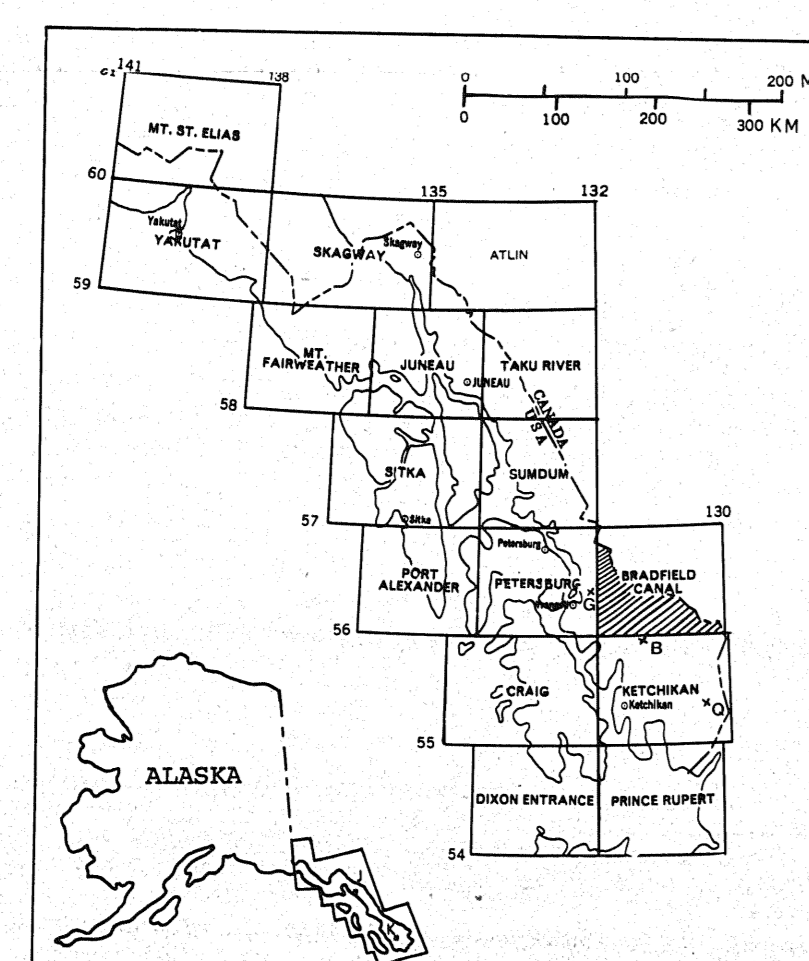
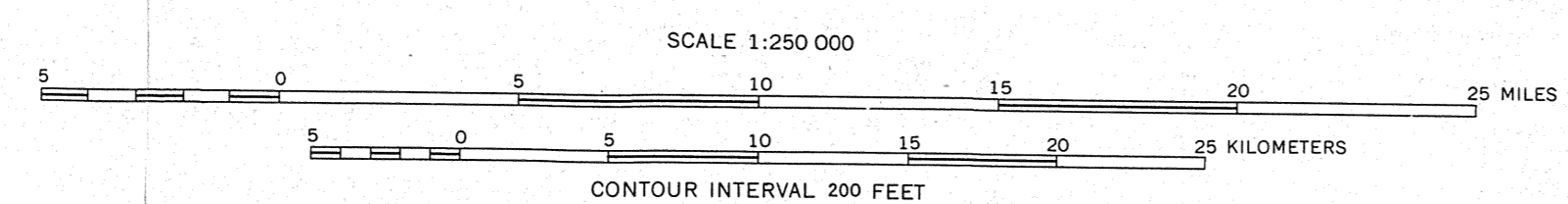
MOLYBDENUM IN STREAM SEDIMENTS
(spectrographic-determinations)



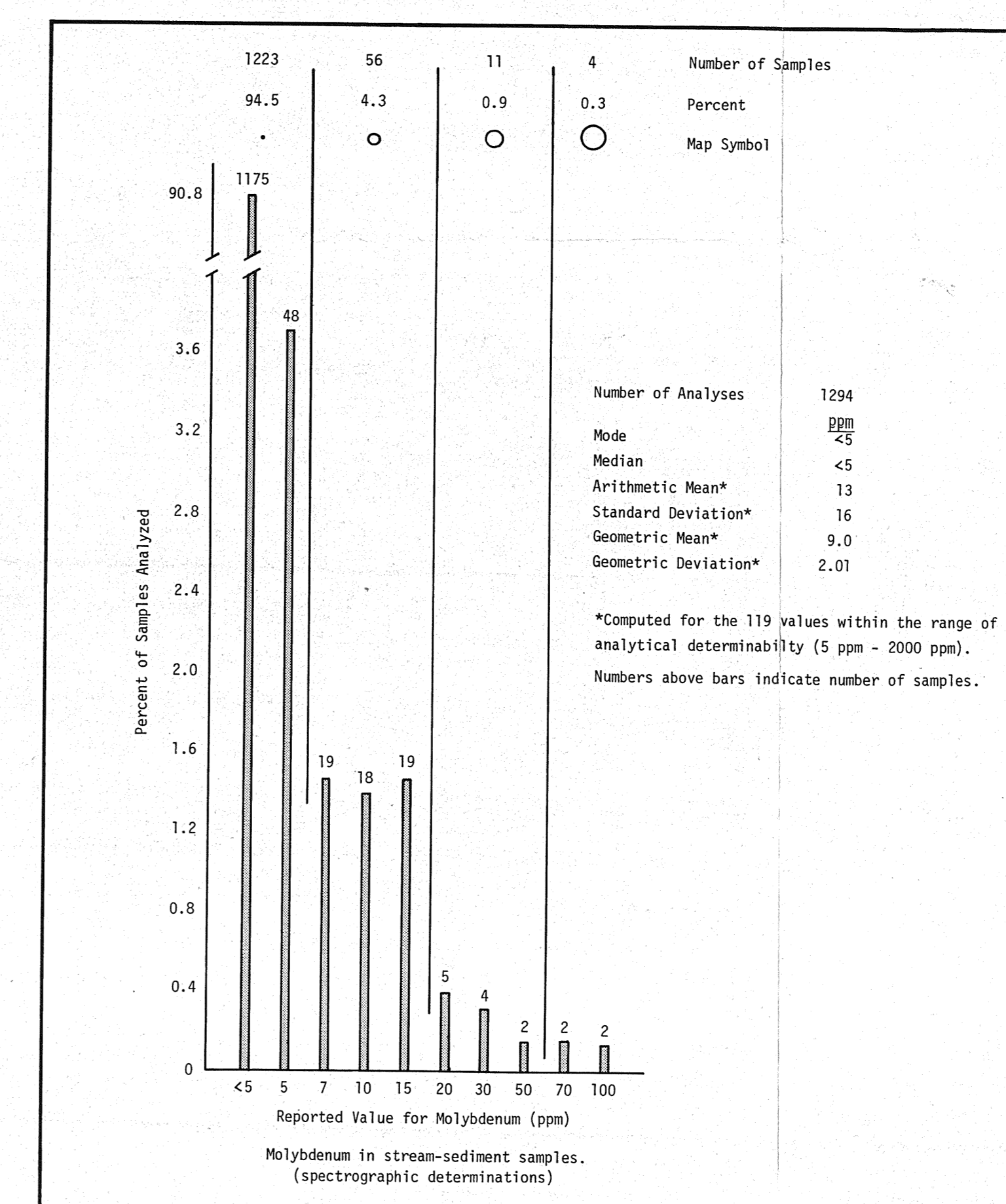
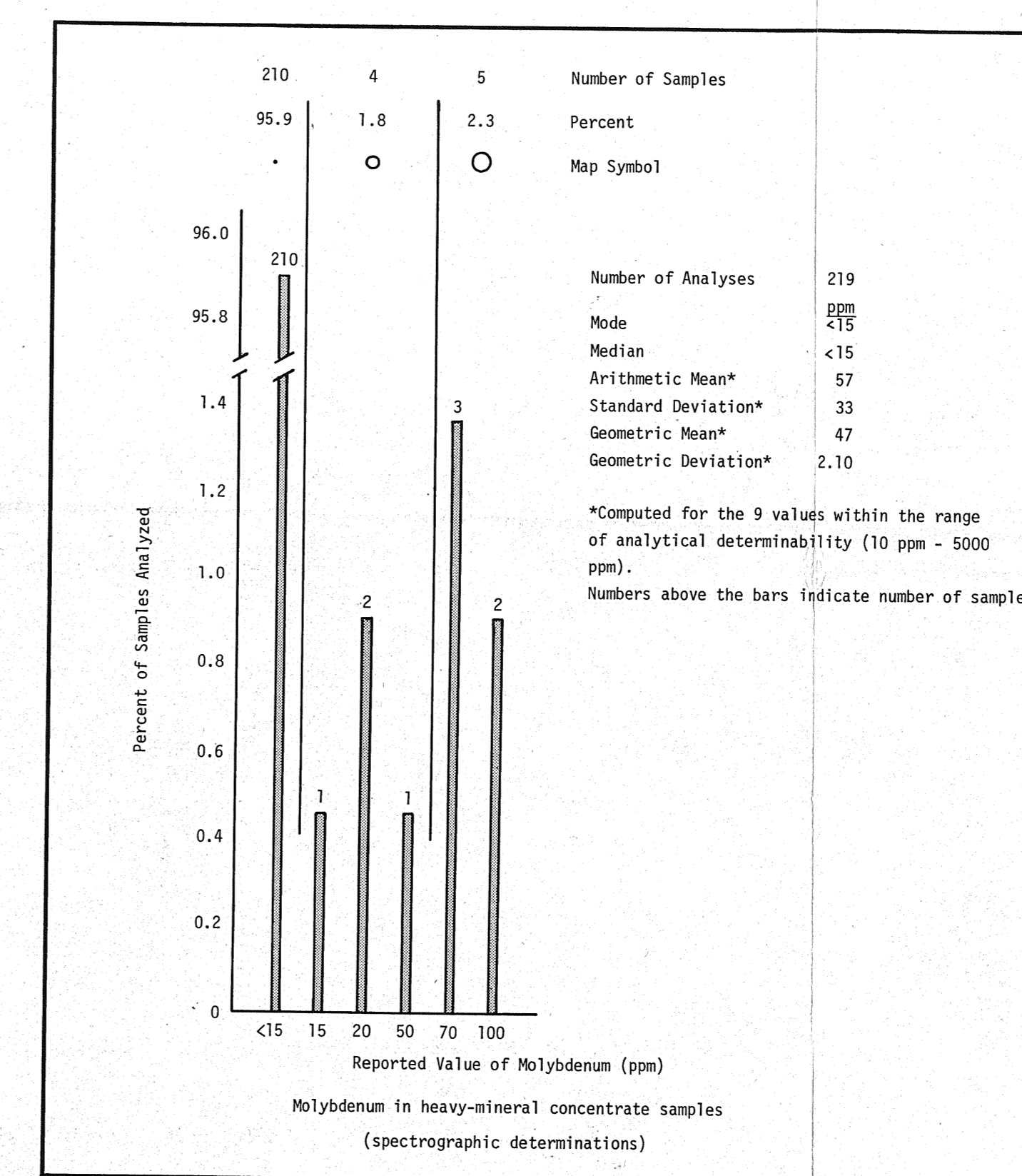
HEAVY-MINERAL CONCENTRATE SAMPLES

STREAM-SEDIMENT SAMPLES

Geology by H. C. Berg, D. A. Brew, A. L. Clark, W. H. Condon, J. E. Decker, M. F. Diggles, G. C. Dunne, R. L. Elliott, J. D. Gallinatti, M. H. Hendrick, S. M. Kari, R. D. Koch, M. L. Miller-Hoare, R. P. Morrell, J. G. Smith, and R. A. Sonnevil, 1968-1979.



- Unit Descriptions
- Qu UNCONSOLIDATED DEPOSITS, UNDIVIDED (Quaternary)
 - Qtz BASALT (Quaternary and Tertiary)
 - Tp ALKALI-FELDSPAR GRANITE WITH ASSOCIATED QUARTZ-PORPHYRITIC RHYOLITE DICES AND FLOCCETS (Miocene)
 - Tp Bi BIOTITE-PYROXENE GABBRO, LOCALLY CONTAINS HORNBLende AND/OR OLIVINE (Miocene)
 - Tq LEUCOCRATIC QUARTZ MONZONITE AND GRANODIORITE (Eocene)
 - Tqns GRANODIORITE AND QUARTZ DIORITE (Eocene)
 - Ts QUARTZ DIORITE (Eocene or Paleocene)
 - Tkq LEUCOCRATIC QUARTZ MONZONITE AND GRANODIORITE (Tertiary and/or Cretaceous)
 - Tkqs GRANODIORITE AND QUARTZ DIORITE (Tertiary and/or Cretaceous)
 - Kqs BIOTITE-HORNBLende QUARTZ DIORITE, PLAGIOCLASE-PORPHYRITIC BIOTITE GRANODIORITE/QUARTZ DIORITE, BOTH LOCALLY CONTAIN GNEISS AND/OR EPIDOTE (Cretaceous)
 - Tt TEXAS CREEK GRANODIORITE (Triassic)
 - Mpzm MIDWATITE AND ORTHOGNEISS, WITH LESSER PARAGNEISS (Mesozoic and/or Paleozoic)
 - Mpzo PARAGNEISS AND ORTHOGNEISS, WITH LESSER AMPHIBOLITE AND MARBLE (Mesozoic and/or Paleozoic)
 - Mpzs SOLEST AND PARAGNEISS, WITH LESSER AMPHIBOLITE AND MARBLE (Mesozoic and/or Paleozoic)
 - Mpzs Met METASEDIMENTARY AND LESSER METAVOLCANIC ROCKS, WITH LOCAL MARBLE (Mesozoic and/or Paleozoic)



MAPS SHOWING DISTRIBUTION AND ABUNDANCE OF MOLYBDENUM IN GEOCHEMICAL SAMPLES FROM THE BRADFIELD CANAL QUADRANGLE, SOUTHEASTERN ALASKA

by

R. D. KOCH AND R. L. ELLIOTT

1981

This report is preliminary and has not been reviewed for conformity with Geological Survey editorial standards and stratigraphic nomenclature.