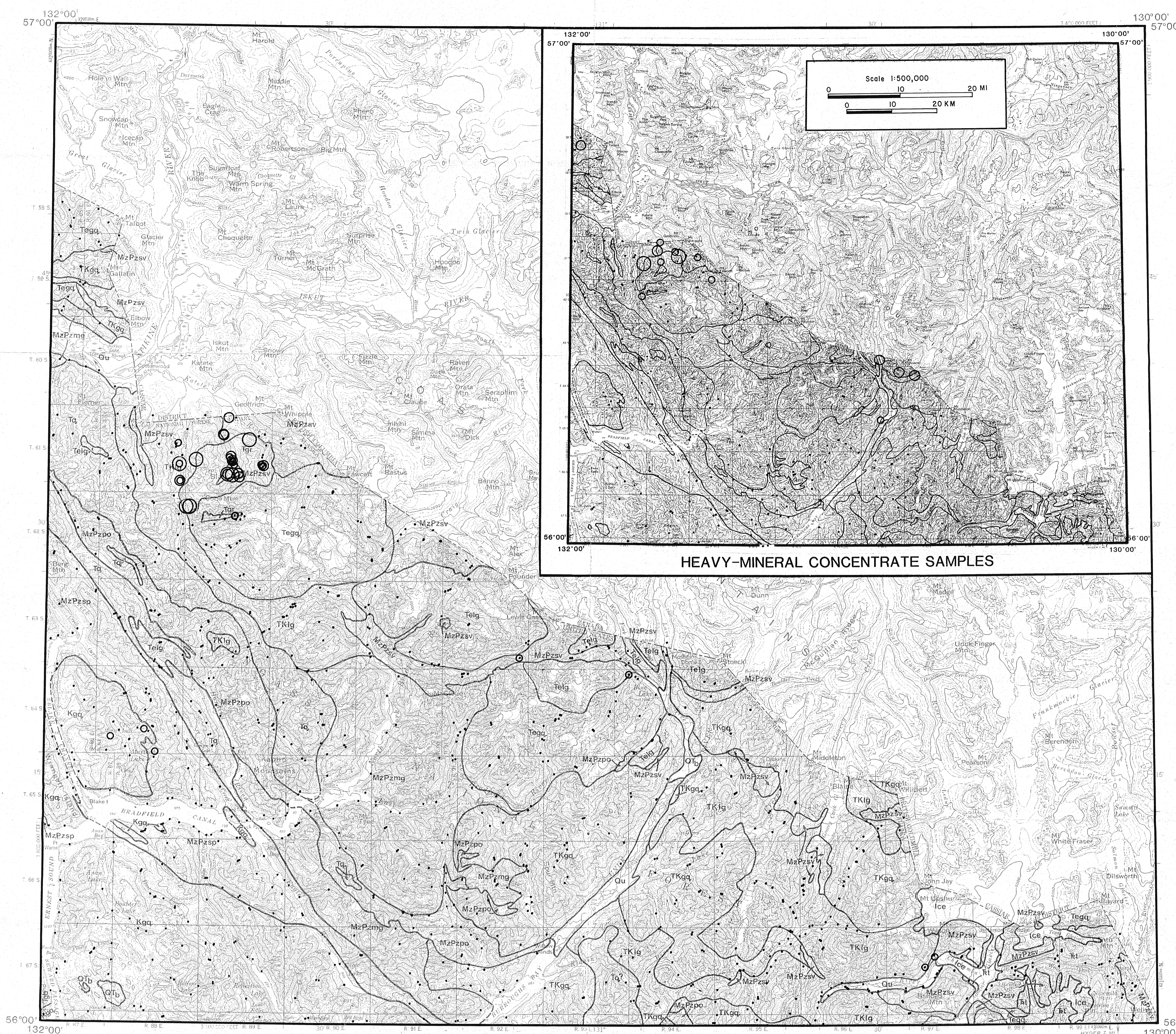


FOLIO OF THE BRADFIELD CANAL QUADRANGLE, ALASKA

KOCH AND ELLIOTT--GEOCHEMISTRY-Nb

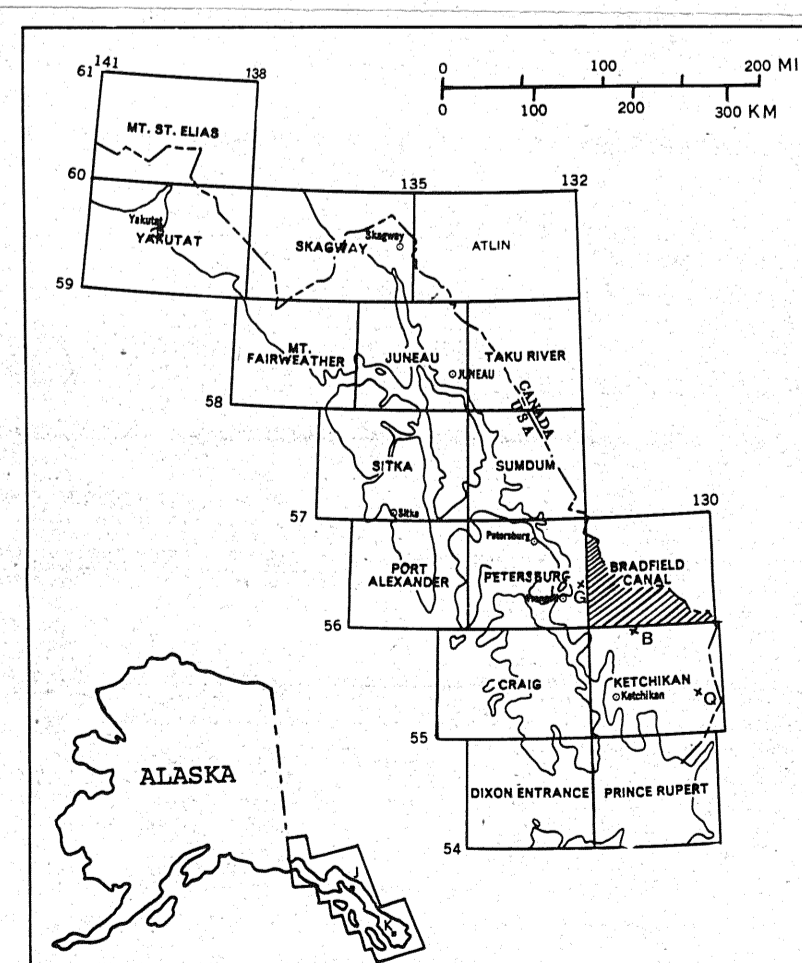
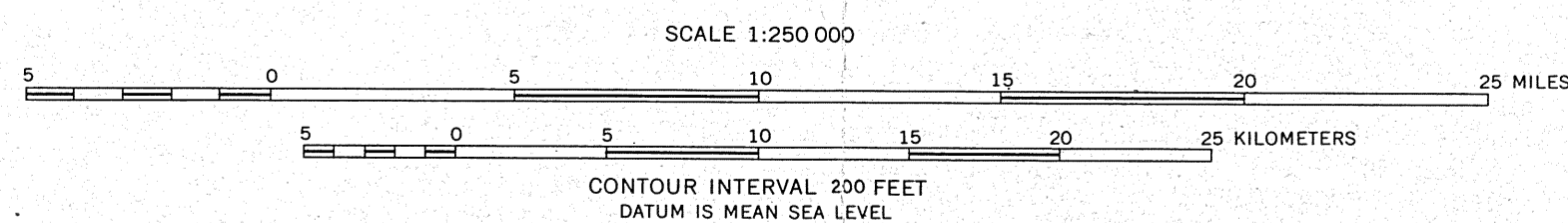


HEAVY-MINERAL CONCENTRATE SAMPLES

STREAM-SEDIMENT SAMPLES

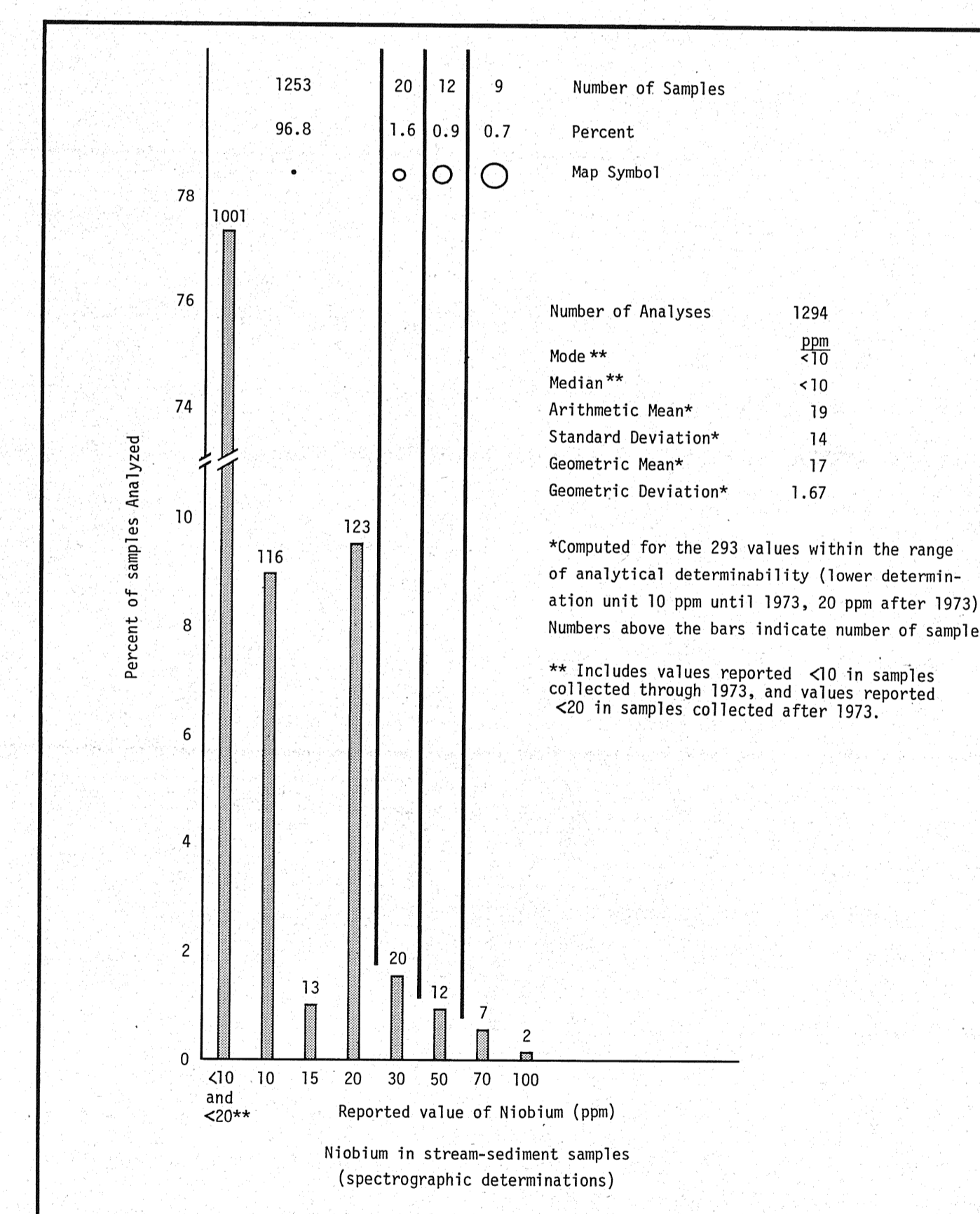
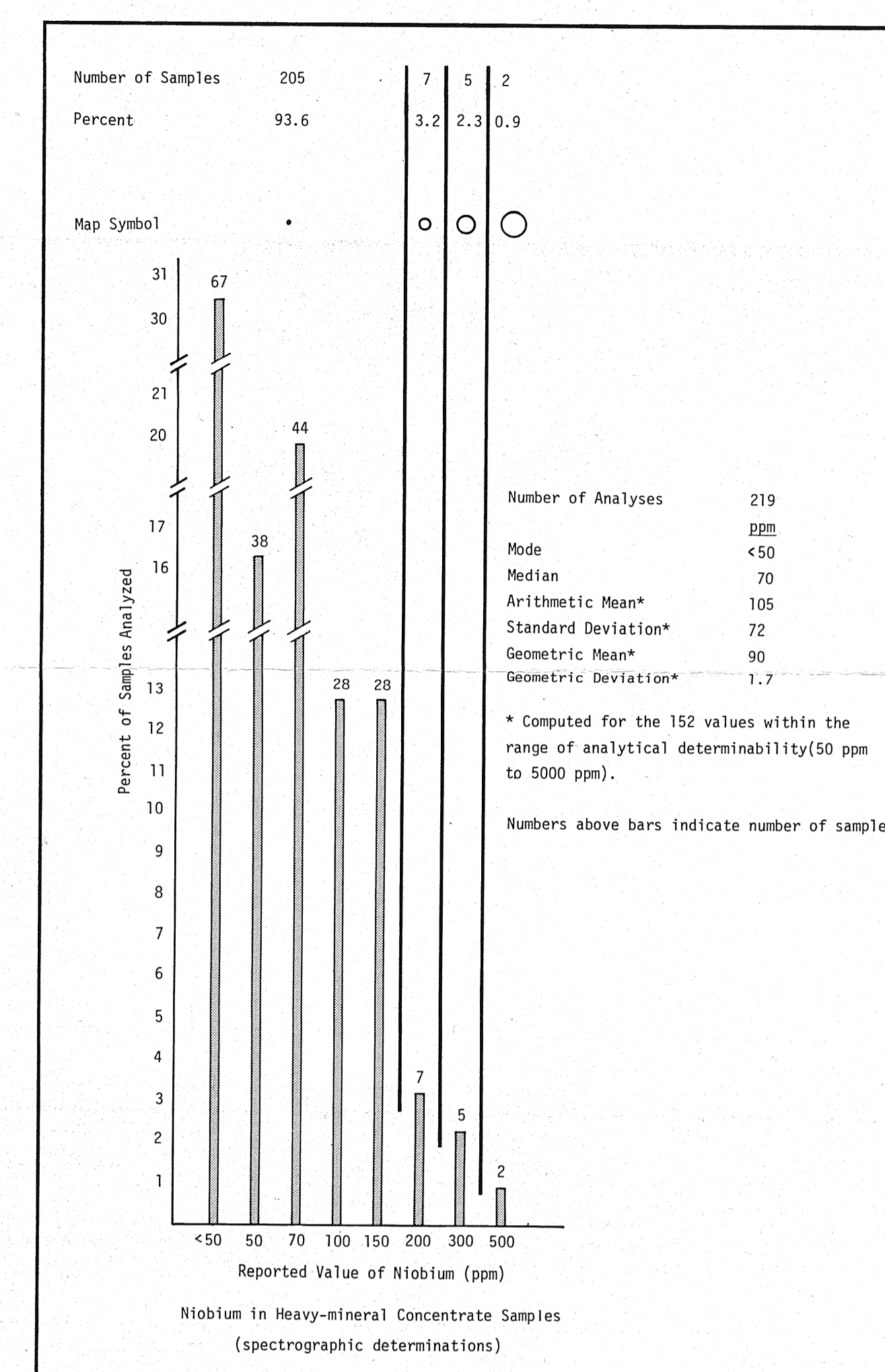
Base from USGS 1:250,000 topo series:
Bradfield Canal, 1955, ALASKA-CANADA.

Geology by H. C. Berg, D. A. Brew, A. L. Clark, W. H. Condon,
J. E. Decker, M. F. Diggles, G. C. Dunne, R. L. Elliott,
J. D. Gallinatki, M. H. Hendrick, S. W. Karl, R. D. Koch,
M. L. Miller-Hoare, R. P. Morrell, J. G. Smith, and
R. A. Sonnevill, 1968-1979.



TRUE NORTH
APPROXIMATE MEAN
MAGNETIC NORTH
1955

- Unit Descriptions
- Qu UNCONSOLIDATED DEPOSITS, UNDIVIDED (Quaternary)
 - Qtz BASALT (Quaternary and Tertiary?)
 - Tgr ALKALI-FELDSPAR GRANITE WITH ASSOCIATED QUARTZ-PORPHYRIC RHYOLITE DUKES AND FLORES (?) (Miocene)
 - Tgbb BIOTITE-PYROXENE GABBRO, LOCALLY CONTAINS HORNBLENDE AND/OR OLIVINE (Miocene)
 - Tgig LEUCOCRATIC QUARTZ MONZONITE AND GRANODIORITE (Eocene)
 - Tgog GRANDIORITE AND QUARTZ DIORITE (Eocene)
 - Tq QUARTZ DIORITE (Eocene or Paleocene)
 - TKig LEUCOCRATIC QUARTZ MONZONITE AND GRANODIORITE (Tertiary and/or Cretaceous)
 - TKgg GRANDIORITE AND QUARTZ DIORITE (Tertiary and/or Cretaceous)
 - Kgs BIOTITE-HORNBLende QUARTZ DIORITE, PLAGIOCLASE-PORPHYRIC BIOTITE GRANODIORITE, QUARTZ DIORITE, BOTH LOCALLY CONTAIN GARNET AND/OR EPIDOTE (Cretaceous)
 - Tt TEXAS CREEK GRANODIORITE (Triassic)
 - MzPzmg MIGMATITE AND ORTHOGNEISS, WITH LESSER PARAGNEISS (Mesozoic and/or Paleozoic)
 - MzPzoo PARAGNEISS AND ORTHOGNEISS, WITH LESSER AMPHIBOLITE AND MARBLE (Mesozoic and/or Paleozoic)
 - MzPzso SCHIST AND PARAGNEISS, WITH LESSER AMPHIBOLITE AND MARBLE (Mesozoic and/or Paleozoic)
 - MzPzsv METASEDIMENTARY AND LESSER METAVOLCANIC ROCKS, WITH LOCAL MARBLE (Mesozoic and/or Paleozoic)



MAPS SHOWING DISTRIBUTION AND ABUNDANCE OF NIObIUM IN GEOCHEMICAL SAMPLES FROM THE BRADFIELD CANAL QUADRANGLE, SOUTHEASTERN ALASKA

by
R.D.KOCH AND R.L.ELLIOTT

1981

This report is preliminary and has not been reviewed for conformity with Geological Survey editorial standards and stratigraphic nomenclature.