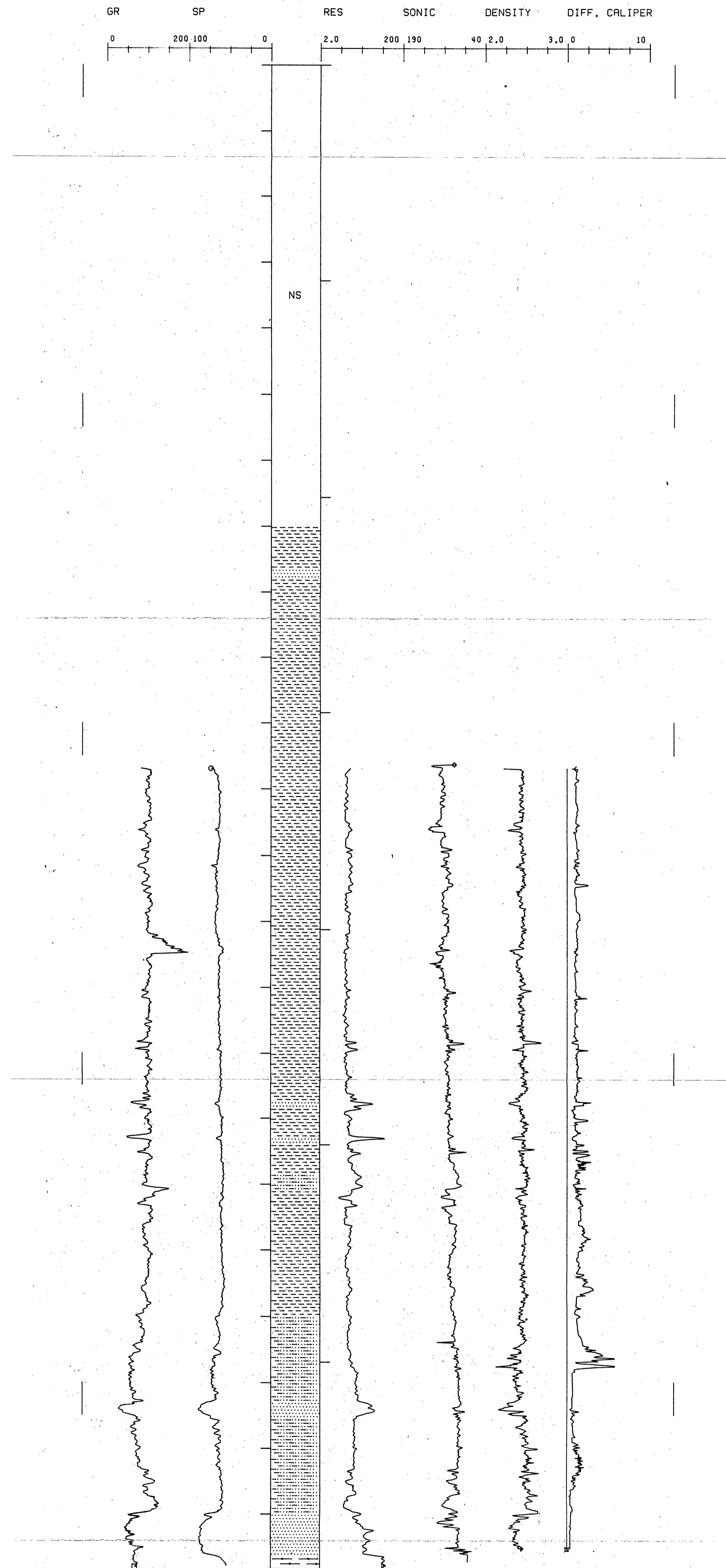


# SOUTH BARROW NO. 12

API #50-023-20006  
SEC 23 T 22N R 17W  
TD 2285 FT., KB 26 FT.



DEPARTMENT OF THE INTERIOR U.S. GEOLOGICAL SURVEY OFFICE OF THE NATIONAL PETROLEUM RESERVE IN ALASKA	
LOCATION: NPRA	
LOG DISPLAY (NO. 2)	
AUTHOR: X. BIRD	DATE: 4-18-80
DATUM: 26 ASL	SCALE: 11N:100FT TSP NO. 138
DRWG BY: EXPLORATION TECHNOLOGY	DRWG NO.