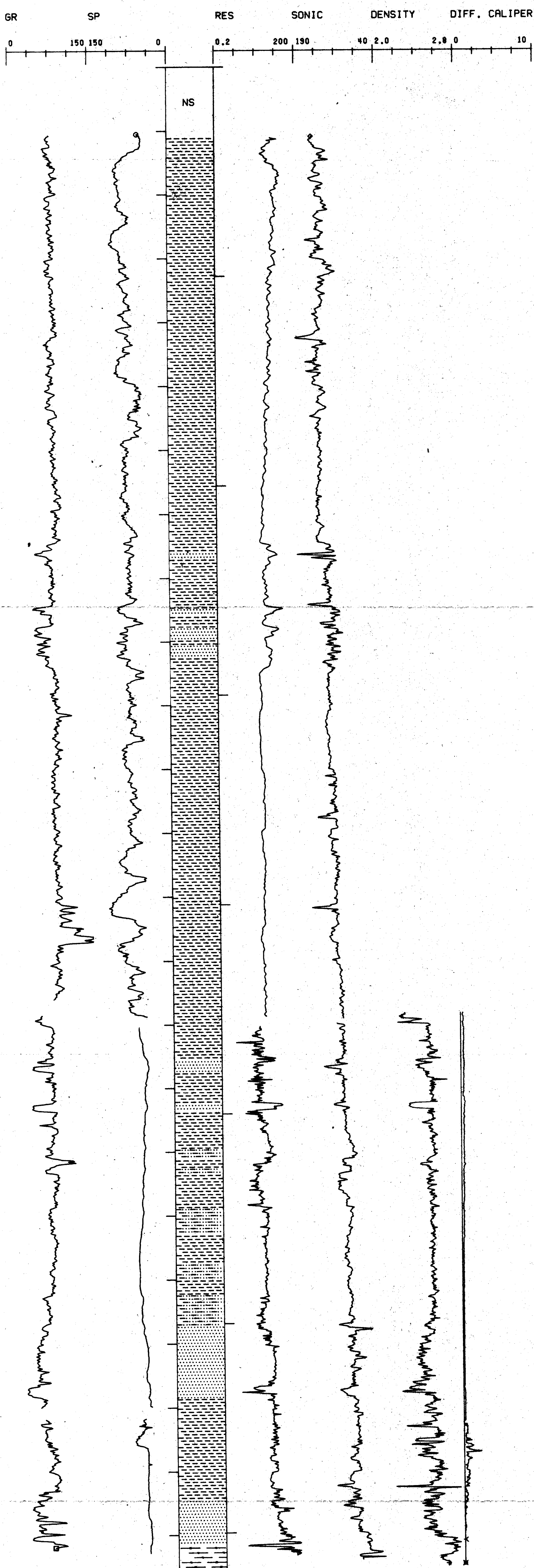


SOUTH BARROW NO. 20

API #50-023-20015

SEC 26 T 22N R 17W

TD 2356 FT., KB 30 FT.



DEPARTMENT OF THE INTERIOR U.S. GEOLOGICAL SURVEY OFFICE OF THE NATIONAL PETROLEUM RESERVE IN ALASKA			
LOCATION: NPRA			
S. BARROW NO. 20 LOG DISPLAY BOREHOLE CORR. GAMMA RAY			
AUTHOR: K. BIRD	DATE: 7-28-80		
DATUM: 30 ASL	SCALE: 1IN:100FT	TSP NO. PI-210	
DRWG BY: EXPLORATION TECHNOLOGY		DRWG NO.	