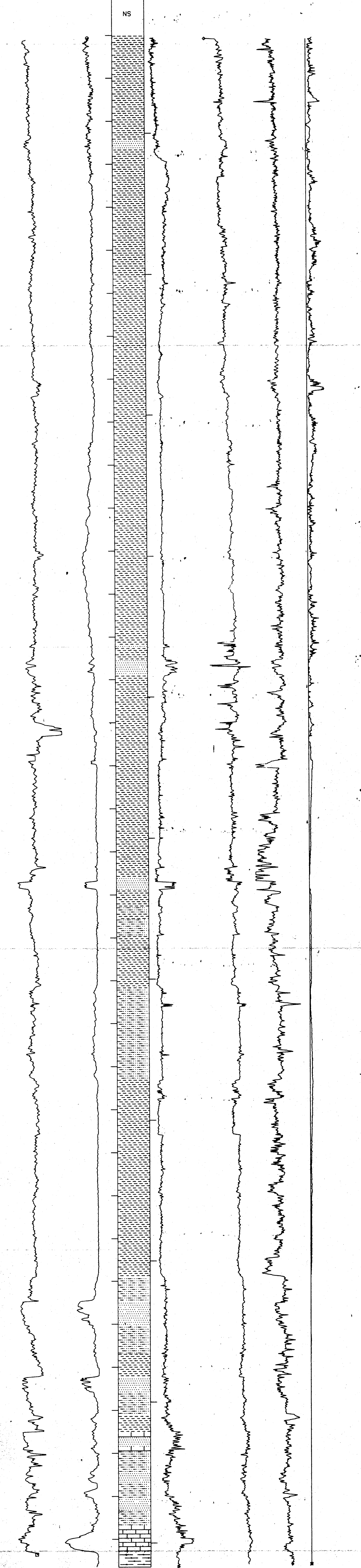


# WALAKPA NO. 1

API# 50-023-20013  
 SEC 9 T 20N R 19W  
 TD 3666 FT., KB 50 FT.

GR      SP      RES      SONIC      DENSITY      DIFF. CALIPER

0      200 150      0      2.0      2000 190      40 2.0      3.0 0      10



DEPARTMENT OF THE INTERIOR U.S. GEOLOGICAL SURVEY OFFICE OF THE NATIONAL PETROLEUM RESERVE IN ALASKA			
LOCATION: NPRA			
WALAKPA NO. 1 LOG DISPLAY BOREHOLE CORR. GAMMA RAY			
AUTHOR:	K. BIRD	DATE:	05-28-80
DATUM:	50 ASL	SCALE:	1IN:100FT
DRWG BY:	EXPLORATION TECHNOLOGY	TSP NO.:	PI-173
		DRWG NO.:	