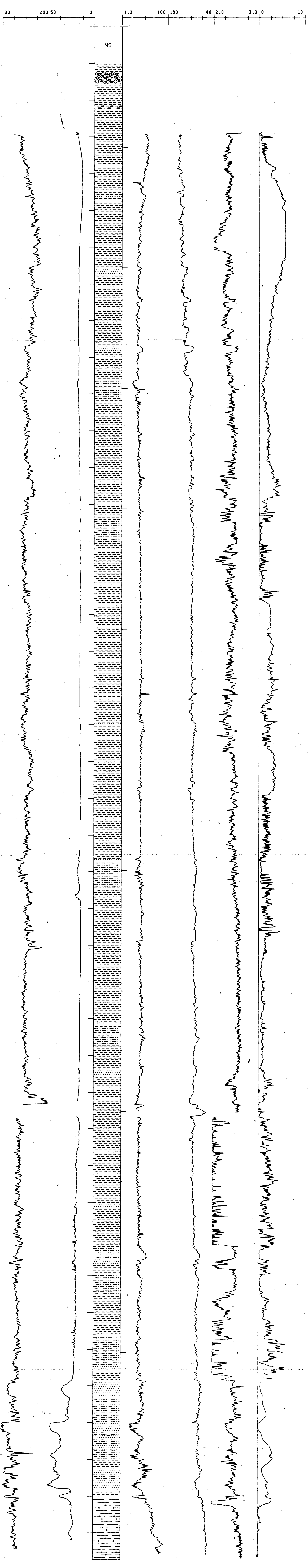


WEST DEASE NO. 1

API #50-023-20014

SEC 21 T 21N R 14W

: TD 4173 FT., KB 24 FT.



DEPARTMENT OF THE INTERIOR U.S. GEOLOGICAL SURVEY OFFICE OF THE NATIONAL PETROLEUM RESERVE IN ALASKA			
LOCATION: NPRA			
WEST DEASE LOG DISPLAY			
AUTHOR: K. BIRD	DATE: 01-13-81		
DATUM: KB 24 FT.	SCALE: 11IN:100FT	TSP NO. P1-171	
DRWG BY: EXPLORATION TECHNOLOGY		DRWG NO.	