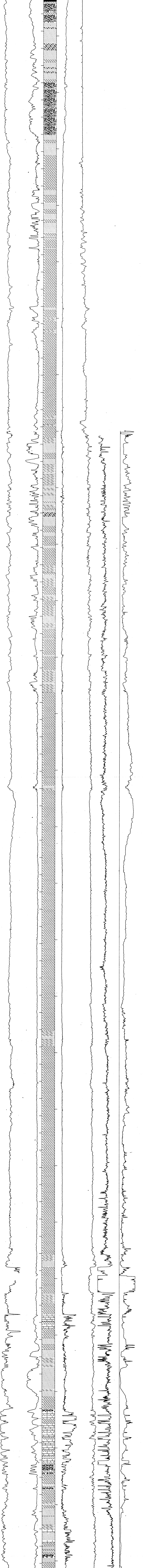


J.W. DALTON NO. 1

API #50-279-20006

SEC 14 T 18N R 5W

TD 9367 FT., KB 37 FT.



DEPARTMENT OF THE INTERIOR U.S. GEOLOGICAL SURVEY OFFICE OF THE NATIONAL PETROLEUM RESERVE IN ALASKA		
LOCATION: NPRA		
DALTON LOG DISPLAY BOREHOLE CORN. GAMMA RAY		
AUTHOR: K. BIRD	SCALE: 1IN:100FT	DATE: 4-10-80
DATUM: 37 ASL		TSP NO. P1-84
DRWG BY: EXPLORATION TECHNOLOGY		DRWG NO.