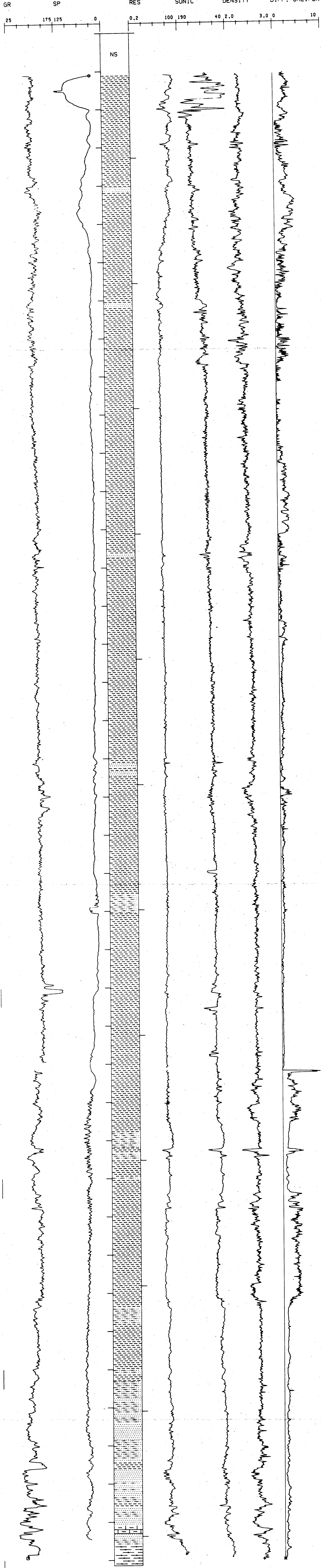


TULAGEAK NO. 1

API #50-023-20018

SEC 7 T 21N R 14W

TD 4015 FT., KB 27 FT.



DEPARTMENT OF THE INTERIOR U.S. GEOLOGICAL SURVEY OFFICE OF THE NATIONAL PETROLEUM RESERVE IN ALASKA			
LOCATION: NPRA			
TULAGEAK NO. 1 BOREHOLE CORR. GAMMA RAY			
AUTHOR: K. BIRD		DATE: 6-03-81	
DATUM: 27 ASL		SCALE: 1 IN. = 100 FT.	
DRWG BY: EXPLORATION TECHNOLOGY		DRWG NO.	