

RADIATION LOGS

LITHOGRAPHIC LOG
CASING LOG

NATURAL GAMMA

NEUTRON

GAMMA-GAMMA

CALIPER LOG

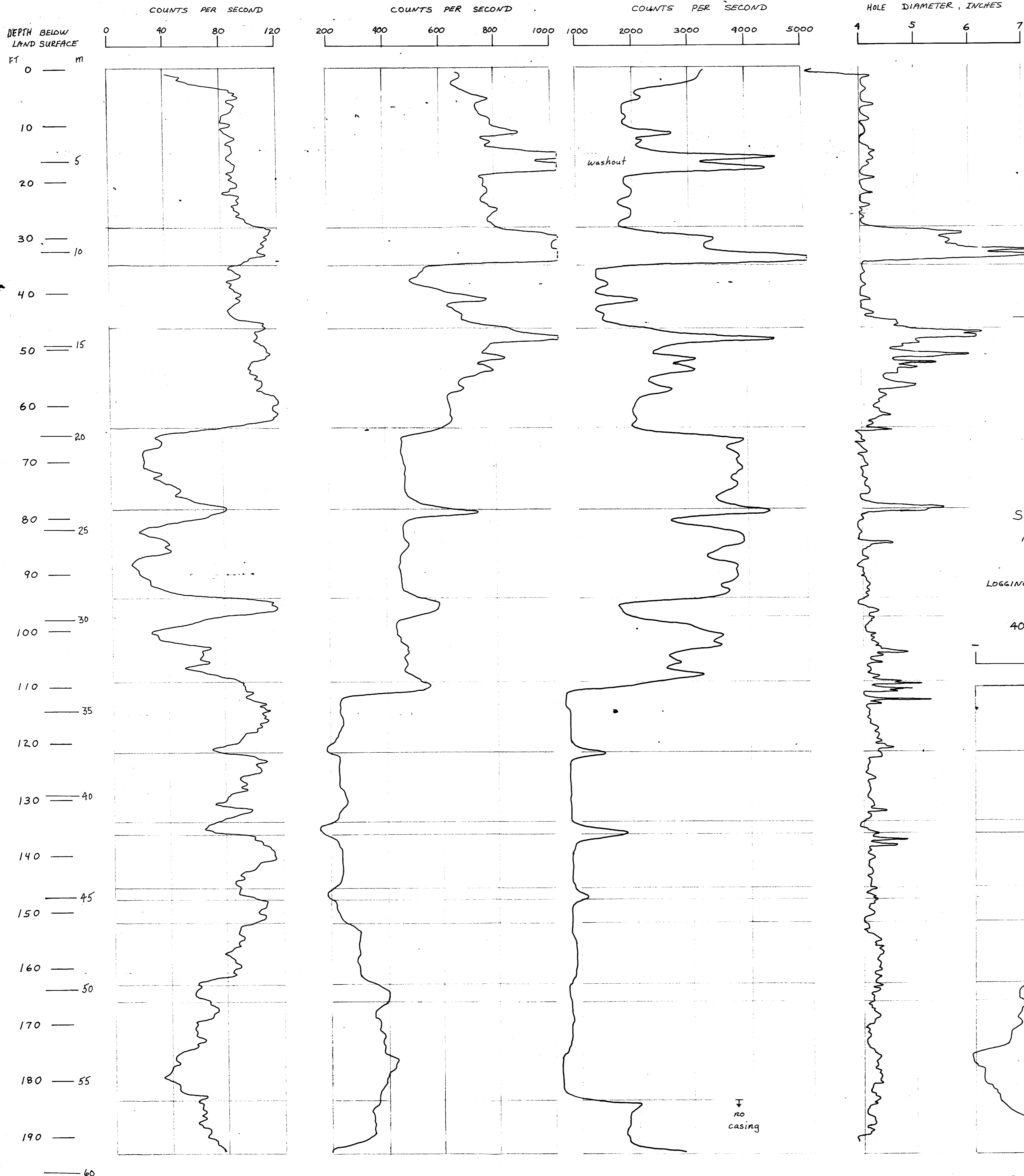
LOGGING SPEED: 3.6 m (12.0 ft)/min up
TIME CONSTANT: 4 SEC

LOGGING SPEED: 3.6 m (12.0 ft)/min up
TIME CONSTANT: 4 SEC

LOGGING SPEED: 3.6 m (12.0 ft)/min up
TIME CONSTANT: 2 SEC

LOGGING SPEED: 3.6 m (12.0 ft)/min up

- SILTSTONE
- CLAYSTONE
- COAL
- SANDSTONE: fine grained
- SANDSTONE: medium grained
- NO RECOVERY



ELECTRIC LOGS

SPONTANEOUS POTENTIAL

SINGLE-POINT RESISTANCE

BOREHOLE TEMPERATURE LOG

LOGGING SPEED: 3.6 m (12.0 ft)/min up

LOGGING SPEED: 3.6 m (12.0 ft)/min up

LOGGING SPEED: 1.5 m (5.0 ft)/min down
TIME CONSTANT: 1 SEC

40 MILLIVOLTS / DIVISION

10 OHMS PER DIVISION

DEGREES CELSIUS/FAHRENHEIT

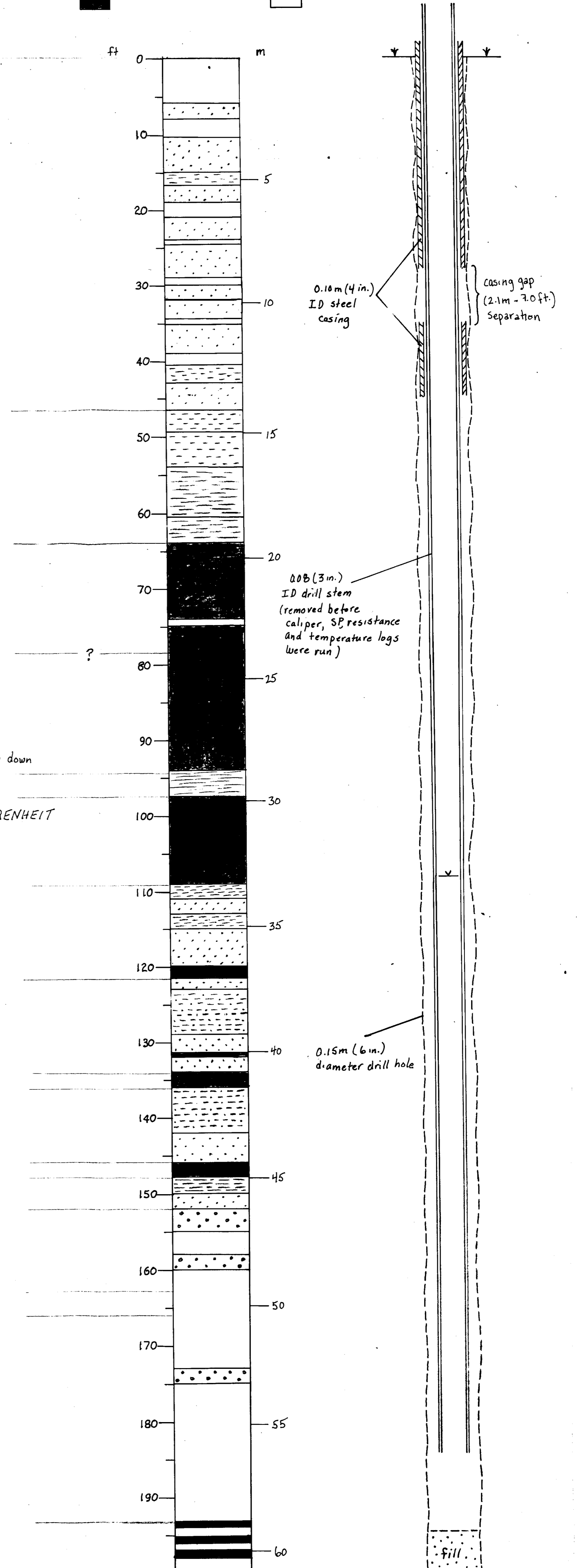
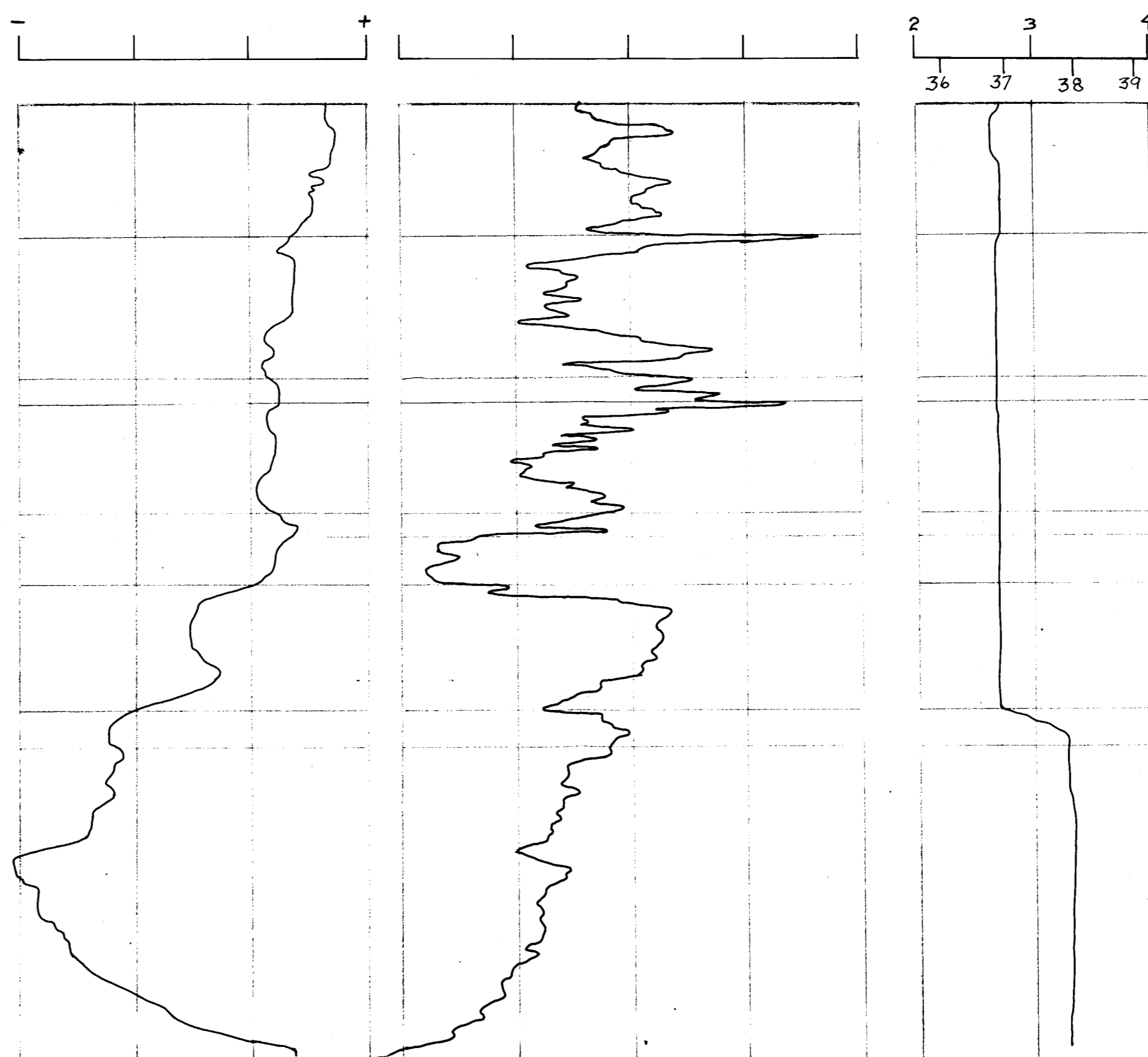


PLATE 2.--COMPILATION OF GEOPHYSICAL, LITHOGRAPHIC, AND CASING LOGS FROM U.S. GEOLOGICAL SURVEY DRILL HOLE NO. 2C-80