

# GEOPHYSICAL LOGS OF USGS DRILL-HOLE 81-2

# Chuitna West Coal Field

logged by ALASKA DIVISION OF GEOLOGICAL & GEOPHYSICAL SURVEYS July 31, 1981

## NATURAL GAMMA

Logging Speed: 10 ft/min up  
Time Constant: 8 sec

COUNTS / SECOND

## SPONTANEOUS POTENTIAL

Logging Speed: 10 ft/min up  
Artesian Flow  
Cased to 23.7 ft

MILLIVOLTS

## SINGLE-POINT RESISTANCE

OHMS

## CORE GEOLOGY

- siltstone
- sandstone (i.e. calcareous)
- coal
- till
- no recovery

## 3-ARM CALIPER

Logging Speed: 10 ft/min up  
Calibrated  
Drill-hole diameter

INCHES

## GAMMA-GAMMA DENSITY

Logging Speed: 10 ft/min up  
Time Constant: 2 sec  
Source & Spacing: 4 mCi Co<sup>60</sup>; 17 in

COUNTS / SECOND

## NEUTRON POROSITY

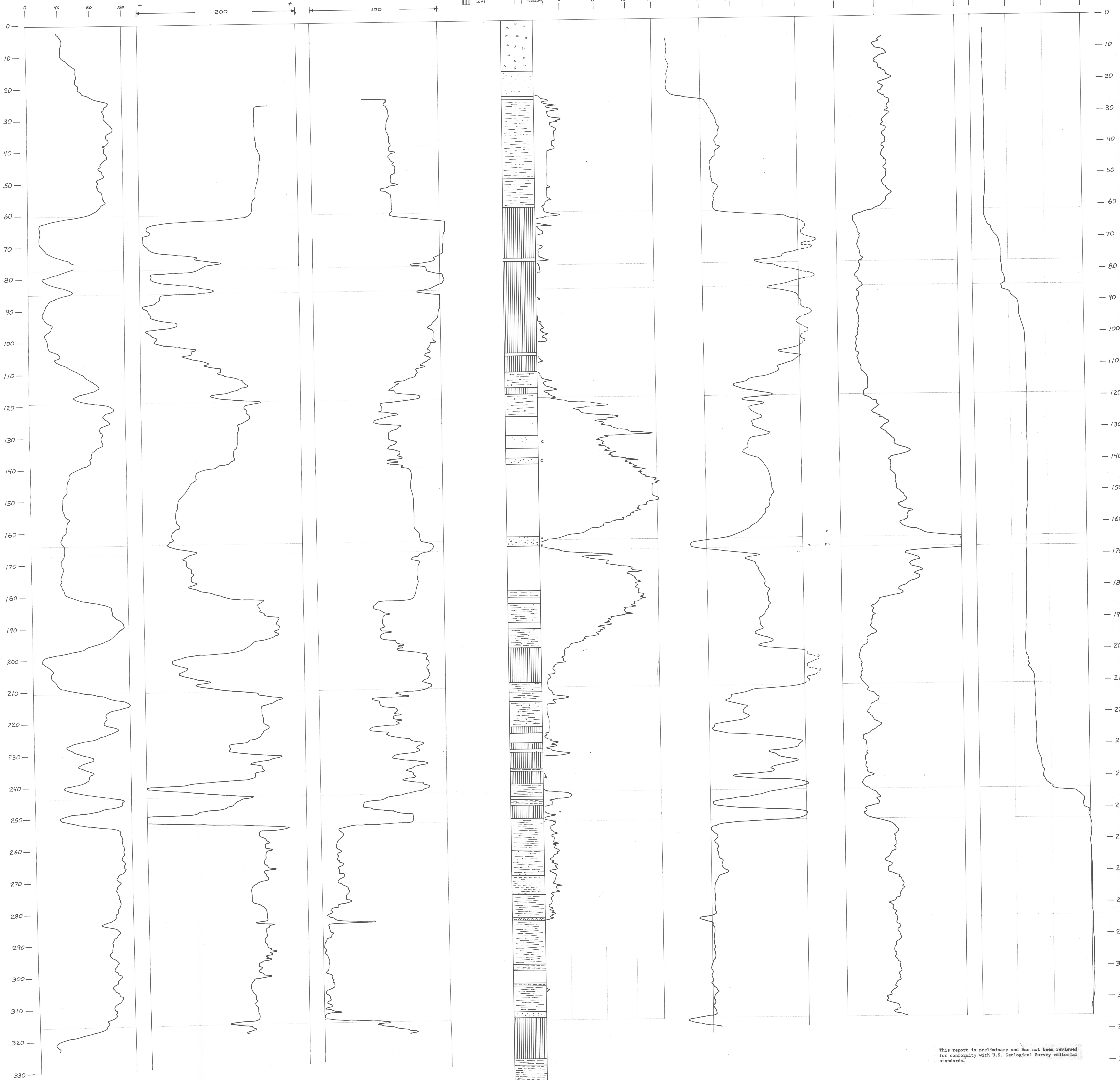
Logging Speed: 10 ft/min up  
Time Constant: 4 sec  
Source & Spacing: 3 Ci Am<sup>241</sup>Be; 17 in

COUNTS / SECOND

## HIGH-RESOLUTION TEMPERATURE

Logging Speed: 6 ft/min down  
Time Constant: 1 sec  
Artesian Flow: 12 hrs undisturbed

DEGREES CELSIUS



COMPOSITE OF REFINED GEOPHYSICAL AND LITHOLOGIC LOGS FROM DRILL HOLE CW-81-2

This report is preliminary and has not been reviewed for conformity with U.S. Geological Survey editorial standards.