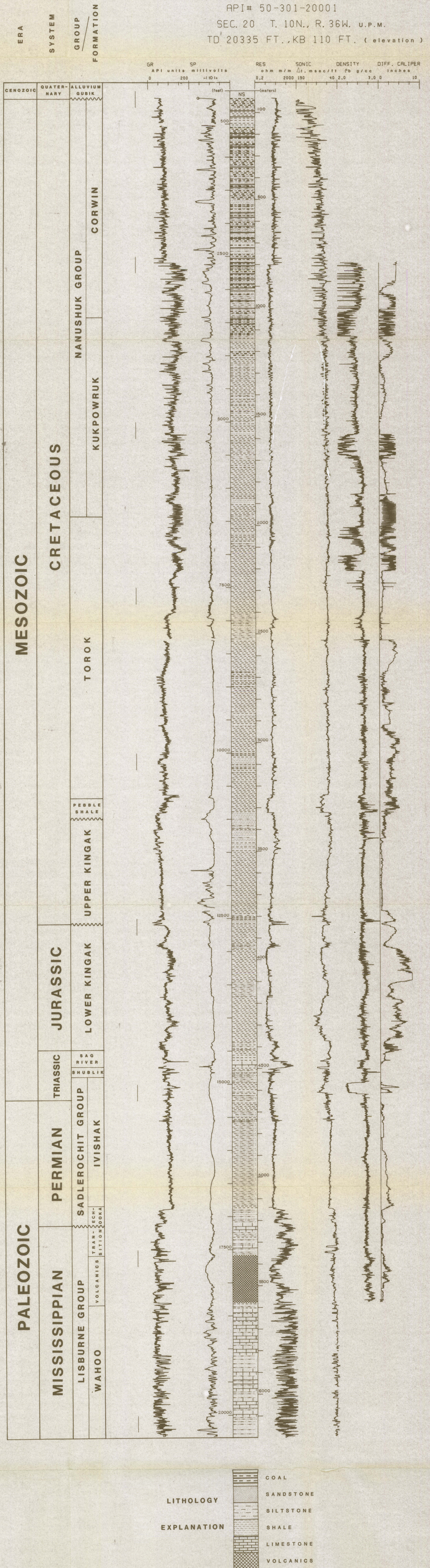
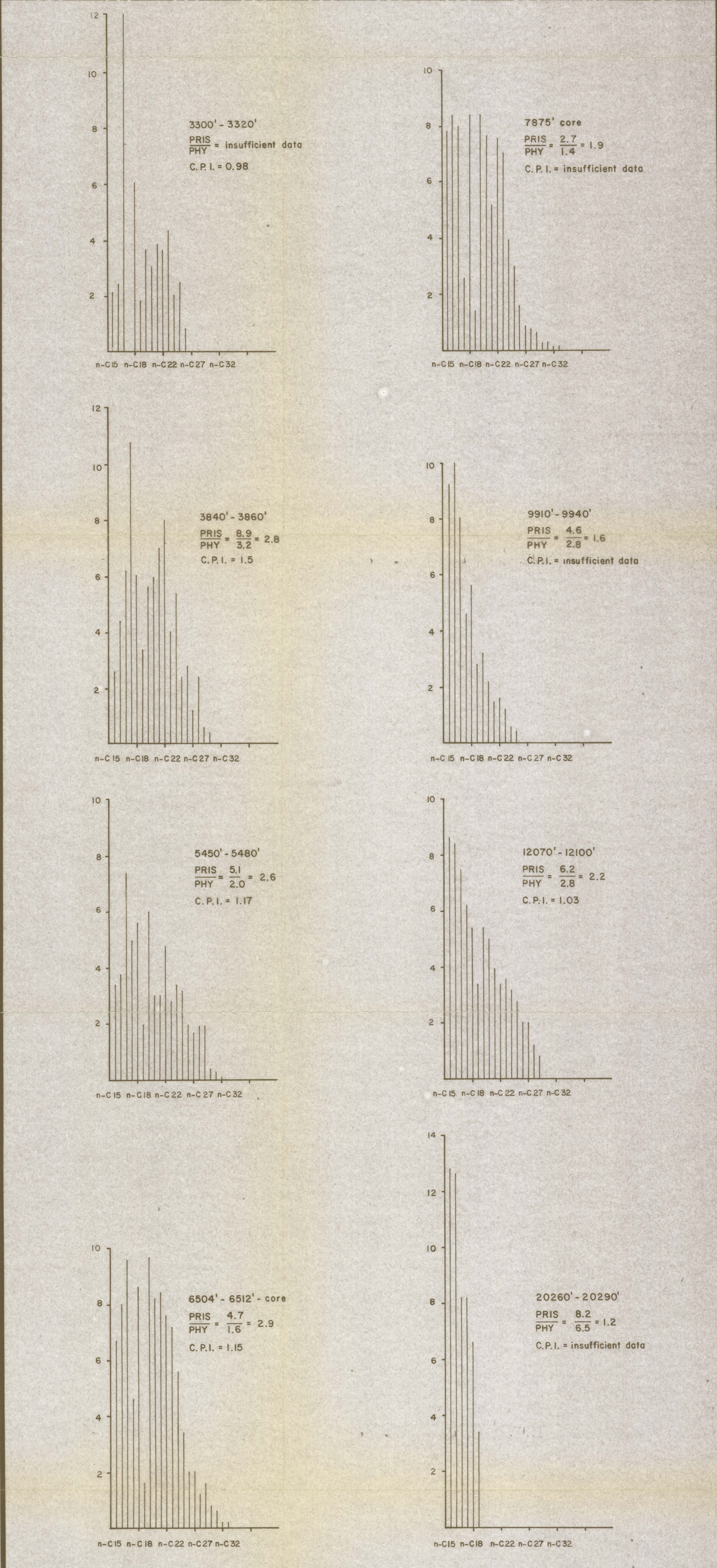
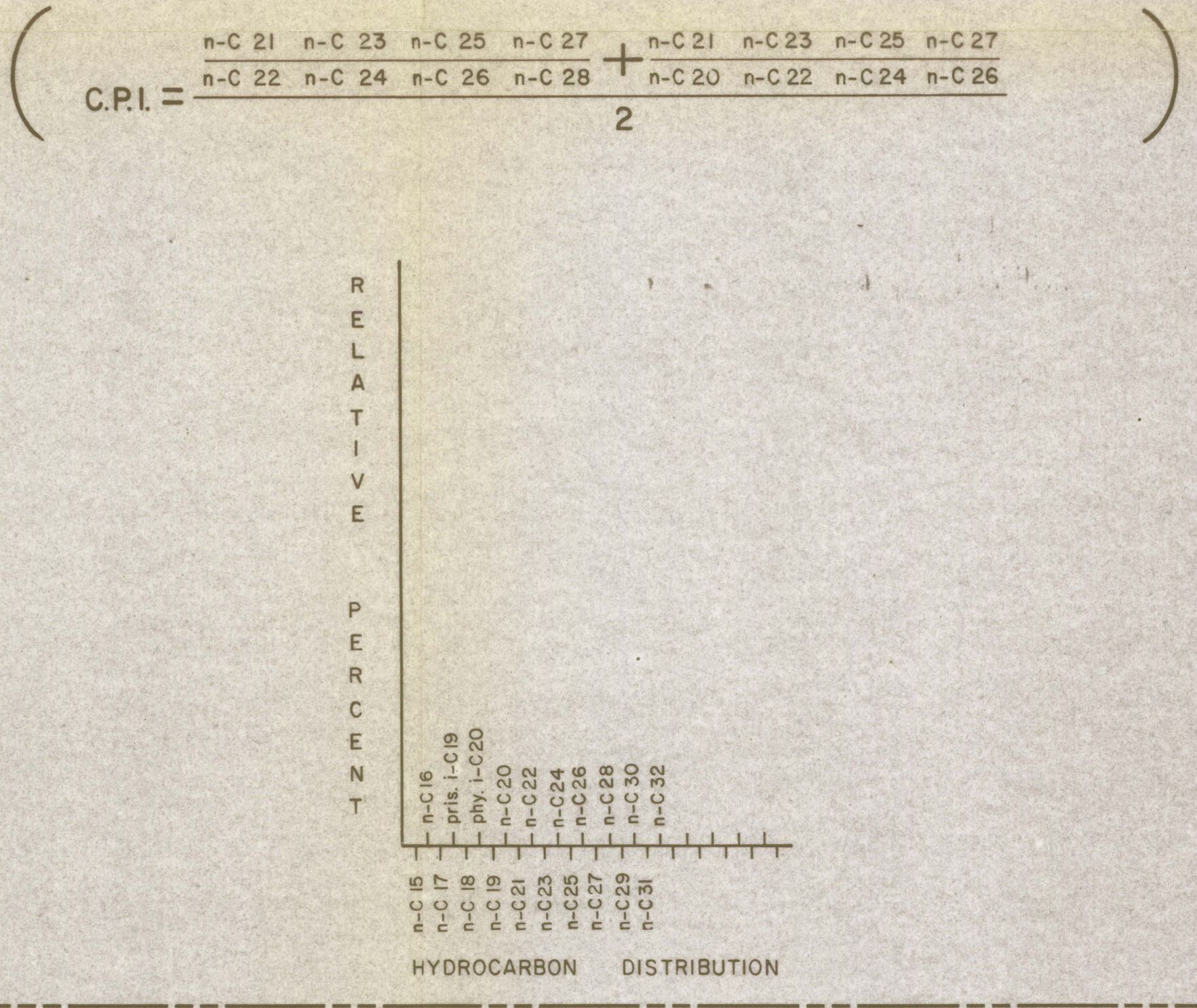


TUNALIK NO. 1  
API# 50-301-20001  
SEC. 20 T. 10N., R. 36W. U.P.M.  
TD 20335 FT., KB 110 FT. (elevation)



ALKANE DISTRIBUTION

For Various Samples in Tunalik Well  
( n-C 15 to n-C 35, Pristane and Phytane )



ATOMIC RATIOS

( H/C vs. O/C, of Kerogen for the Nanushuk Group, Torok Formation, Kingak Shale and Lisburne Group )

