

EXPLANATION

ROCKS WEST OF THE  
PORT GRAHAM FAULT

ROCKS EAST OF THE  
PORT GRAHAM FAULT

CLASTIC ROCKS

Quaternary	Qd	Surficial deposits: unconsolidated sand, gravel, and boulders.	
	unconformity		
Tertiary	Tkt	Tyonek Formation: poorly lithified sandstone, siltstone, mudstone, conglomerate, and coal	
	unconformity		
Lower Jurassic	Jpn	u	Pogibshi Formation Jpnu Upper part - Naskowhak Member: tuffaceous sandstone and siltstone
		1	Jpl Lower part - Naskowhak Member: tuffaceous siltstone, mudstone, sandstone, and coal
	Jpj	u	Jpju Upper part - July Member: vitric tuff, lapilli tuff, and tuff-breccia
		1	Jpjl Lower part - July Member: tuffaceous sandstone, conglomerate, mudstone, and tuff
	Jpd	u	Jpdu Upper part - Dangerous Member: tuffaceous conglomerate-breccia sandstone and
		m	Jpdm Middle part - Dangerous Member: tuff, tuffaceous siltstone, and limestone
	Lmst	u	Jpdl Lower part - Dangerous Member: volcanic conglomerate-breccia and sandstone
		1	Jpu Pogibshi Formation undifferentiated
	local unconformity		
	Upper Triassic and Lower Jurassic	JR pg	Port Graham Formation: tuff, tuffaceous sediments, shale, limestone, chert, and siltstone

IGNEOUS ROCKS

Note: Many unmapped greenish-gray, mostly andesitic dikes crop out in the sea cliffs and adjacent areas between Point Pogibshi and Point Bede. The dikes cut the Point Bede Quartz Diorite and are disconformably overlain by the Tyonek Formation.

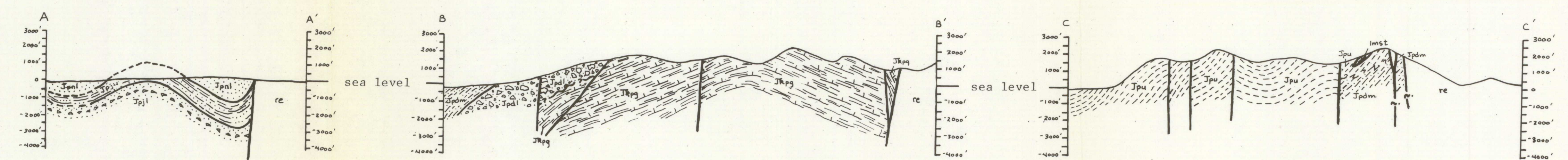
Lower Jurassic  
Jbd Point Bede Quartz Diorite

UNDIFFERENTIATED ROCKS

re Rocks east of the Port Graham Fault: includes crystalline metamorphic rocks, pillow lava, chert, tuff, limestone, argillite

MAP SYMBOLS

- Contact, dashed where approximate, dotted where concealed, queried where inferred
- Fault, dashed where approximate, dotted where concealed, queried where inferred
- Strike and dip
- Estimated strike and dip
- Anticline showing direction of plunge, dashed where approximate, dotted where concealed
- Syncline showing direction of plunge, dashed where approximate



Scale: 1:63,360  
Contour Interval 100 feet

0 1 2 3 4 5 mi  
0 1 2 3 4 5 km

Geology by J. S. Kelley, 1975, 1976, 1977, 1983

Topographic base from U.S. Geological Survey  
Seldovia A-6, B-5, B-6 15' Quadrangle Maps

This map is preliminary and has not been reviewed for conformity with U.S. Geological Survey editorial standards and stratigraphic nomenclature.

GEOLOGIC MAP AND SECTIONS OF THE SOUTHWESTERN KENAI PENINSULA  
WEST OF THE PORT GRAHAM FAULT, ALASKA

by  
J.S. KELLEY

1983