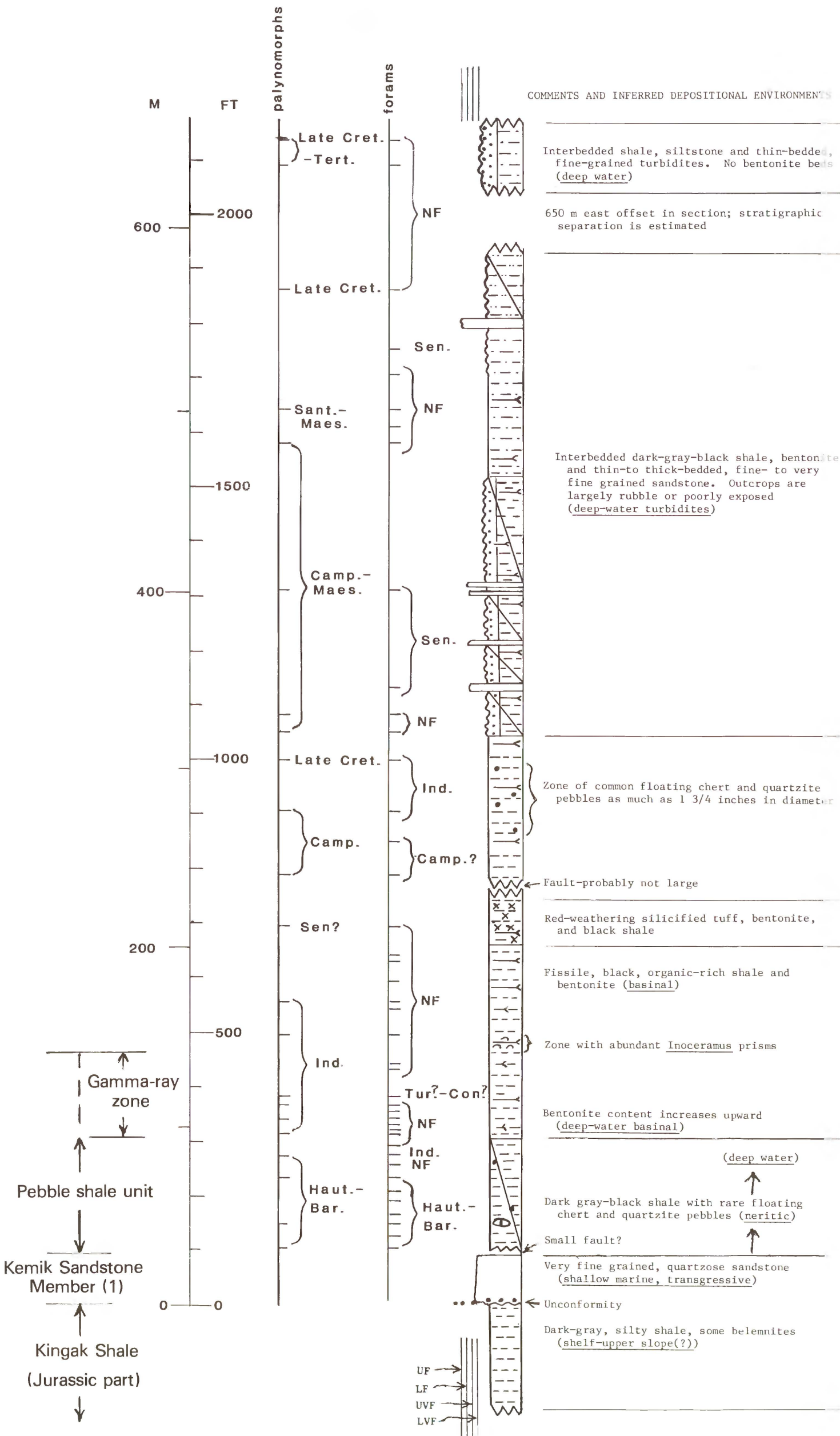


Section 19
Ignek Valley
Late Jurassic-Tertiary(?)
W/2, NE/4 sec. 6; NW/4, NW/4 sec. 5,
T. 2 N., R. 26 E.
Mt. Michelson (C-4) Quadrangle



THIS SECTION IS PRELIMINARY AND HAS NOT BEEN REVIEWED FOR CONFORMITY WITH U.S. GEOLOGICAL SURVEY EDITORIAL STANDARDS AND STRATIGRAPHIC NOMENCLATURE.