

**EXPLANATION**  
Contour interval.....20 NT  
Grid interval.....400 meters  
Regional field removed...ICRF 1980 updated  
Base value added.....56,814 NT  
Flight line spacing.....1 mile  
Flight line direction.....E-W  
Flight altitude.....1000 feet above ground  
(except in areas of extreme topography)  
Instrumentation.....Geomatrix G-813  
Sampling rate.....0.73 seconds  
Sensitivity.....0.10 NT  
Date flown.....August 1984

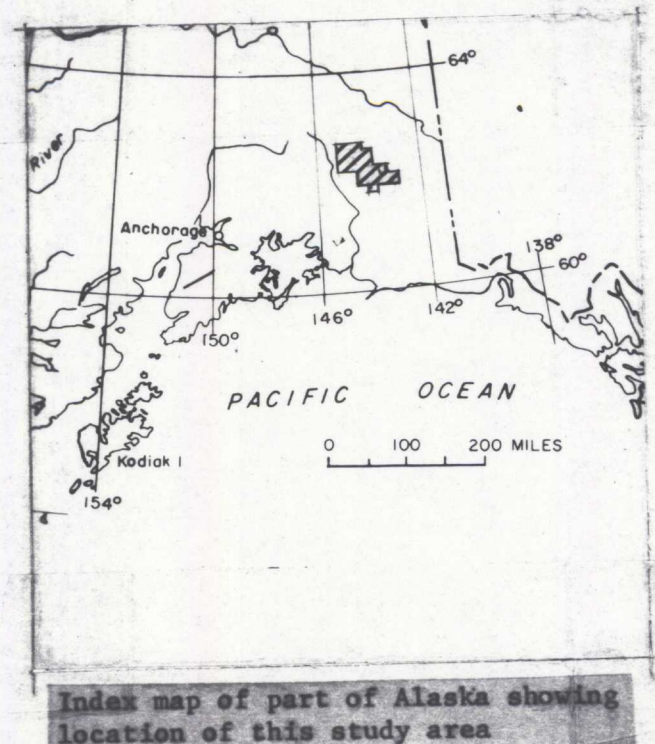
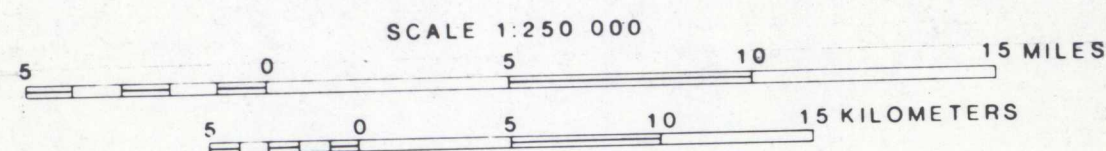
Flown and compiled by:  
Airborne Systems, Inc.

This map was prepared under contract to the U.S. Geological Survey and has not been reviewed for conformity with USGS editorial standards. Opinions and conclusions expressed herein do not necessarily represent those of the USGS. Any use of trade names is for descriptive purposes only and does not imply endorsement by the USGS.

**COMPOSITE AEROMAGNETIC MAP OF PART  
OF THE WRANGELL MOUNTAINS, ALASKA**

BY  
**U.S. GEOLOGICAL SURVEY**

**1985**



Index map of part of Alaska showing location of this study area