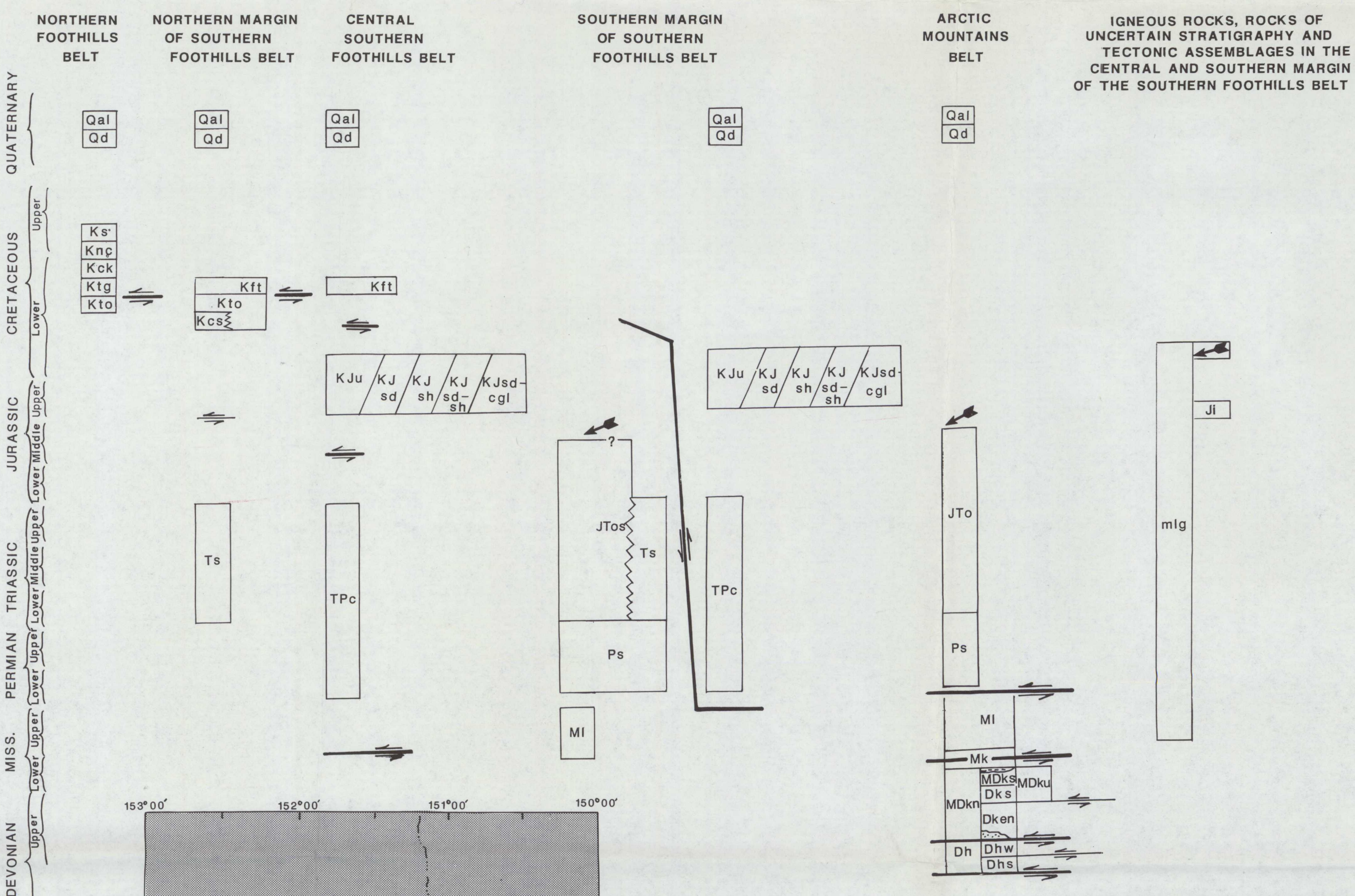


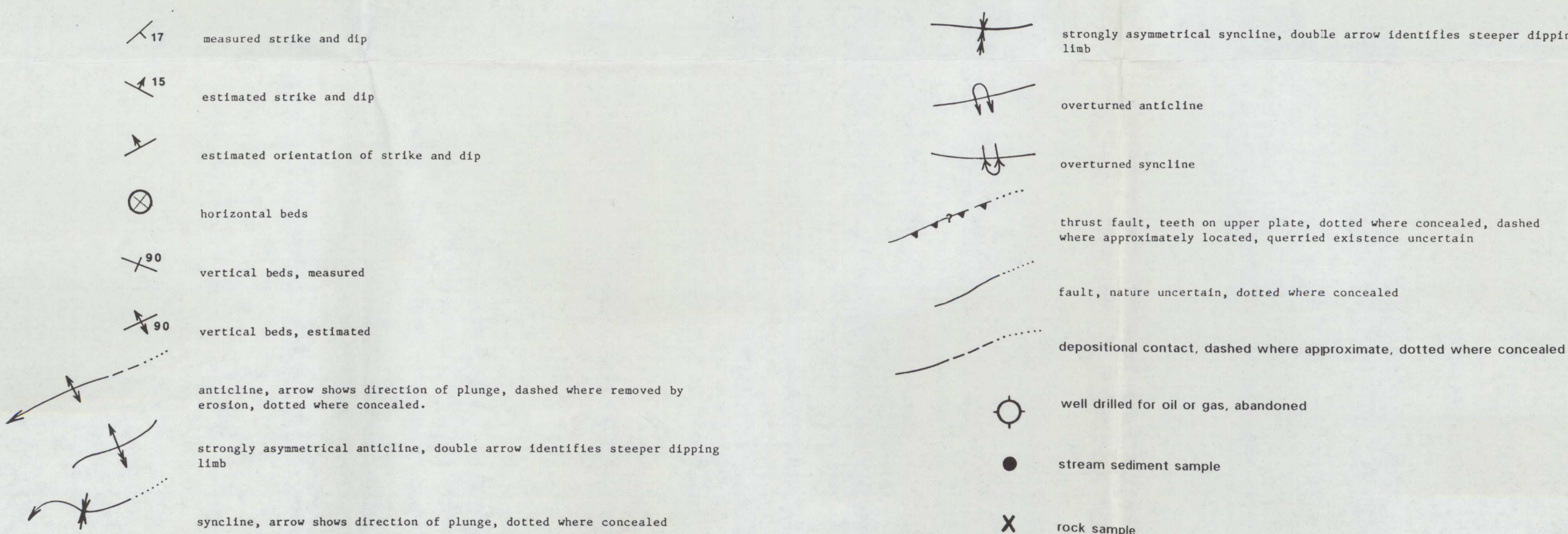
CORRELATION OF MAP UNITS



Correlation of map units shows time-stratigraphic correlation of 5 discrete and areally restricted rock assemblages. The assemblages occur in east-west trending belts that correspond to 3 regional physiographic belts, Northern Foothills, Southern Foothills, and Arctic Mountains Belts of Wahrhaftig (1965) (see Location Map); single assemblages underlie the Northern Foothills and Arctic Mountains Belts and 3 assemblages underlie the Southern Foothills Belt.

Although structural relations between assemblages are not well exposed, the correlation diagram shows observable and reasonably inferable structural relations, facies transitions, and litho-stratigraphic sequences. The diagram shows location of décollements and overthrust relations. Extensive décollements correspond to the more bold shear symbols whereas smaller symbols correspond to less extensive décollements.

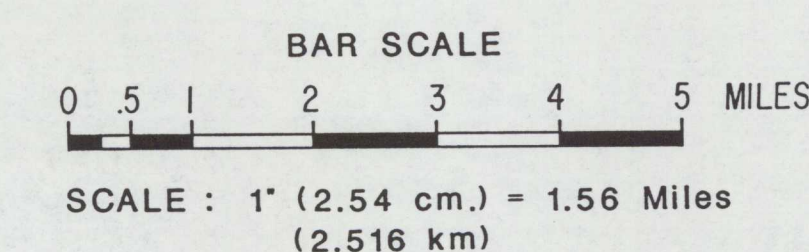
MAP SYMBOLS



LOCALITY MAP OF STREAM-SEDIMENT AND ROCK SAMPLES COLLECTED IN 1985 COBBLESTONE CREEK STUDY AREA, CHANDLER LAKE QUADRANGLE, ALASKA

Base from U.S. Geological Survey Chandler Lake 1:250,000 quadrangle, 1956 with limited revisions, 1983  
1959 magnetic declination at south edge of sheet ranges from 27° to 29° east

By  
C. E. Barnwell, Steven Simpson, and S. E. Church  
1989



Geologic base from Kelley (1988)

This map is preliminary and has not been edited or reviewed for conformity with U.S. Geological Survey editorial standards.