

Figure 1. Map of southeastern Alaska, showing location of Tongass National Forest lands open for mineral entry, Tongass National Forest lands in Wilderness status, U.S. National Park Service lands, State of Alaska, Sealaska Native Corporation, and private lands. All boundaries are approximate; some areas are too small to be depicted at this scale. Information from U.S. Forest Service (1990) and other sources.

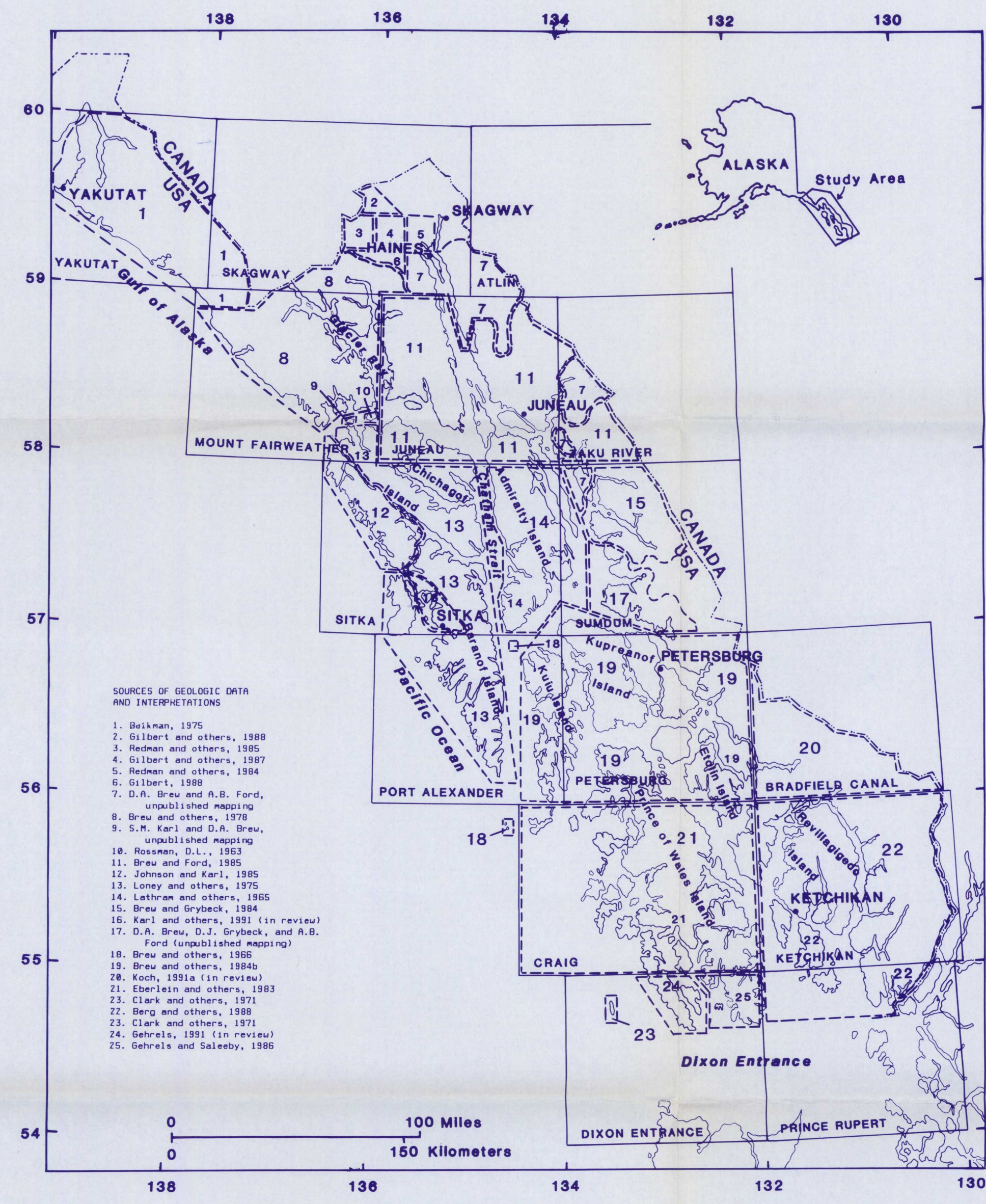


Figure 2. Map of southeastern Alaska, showing 1:250,000-scale quadrangles and major sources of geologic information.

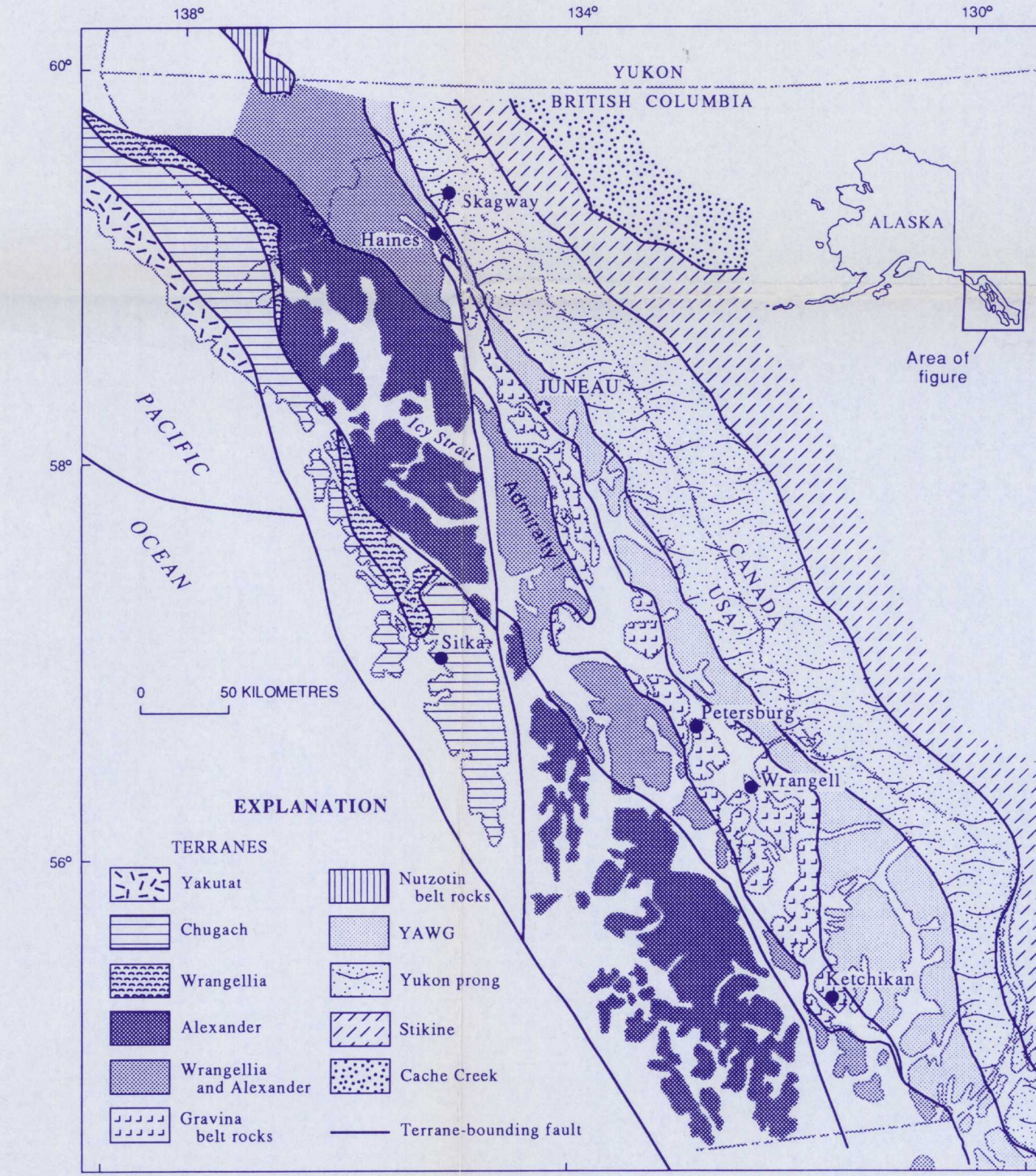


Figure 3. Map showing tectonostratigraphic terranes of southeastern Alaska and adjacent regions. Laberge overlap assemblage on the Sitkine and Cache Creek terranes is not shown. From Brew and others (in press).

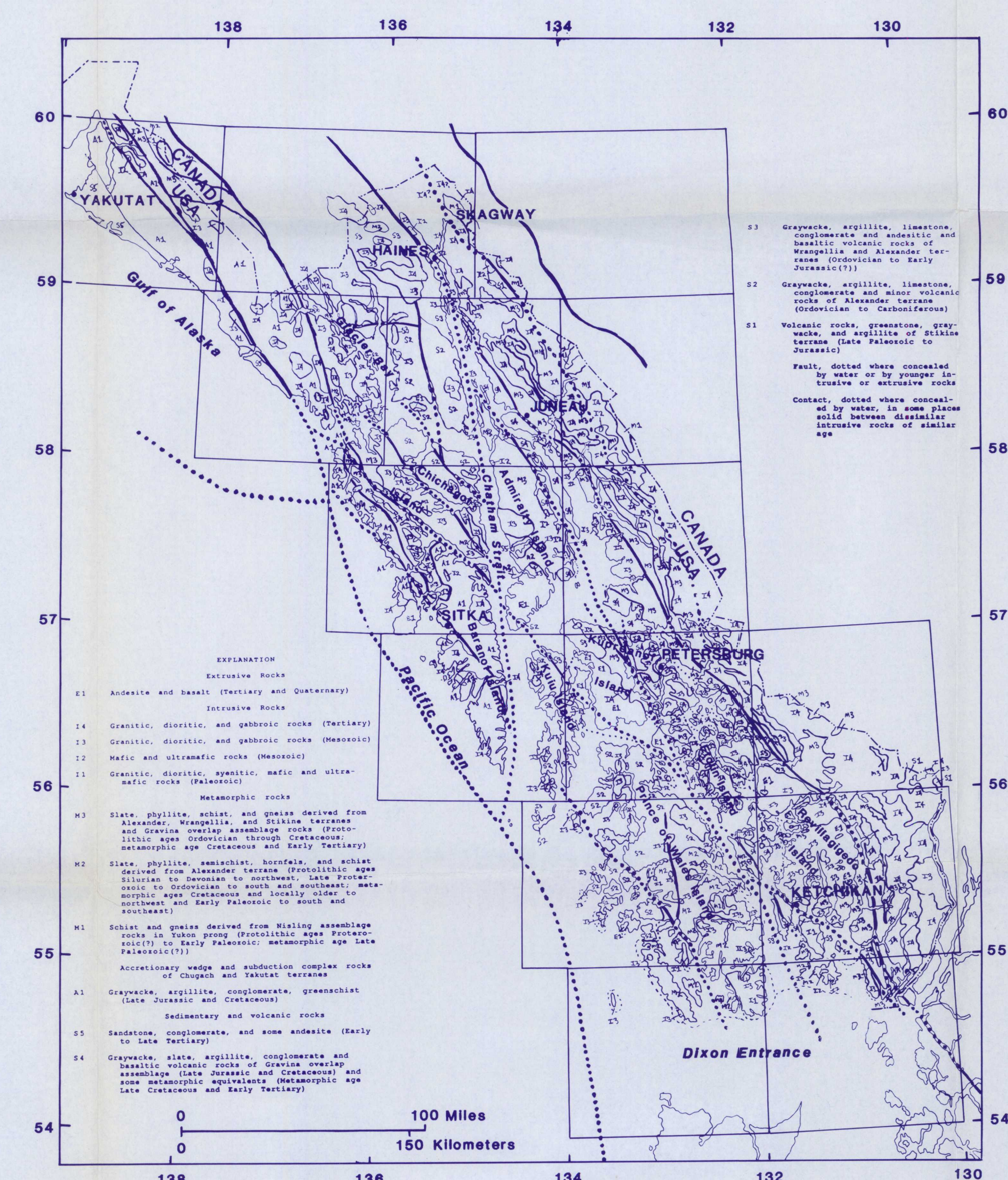


Figure 4. Generalized geologic map of southeastern Alaska. Compiled by D. A. Brew from sources given in figure 2 and from Beikman (1975). Quaternary units are not shown.

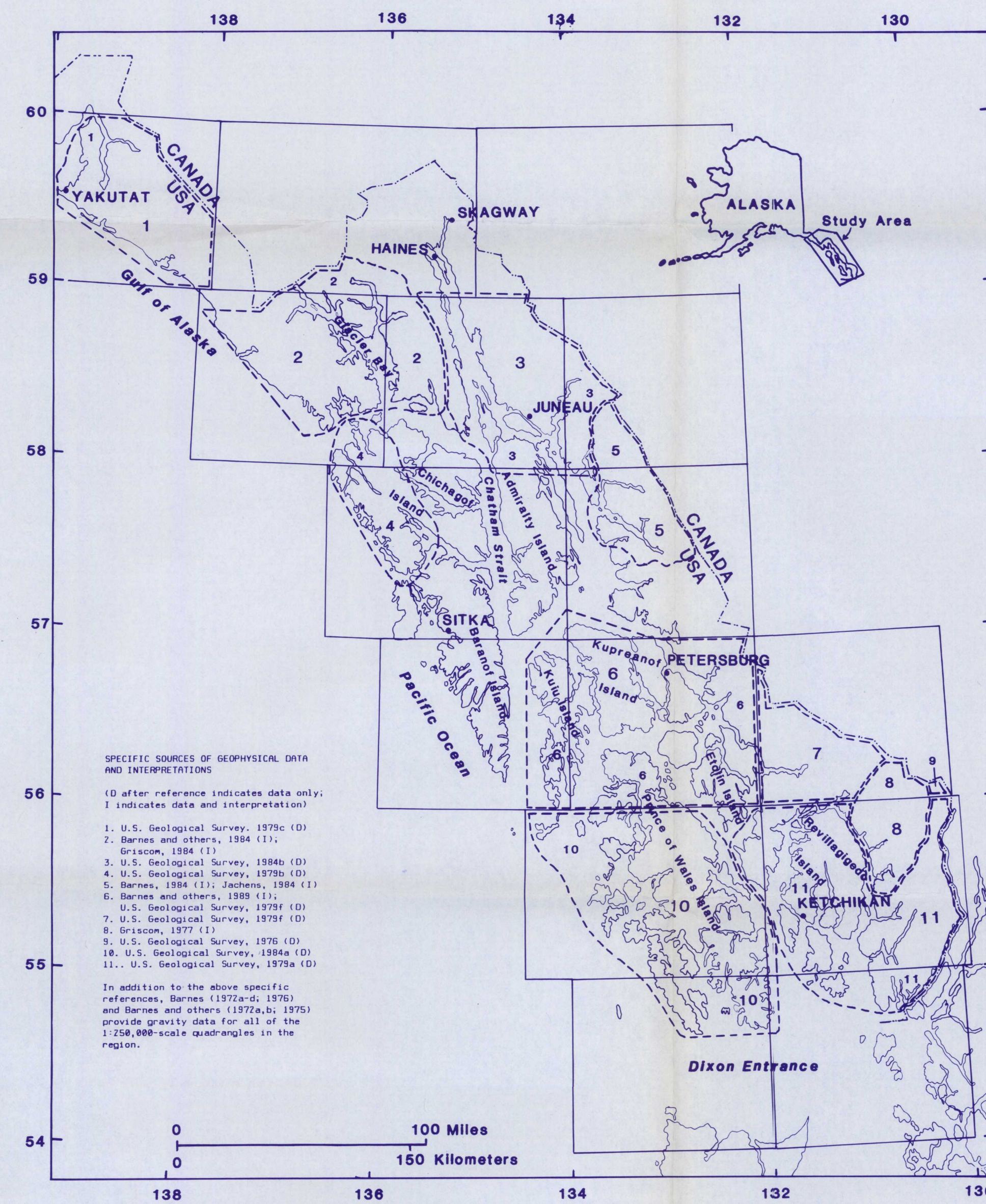


Figure 5. Map of southeastern Alaska, showing major sources of gravity and aeromagnetic information.



Figure 6. Map of southeastern Alaska, showing availability of different types of geochemical information.