

Figure 7. Map of southeastern Alaska, showing areas with previously completed mineral-resource assessments.

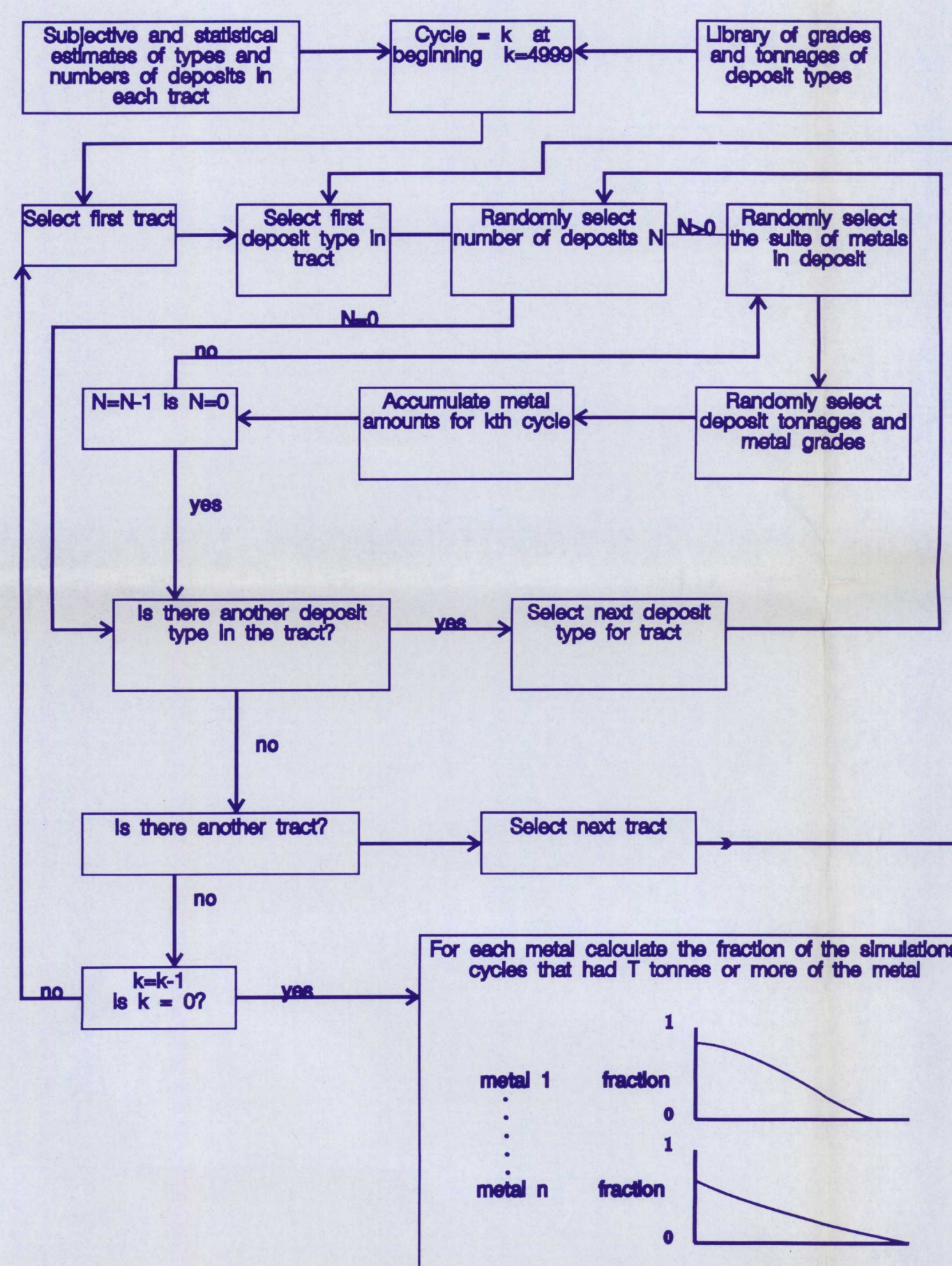


Figure 8. Flowchart for MARK3 simulator-- an estimator of undiscovered metal endowment. The input is the geologic assessment of the types and numbers of deposit in each of the tracts in the assessment region. The output is a distribution of the amounts of metal in the assessed deposits.

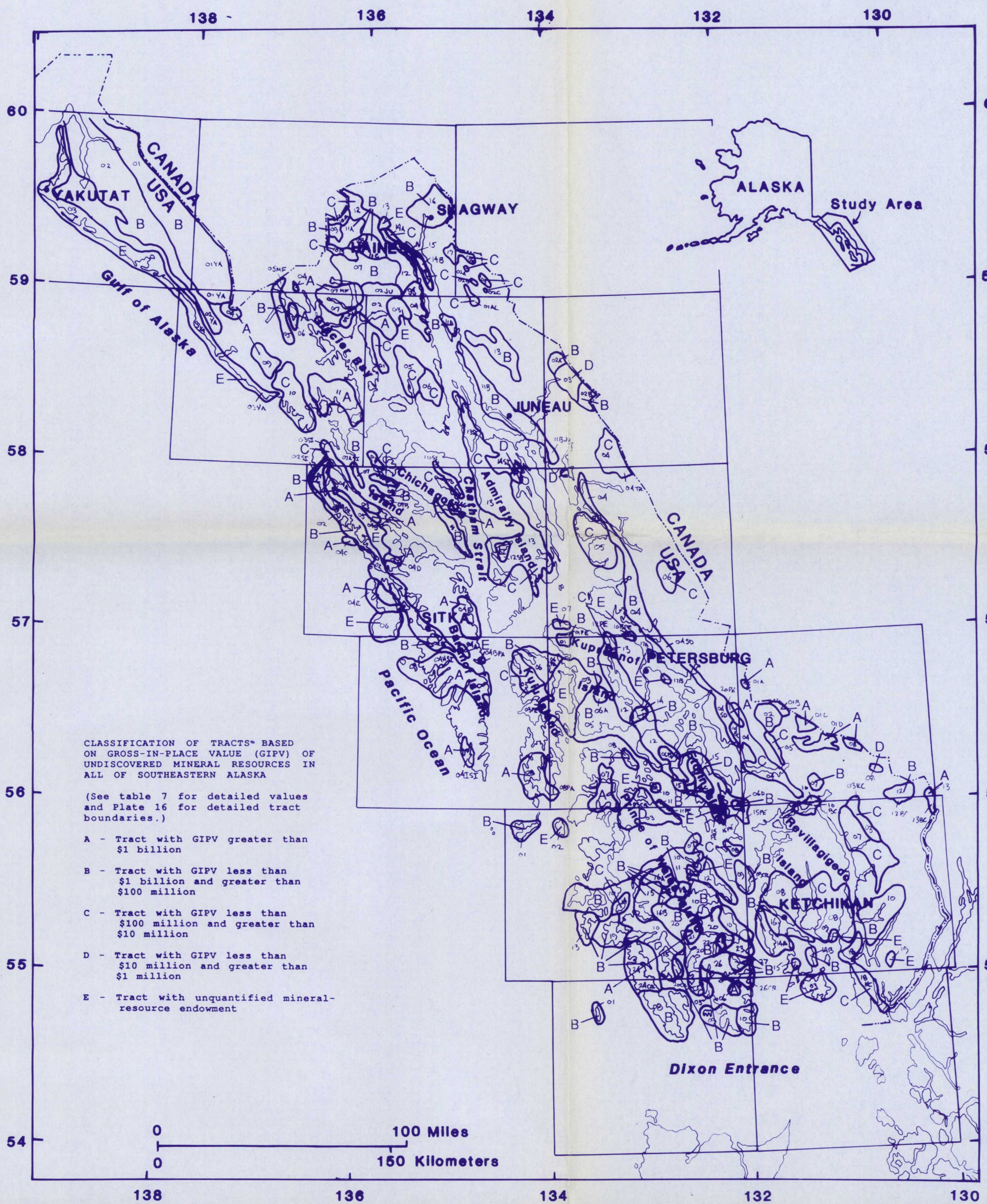


Figure 9. Map of southeastern Alaska, showing generalized location of individual mineral-resource tracts and the following categories of those assessment tracts in the whole region, based on gross-in-place value (GIPV) of probabilistically determined undiscovered mineral resources: (1) tracts with GIPV greater than \$1 billion, (2) tracts with GIPV less than \$1 billion and greater than \$100 million, (3) tracts with GIPV less than \$100 million and greater than \$10 million, (4) tracts with GIPV less than \$10 million and greater than \$1 million, and (5) tracts with unquantified mineral-resource endowment. (See plate 16 for exact boundaries of tracts and table 7 for GIPV; GIPV categories are based on the whole tract, even when it includes several subtracts; there are no adjustments in this illustration for the areas of the tracts; that is, these are not GIPV area categories.) Source of data is table 7 of this report.

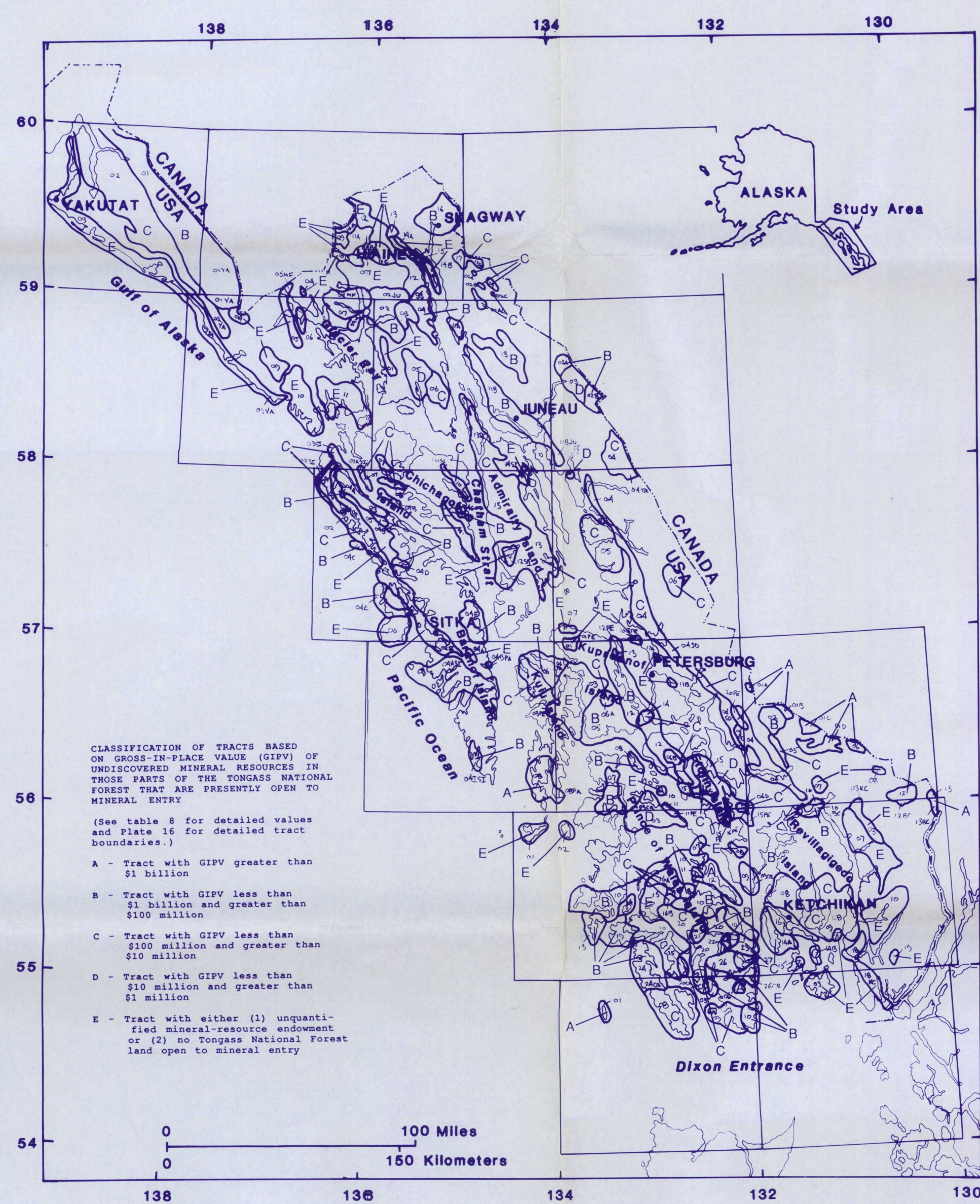


Figure 10. Map of southeastern Alaska, showing generalized location of individual mineral-resource tracts and the following categories of those assessment tracts that are wholly or partially on USFS lands now open to mineral entry, based on gross-in-place value (GIPV) of probabilistically determined undiscovered mineral resources: (1) tracts with GIPV greater than \$1 billion, (2) tracts with GIPV less than \$1 billion and greater than \$100 million, (3) tracts with GIPV less than \$100 million and greater than \$10 million, (4) tracts with GIPV less than \$10 million and greater than \$1 million, and (5) tracts with either (a) unquantified mineral-resource endowment or (b) no Tongass National Forest land open to mineral entry. (See plate 16 for exact boundaries of tracts and table 11 for GIPV; GIPV categories are based on the whole tract, even when it includes several subtracts; there are no adjustments in this illustration for the areas of the tracts; that is, these are not GIPV area categories.) Source of data is table 12 of this report.

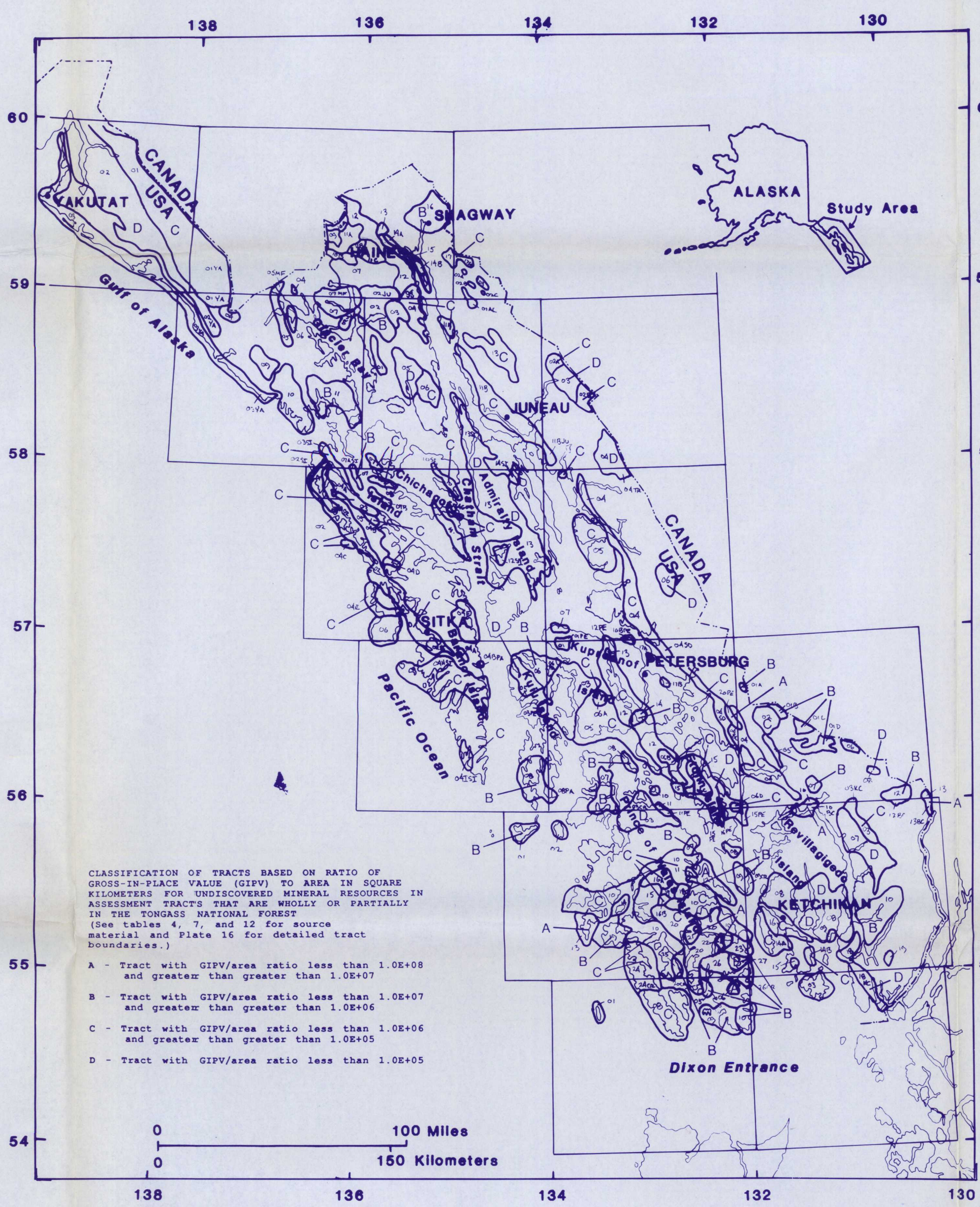


Figure 11. Map of southeastern Alaska, showing generalized location of individual mineral-resource tracts and the value per area categories for those assessment tracts that are wholly or partially in the Tongass National Forest, based on the ratio of gross-in-place value (GIPV) of probabilistically determined undiscovered mineral resources in a given tract to the area of the tract, in square kilometers: (1) tracts with GIPV/km² ratios less than 1.0E+08 and greater than 1.0E+07; (2) those with ratios less than 1.0E+07 and greater than 1.0E+06; (3) those with ratios less than 1.0E+06 and greater than 1.0E+05; and (4) those with ratios less than 1.0E+05. Sources of data are tables 4, 7 and 12 of this report.